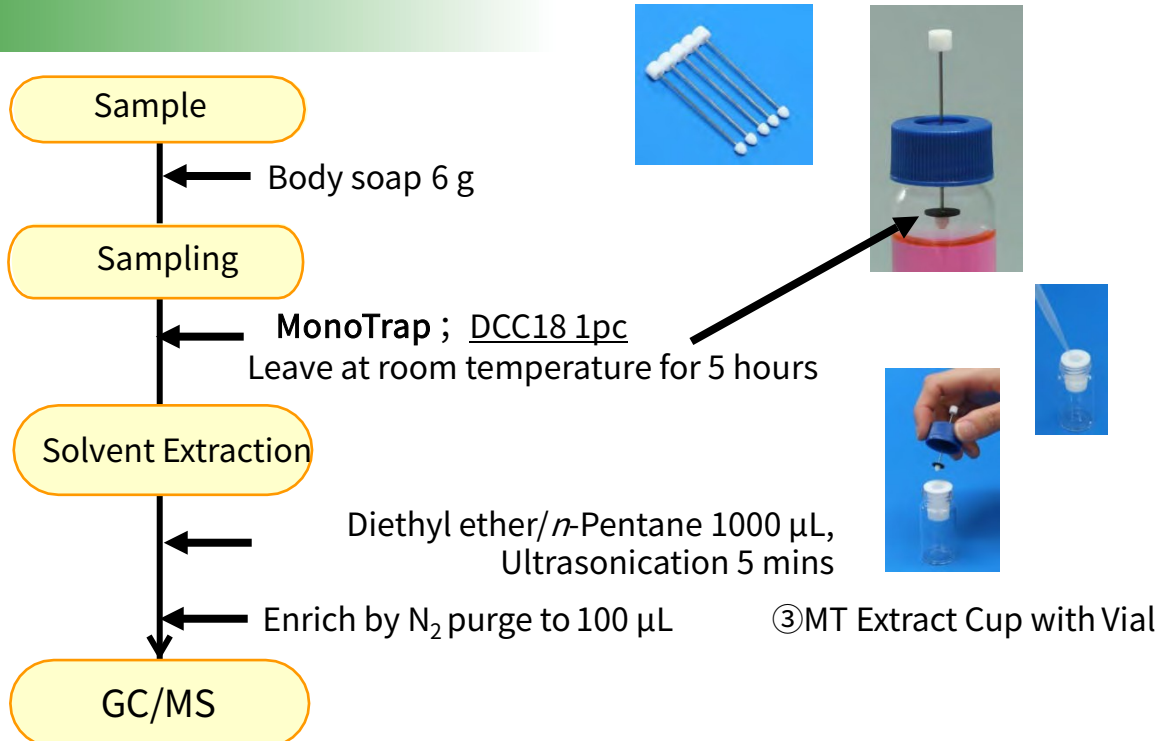


Easy Enrichment of Body Soap Fragrance Compounds with MonoTrap

MonoTrap is a hybrid novel adsorbent that combines a large surface area and the properties of silica gel, activated carbon, and ODSs. Due to the large surface area of porous silica and the adsorption effect caused by the inclusion of activated carbon, a high collection efficiency is obtained. Therefore, high-sensitivity analysis can be performed in a short time. In this study, we used MonoTrapDCC18 (with activated carbon) to perform simple enrichment analyses of the fragrance components of body soaps. The use of MT Holder allows easy collection of HS-gas. Due to the large surface area, high sensitivity of many information was obtained even in solvent extraction, where sample loading is large and dilution is a concern. The highly inert WAX-column InertCap Pure-WAX is the optimal column for fragrance components analyses. It is recommended to use this medicine in conjunction with MonoTrap.

Column : InertCap Pure-WAX (Cat.No. 1010-68142) 0.25 mm I.D.×30 m df=0.25 μm

Protocol



GC Condition

System : SHIMADZU GC-2010, GCMS-QP2010 Plus

Column : InertCap Pure-WAX (Cat.No. 1010-68142)
0.25 mm I.D.×30 m df=0.25 μm

Column Temp : 40 °C (5 min)→4 °C/min→250 °C (5 min)

Carrier Gas : He 120 kPa

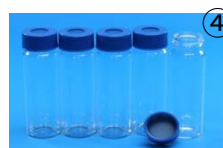
Injection : Splitless, 1 μL

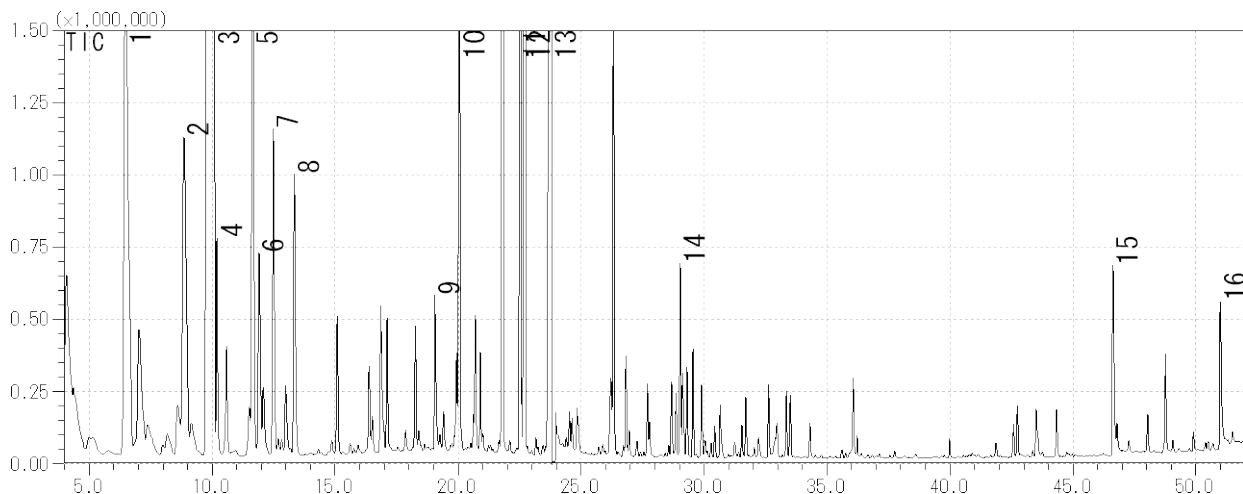
Detection : MS Scan (*m/z*,40-350)

Ultra inert WAX column **InertCap Pure-WAX** is highly recommended to analyze aromatic compounds together with **MonoTrap**

MonoTrap Convenient MonoTrap Start-UP-KIT

| | Description | Qty. |
|---|--|------|
| ① | MT Holder | 5 |
| ② | MT Stand | 1 |
| ③ | MT Extract Cup with Vial (20mL) | 5 |
| ④ | Clean Pin Hole Septum with vial (40mL) | 5 |
| ⑤ | 200μL Glass Insert (Flat Bottom) | 40 |
| ⑥ | MonoTrap DCC18 | 20 |
| ⑦ | MonoTrap RCC18 | 20 |
| ⑧ | MonoTrap DSC18 | 20 |
| ⑨ | MonoTrap RSC18 | 20 |





- | | |
|----------------------|-----------------------------------|
| 1 β -Pinene | 9 Acetic acid |
| 2 β -Myrcene | 10 Dihydromyrcenol |
| 3 D-Limonene | 11 β -Linalool |
| 4 Sabinen | 12 4-tert-Butylcyclohexyl acetate |
| 5 γ -Terpinen | 13 Propylene Glycol |
| 6 Styrene | 14 β -Citronellol |
| 7 p-Cymene | 15 Dodecanoic acid |
| 8 Octanal | 16 Tetradecanoic acid |

GL Sciences disclaims any and all responsibility for any injury or damage which may be caused by this data directly or indirectly. We reserve the right to amend this information or data at any time and without any prior announcement.

GL Sciences Inc. Japan

22-1 Nishishinjuku 6-chome
Shinjuku-ku, Tokyo
163-1130, Japan

Phone: +81-3-5323-6620
Fax: +81-3-5323-6621
Email: world@glsc.co.jp
Web: www.glsciences.com

GL Sciences Inc. USA

4733 Torrance Blvd. Suite 255
Torrance, CA 90503
USA

Phone: +1-310-265-4424
Fax: +1-310-265-4425
Email: info@glsciencesinc.com
Web: www.glsciencesinc.com

GL Sciences B.V.

Dillenburgstraat 7C
5652AM, Eindhoven
The Netherlands

Phone: +31-40-254-9531
Email: info@glsciences.eu
Web: www.glsciences.eu

GL Sciences (Shanghai) Limited

Tower B, Room 2003
Far East International Plaza
No.317 Xianxia Road, Changning District
Shanghai, China 200051

Phone: +86-21-62782272
Email: contact@glsciences.com.cn
Web: www.glsciences.com.cn



International Distributors

Visit our Website at www.glsciences.com/distributors