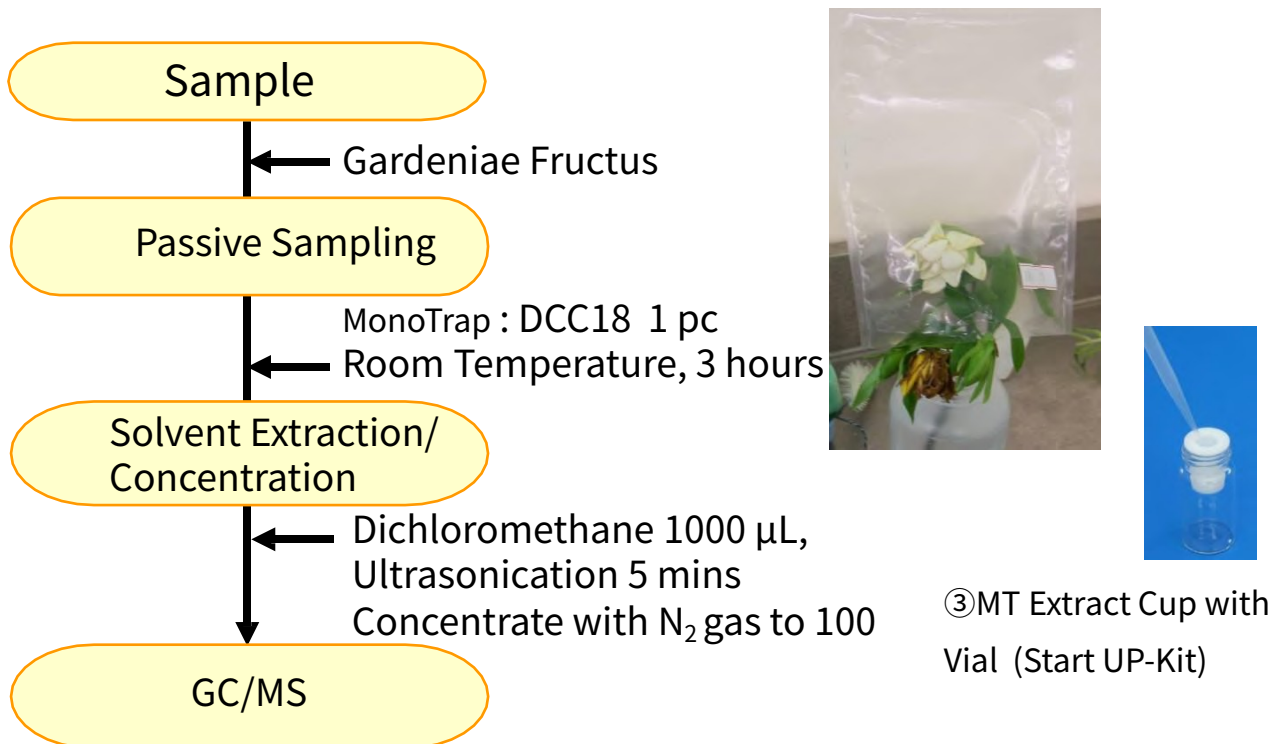


# Easy Enrichment of Gardeniae Fructus by Passive Sampling with MonoTrap

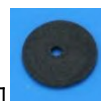
MonoTrap is a hybrid novel adsorbent that combines a large surface area and the properties of silica gel, activated carbon, and ODS. Due to the large surface area of porous silica and the adsorption effect caused by the inclusion of activated carbon, a high collection efficiency is obtained. Therefore, high-sensitivity analysis can be performed in a short time. This time, we used MonoTrap DCC18 (with activated carbon) to perform simple enrichment analyses of the flavor components of chinks. Passive sampling was performed by placing MonoTrap inside a sac-like teddleback. (Separately, please inquire about the dedicated teddleback.) The effects of activated carbon allowed us to successfully confirm Indole, a nitrogen-containing ingredient. The highly inert WAX-column InertCap Pure-WAX is the optimal column for fragrance components analyses. It is recommended to use this medicine in conjunction with MonoTrap.

## Protocol



## MonoTrap Series

Cat.No	Description	Shape	Size	Active Carbon	Functional Group
1050-72101	MonoTrap DCC18	Disk	O.D.10mm x thick 1mm	Yes	C18
1050-72201	MonoTrap RCC18	Rod	5 mm	Yes	C18
1050-71101	MonoTrap DSC18	Disk	O.D.10mm x thick 1mm	No	
1050-71201	MonoTrap RSC18	Rod	5mm	No	C18



DCC18



RCC18



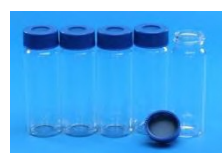
DSC18



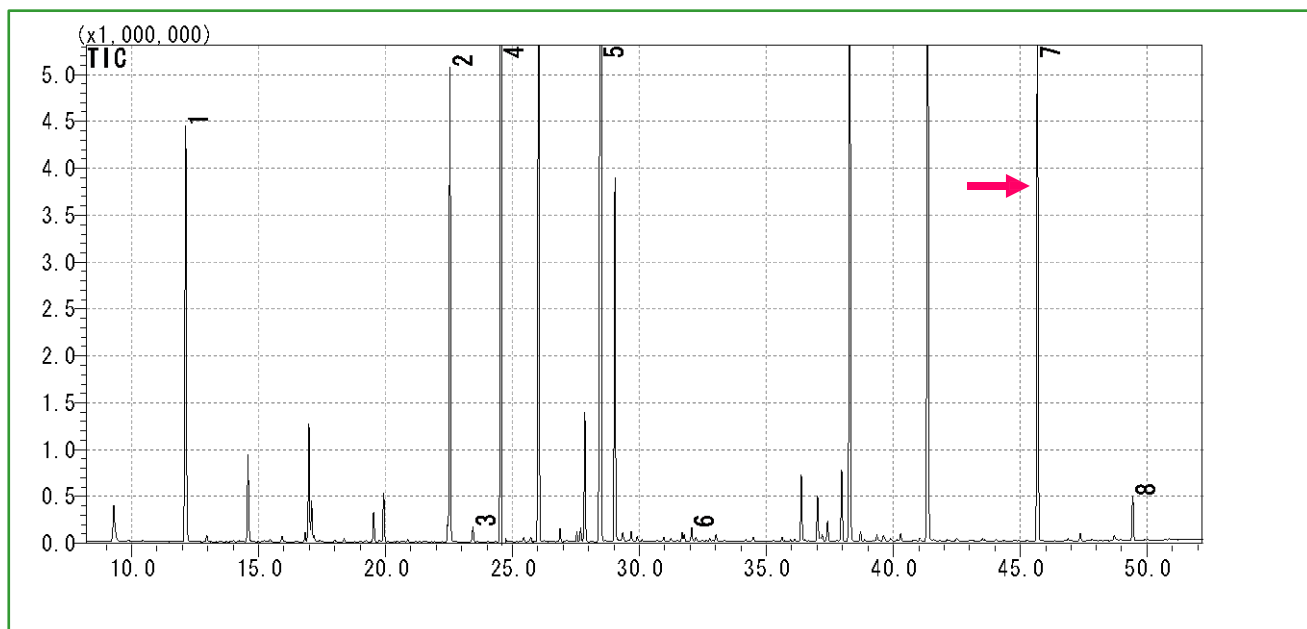
RSC18

## MonoTrap Convenient MonoTrap Start-UP-KIT

	Description	Qty.
①	MT Holder	5
②	MT Stand	1
③	MT Extract Cup with Vial (20 mL)	5
④	Clean Pin Hole Septum with vial (40 mL)	5
⑤	200 µ L Glass Insert (Flat Bottom)	40
⑥	MonoTrap DCC18	20
⑦	MonoTrap RCC18	20
⑧	MonoTrap DSC18	20
⑨	MonoTrap RSC18	20



⑤



- |                              |                       |
|------------------------------|-----------------------|
| 1 $\beta$ -cis-Ocimene       | 5 $\alpha$ -Farnesene |
| 2 $\beta$ -Linalool          | 6 Benzyl Alcohol      |
| 3 Caryophyllene              | 7 <b>Indole</b>       |
| 4 Benzoic acid, methyl ester | 8 Benzyl Benzoate     |

## GC

\*Identification result of standards

- Condition** : SHIMADZU GC-2010, GCMS-QP2010
- System** : **InertCap Pure-WAX** (Cat.No. 1010-68142)
- Column** : 0.25 mm I.D.  $\times$  30 m  $df=0.25 \mu\text{m}$
- Column Temp** : 40  $^{\circ}\text{C}$  (5min) $\rightarrow$ 4  $^{\circ}\text{C}/\text{min}$  $\rightarrow$ 250  $^{\circ}\text{C}$  (5 min)
- Carrier Gas** : He 120 kPa
- Injection** : Split/Split Less 0.5 min, 1  $\mu\text{L}$   
250  $^{\circ}\text{C}$
- Detection** : MS Scan ( $m/z$ : 40-350)

Ultra inert WAX column **InertCap Pure-WAX** is highly recommended to analyze aromatic compounds together with **MonoTrap**

GL Sciences disclaims any and all responsibility for any injury or damage which may be caused by this data directly or indirectly. We reserve the right to amend this information or data at any time and without any prior announcement.

### GL Sciences Inc. Japan

22-1 Nishishinjuku 6-chome  
Shinjuku-ku, Tokyo  
163-1130, Japan

Phone: +81-3-5323-6620  
Fax: +81-3-5323-6621  
Email: [world@glsc.co.jp](mailto:world@glsc.co.jp)  
Web: [www.glsciences.com](http://www.glsciences.com)

### GL Sciences Inc. USA

4733 Torrance Blvd. Suite 255  
Torrance, CA 90503  
USA

Phone: +1-310-265-4424  
Fax: +1-310-265-4425  
Email: [info@glsciencesinc.com](mailto:info@glsciencesinc.com)  
Web: [www.glsciencesinc.com](http://www.glsciencesinc.com)

### GL Sciences B.V.

Dillenburgstraat 7C  
5652AM, Eindhoven  
The Netherlands

Phone: +31-40-254-9531  
Email: [info@glsciences.eu](mailto:info@glsciences.eu)  
Web: [www.glsciences.eu](http://www.glsciences.eu)

### GL Sciences (Shanghai) Limited

Tower B, Room 2003  
Far East International Plaza  
No.317 Xianxia Road, Changning District  
Shanghai, China 200051

Phone: +86-21-62782272  
Email: [contact@glsciences.com.cn](mailto:contact@glsciences.com.cn)  
Web: [www.glsciences.com.cn](http://www.glsciences.com.cn)



International Distributors

Visit our Website at [www.glsciences.com/distributors](http://www.glsciences.com/distributors)