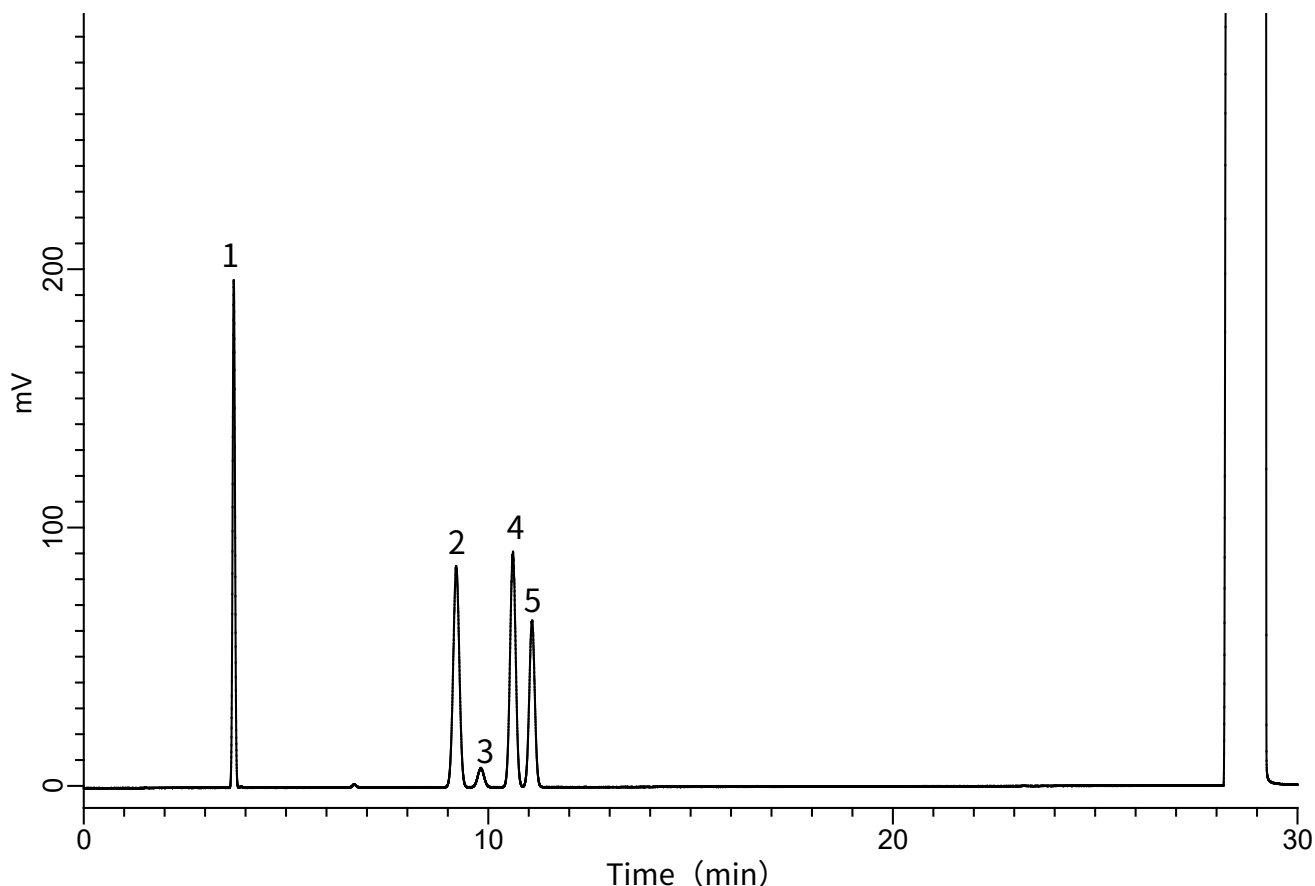


# InertSearch for GC

InertCap Applications

## Residual solvents in pharmaceuticals (JP18 Standard stock solution Class 1)

Data No. GA \*\*\*-0155



### Conditions

**System** : GC4000 Plus-FID  
**Column** : InertCap 624MS  
0.32 mm I.D. × 30 m df = 1.80 μm  
**Col. Cat. No.** : 1010-64747  
**Col. Temp.** : 40 °C(20 min) - 10 °C/min  
- 240 °C(20 min)  
**Carrier Gas** : He 2.20 mL/min (35cm/sec)  
**Injection** : Split 20:1  
250 °C  
**Detection** : FID Auto Range  
250 °C  
**Sample Size** : 1.0 μL  
Analyte in Dimethyl sulfoxide

### Analyte (R.T. min)

1. 1,1-Dichloroethene	(3.707)
2. 1,1,1-Trichloroethane	(9.202)
3. Carbon tetrachloride	(9.817)
4. Benzene	(10.609)
5. 1,2-Dichloroethane	(11.083)