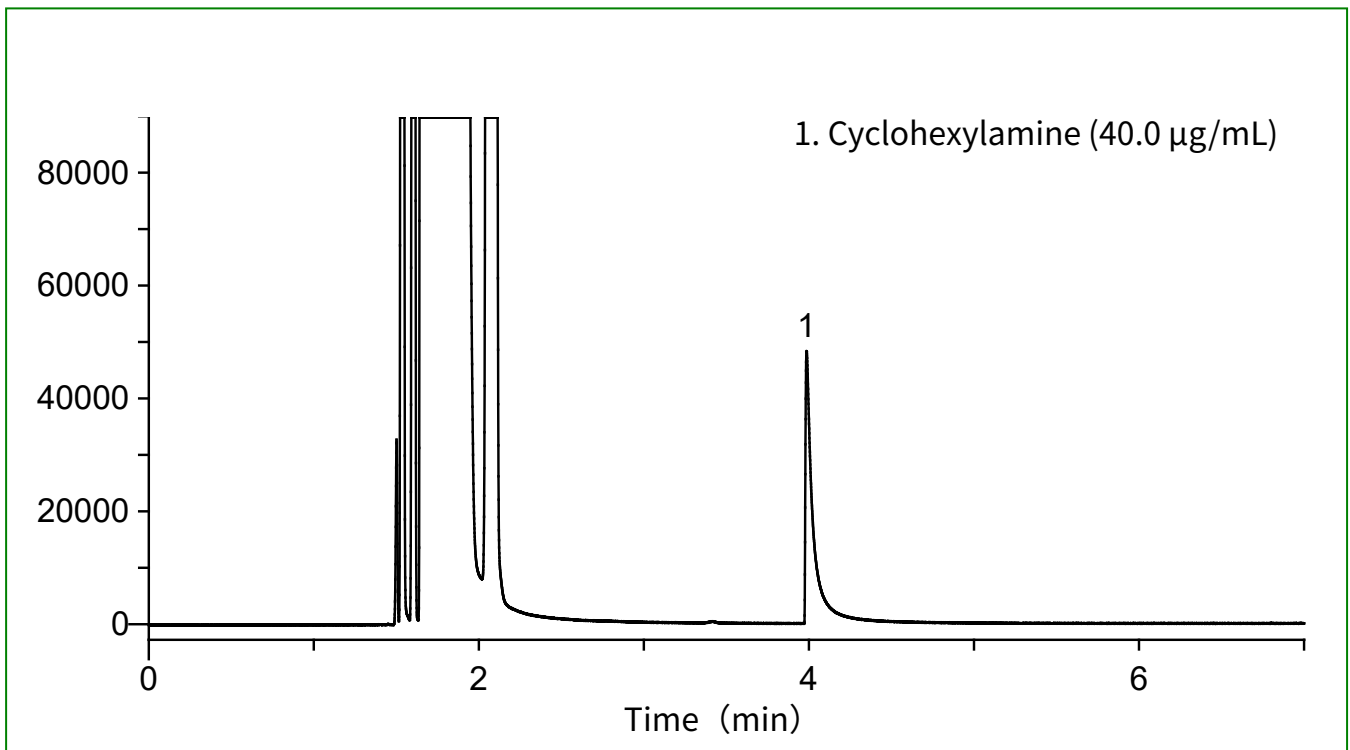


Acetohexamide is used to lower blood sugar levels and is used to treat diabetes.

In this study, cyclohexylamine, a related substance, was analyzed as a purity test of acetohexamide.

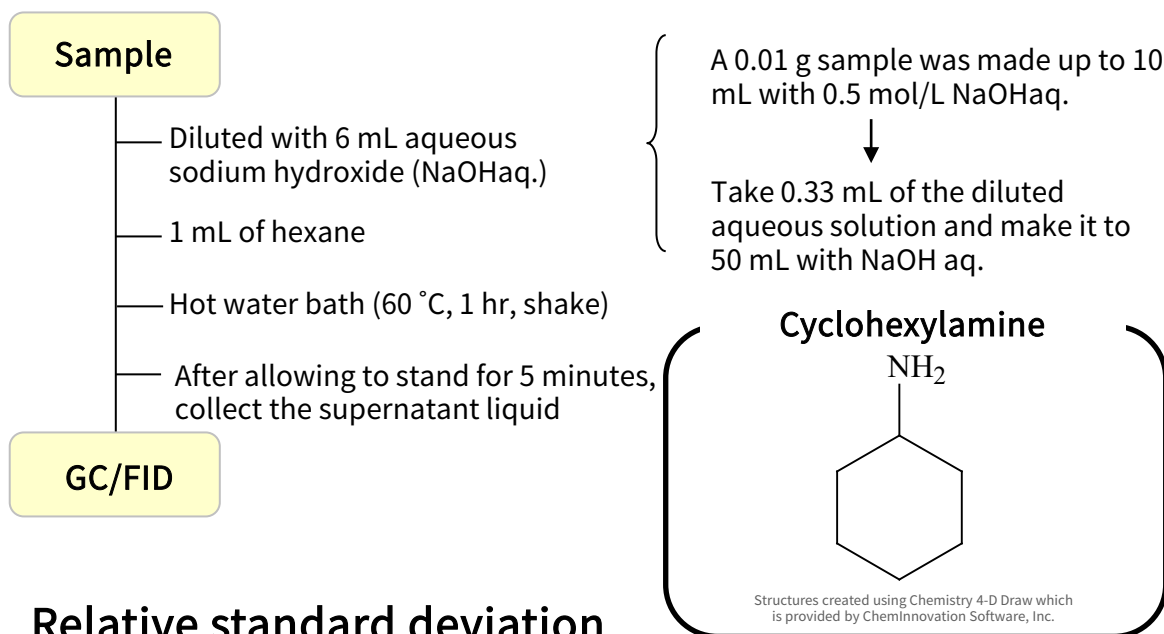
The relative standard deviation of peak area and number of theoretical plates for cyclohexylamine was confirmed, and excellent results were obtained.

## Example: Measurement of standard



## Conditions

System	: GC - FID
Column	: InertCap 1 0.53 mm I.D. x 30 m df = 1.50 µm
Col. Temp.	: 90 °C
Carrier Gas	: He 35 kPa
Injection	: Split flow 17 mL/min 150 °C
Detection	: FID Range 10 <sup>0</sup> 210 °C
Sample Size	: 2.0 µL

Example: Pretreatment of standardRelative standard deviationRepeatability of peak area and number of theoretical plates ( $n = 6$ )

	Peak areas	Number of theoretical plates
First	134640	72096
Second	136256	70487
Third	139140	70750
Fourth	137031	70589
Fifth	135420	70593
Sixth	136488	69826
Mean	136496	70724
SD	1545	746
RSD (%)	1.13	1.05

GL Sciences disclaims any and all responsibility for any injury or damage which may be caused by this data directly or indirectly. We reserve the right to amend this information or data at any time and without any prior announcement.

**GL Sciences Inc. Japan**

22-1 Nishishinjuku 6-chome  
Shinjuku-ku, Tokyo  
163-1130, Japan

Phone: +81-3-5323-6620  
Fax: +81-3-5323-6621  
Email: [world@glsc.co.jp](mailto:world@glsc.co.jp)  
Web: [www.glsciences.com](http://www.glsciences.com)

**GL Sciences Inc. USA**

4733 Torrance Blvd. Suite 255  
Torrance, CA 90503  
USA

Phone: +1-310-265-4424  
Fax: +1-310-265-4425  
Email: [info@glsciencesinc.com](mailto:info@glsciencesinc.com)  
Web: [www.glsciencesinc.com](http://www.glsciencesinc.com)

**GL Sciences B.V.**

Dillenburgstraat 7C  
5652AM, Eindhoven  
The Netherlands

Phone: +31-40-254-9531  
Email: [info@glsciences.eu](mailto:info@glsciences.eu)  
Web: [www.glsciences.eu](http://www.glsciences.eu)

**GL Sciences (Shanghai) Limited**

Tower B, Room 2003  
Far East International Plaza  
No.317 Xianxia Road, Changning District  
Shanghai, China 200051

Phone: +86-21-62782272  
Email: [contact@glsciences.com.cn](mailto:contact@glsciences.com.cn)  
Web: [www.glsciences.com.cn](http://www.glsciences.com.cn)