

Analysis of Cherry Blossoms Fragrance - using MonoTrap

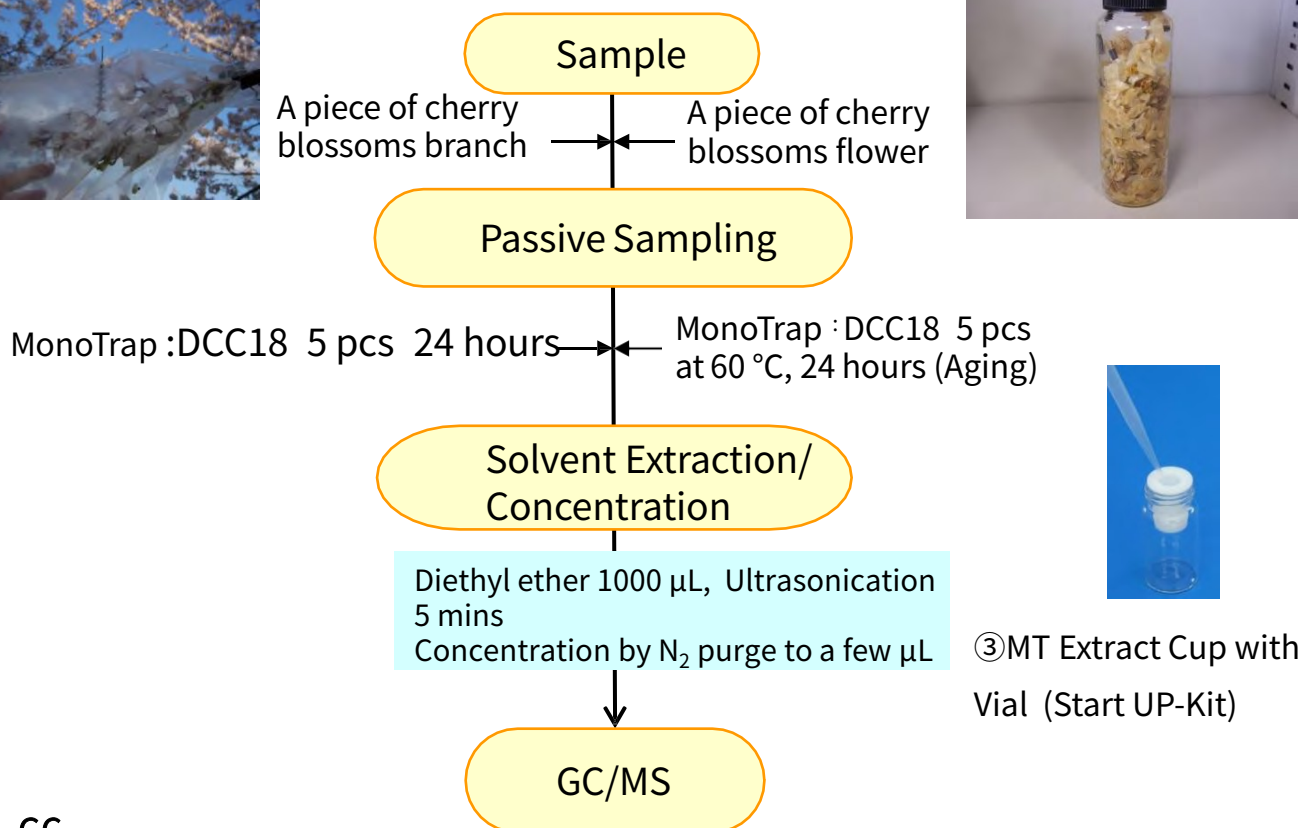
MonoTrap is a hybrid novel adsorbent that combines a large surface area and the properties of silica gel, activated carbon, and ODS. Due to the large surface area of porous silica and the adsorption effect caused by the inclusion of activated carbon, a high collection efficiency is obtained. Therefore, high-sensitivity analysis can be performed in a short time. In the case of flowers or the like, the fragrance component changes over time (ripening). To analyze this change in a simple method, we used MonoTrap DCC18 (with activated carbon) to perform simple enrichment analyses of the fragrance components of cherry flowers and cherry flowers ripened by prolonged warming to track the changes in the fragrance components. Using MonoTrap DCC18, we identified Coumarine and others that were not identified in live flowers by ripening. This Coumarine is an aroma produced by salting and ripening cherry flowers. It is actually used to scent Japanese food cherry rice cake.

Protocol

Cherry Blossoms



Aging



GC

Condition : SHIMADZU GC-2010, GCMS-QP2010

System : **InertCap Pure-WAX** (Cat.No. 1010-68142)

Column : 0.25 mm I.D. × 30 m df=0.25 µm

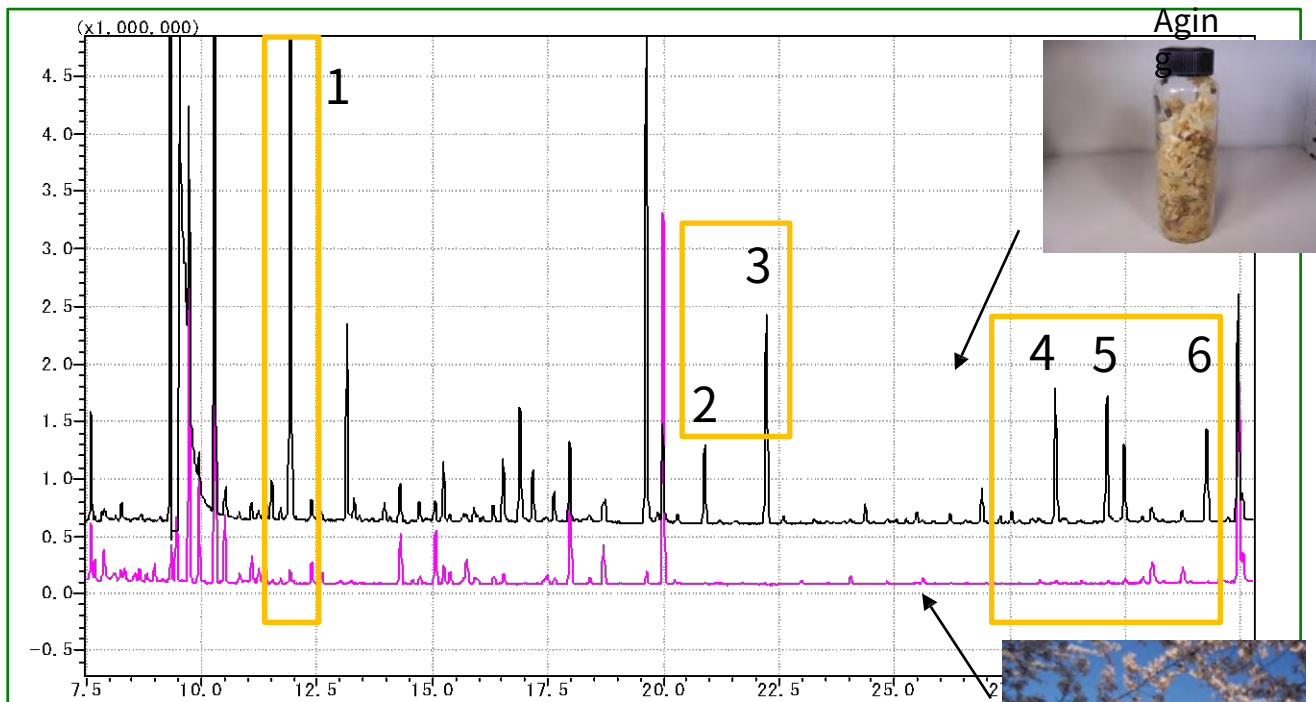
Column Temp : 40 °C (5min) → 4 °C/min → 180 °C → 20 °C/min → 250 °C (5 min)

Carrier Gas : He 120 kPa

Injection : Split 1:10, 1 µL

Detection : MS Scan (*m/z*: 40-350)

Ultra inert WAX column **InertCap Pure-WAX** is highly recommended to analyze aromatic compounds together with **MonoTrap**



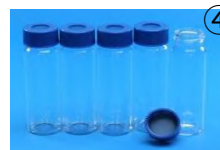
- 1 Clorius
 - 2 2,6-Dimethyl-3,7-octadiene-2,6-diol
 - 3 p-Anisaldehyde
 - 4 3,5-Dimethoxybenzaldehyde
 - 5 8-Hydroxylinalool
 - 6 Coumarine
- Red • identification result of standards



Sample

MonoTrap Convenient MonoTrap Start-UP-KIT

	Description	Qty.
①	MT Holder	5
②	MT Stand	1
③	MT Extract Cup with Vial (20 mL)	5
④	Clean Pin Hole Septum with vial (40 mL)	5
⑤	200µ L Glass Insert (Flat Bottom)	40
⑥	MonoTrap DCC18	20
⑦	MonoTrap RCC18	20
⑧	MonoTrap DSC18	20
⑨	MonoTrap RSC18	20



GL Sciences disclaims any and all responsibility for any injury or damage which may be caused by this data directly or indirectly. We reserve the right to amend this information or data at any time and without any prior announcement.

GL Sciences Inc. Japan

22-1 Nishishinjuku 6-chome
Shinjuku-ku, Tokyo
163-1130, Japan

Phone: +81-3-5323-6620
Fax: +81-3-5323-6621
Email: world@glsc.co.jp
Web: www.glsciences.com

GL Sciences Inc. USA

4733 Torrance Blvd. Suite 255
Torrance, CA 90503
USA

Phone: +1-310-265-4424
Fax: +1-310-265-4425
Email: info@glsciencesinc.com
Web: www.glsciencesinc.com

GL Sciences B.V.

Dillenburgstraat 7C
5652AM, Eindhoven
The Netherlands

Phone: +31-40-254-9531
Email: info@glsciences.eu
Web: www.glsciences.eu

GL Sciences (Shanghai) Limited

Tower B, Room 2003
Far East International Plaza
No.317 Xianxia Road, Changning District
Shanghai, China 200051

Phone: +86-21-62782272
Email: contact@glsciences.com.cn
Web: www.glsciences.com.cn



International Distributors

Visit our Website at www.glsciences.com/distributors