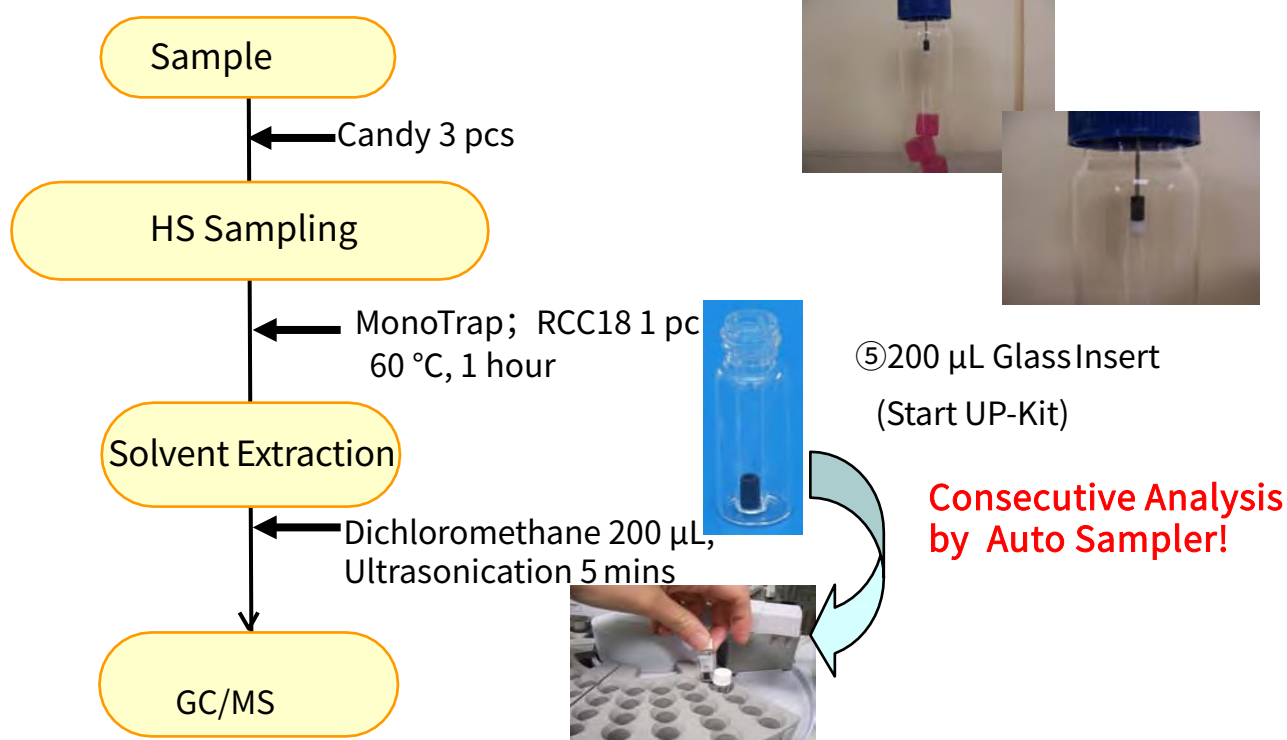


Easy Enrichment of Candy Fragrance by HS Method with MonoTrap

MonoTrap is a hybrid novel adsorbent that combines a large surface area and the properties of silica gel, activated carbon, and ODS. Due to the large surface area of porous silica and the adsorption effect caused by the inclusion of activated carbon, a high collection efficiency is obtained. Therefore, high-sensitivity analysis can be performed in a short time. In this study, MonoTrap RCC18 (with activated carbon) was used to perform simple enrichment analyses of the flavor components of candy by the HS-method. They were extracted with an insert vial for a commercial autosampler and subjected to continuous analysis as such. It is easy to screen without the need for dedicated MT Extract Cup or replacement of the extract. The highly inert WAX-column InertCap Pure-WAX is the optimal column for fragrance components analyses. It is recommended to use this medicine in conjunction with MonoTrap.

Protocol



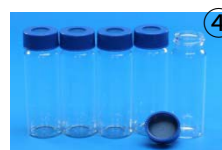
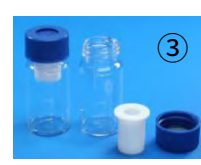
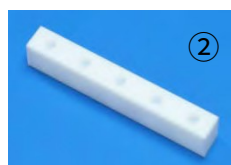
RCC18 and RSC18 can be used with existing auto sampler inert vials to elute without using the MT Extract Cup.

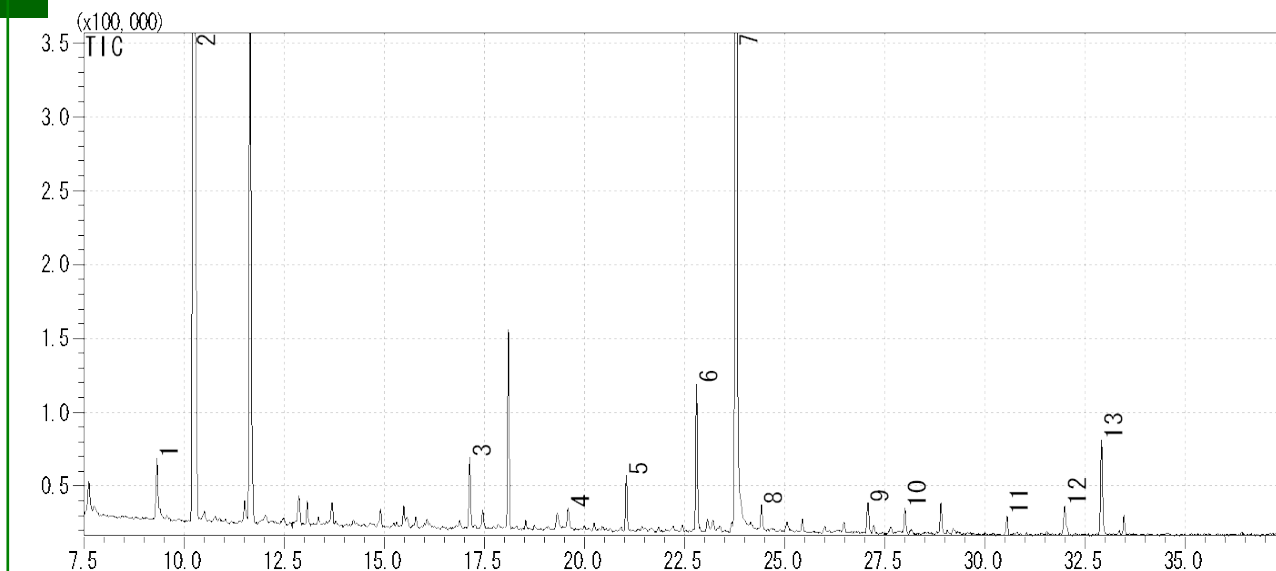
For example, with Shimadzu AOC20i+S, the combination of Shimadzu 12×32 mm standard screw vial (8-425) (GLS Cat.1030-17105) and ⑤ 200 µL glass insert can be used for a consecutive analysis as shown in the picture above, and it offers an easy operation from sampling to measurement.

In order to avoid the contact of MonoTrap and a micro syringe, make sure to program that the deepest spot that the needle of micro syringe reaches is at least 6mm from the bottom of the vial.

MonoTrap Convenient MonoTrap Start-UP-KIT

	Description	Qty.
①	MT Holder	5
②	MT Stand	1
③	MT Extract Cup with Vial (20 mL)	5
④	Clean Pin Hole Septum with vial (40 mL)	5
⑤	200µL Glass Insert (Flat Bottom)	40
⑥	MonoTrap DCC18	20
⑦	MonoTrap RCC18	20
⑧	MonoTrap DSC18	20
⑨	MonoTrap RSC18	20





- | | |
|---------------------|--------------------------|
| 1 β-Myrcene | 8 Ethyl laevulinate |
| 2 Limonene | 9 α-Terpineol |
| 3 cis-3-Hexenol | 10 Citral |
| 4 Furfural | 11 β-Damascenone |
| 5 Decanal | 12 Benzyl Alcohol |
| 6 β-Linalool | 13 Phenylethyl Alcohol |
| 7 Propylene Glycol | |
- Red ... Identification result of Standards

GC Condition

System : SHIMADZU GC-2010、GCMS-QP2010 ,AOC20i+S

Column : **InertCap Pure-WAX**(Cat.1010-68142) 0.25 mm
I.D.×30 m df=0.25 μm

Column Temp : 40 °C (5 min)→6°C/min→250 °C (5 min)

Carrier Gas : He 95 kPa

Injection : Split /Splitless,1 μL 250 °C

Detection : MS Scan (*m/z*: 55-400)

Ultra inert WAX column **InertCap Pure-WAX** is highly recommended to analyze aromatic compounds together with **MonoTrap**

GL Sciences disclaims any and all responsibility for any injury or damage which may be caused by this data directly or indirectly. We reserve the right to amend this information or data at any time and without any prior announcement.

GL Sciences Inc. Japan

22-1 Nishishinjuku 6-chome
Shinjuku-ku, Tokyo
163-1130, Japan

Phone: +81-3-5323-6620
Fax: +81-3-5323-6621
Email: world@glsc.co.jp
Web: www.glsciences.com

GL Sciences Inc. USA

4733 Torrance Blvd. Suite 255
Torrance, CA 90503
USA

Phone: +1-310-265-4424
Fax: +1-310-265-4425
Email: info@glsciencesinc.com
Web: www.glsciencesinc.com

GL Sciences B.V.

Dillenburgstraat 7C
5652AM, Eindhoven
The Netherlands

Phone: +31-40-254-9531
Email: info@glsciences.eu
Web: www.glsciences.eu

GL Sciences (Shanghai) Limited

Tower B, Room 2003
Far East International Plaza
No.317 Xianxia Road, Changning District
Shanghai, China 200051

Phone: +86-21-62782272
Email: contact@glsciences.com.cn
Web: www.glsciences.com.cn



International Distributors

Visit our Website at www.glsciences.com/distributors