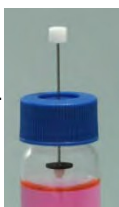
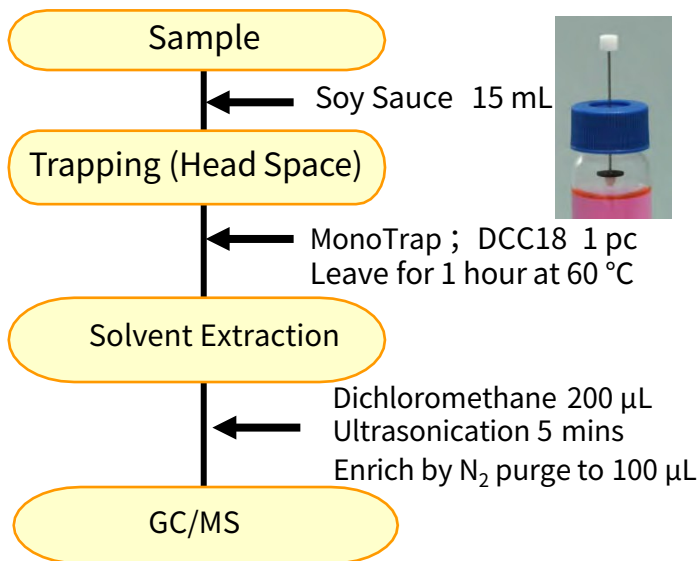


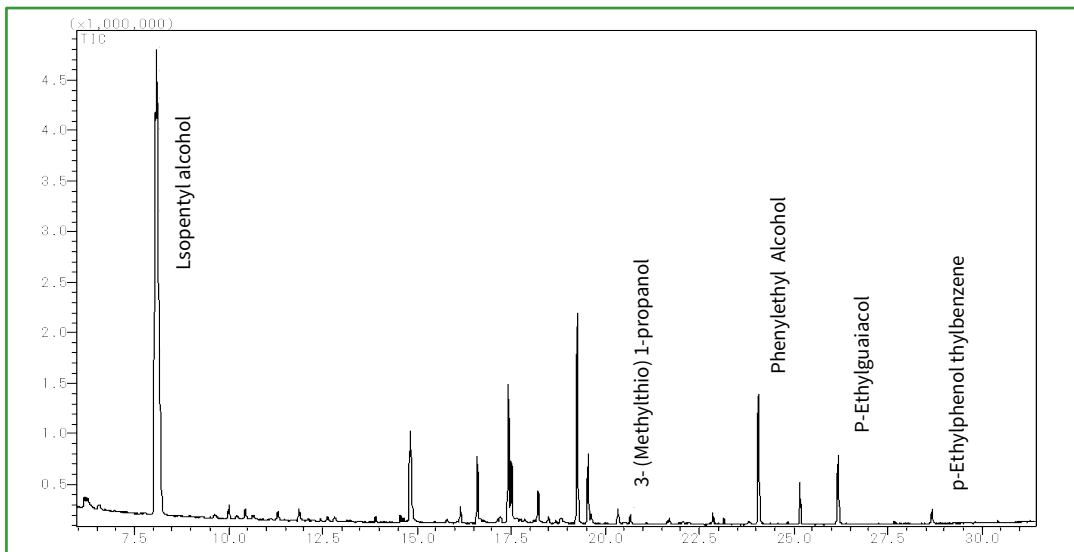
MonoTrap is a hybrid novel adsorbent that combines a large surface area and the properties of silica gel, activated carbon, and ODS. Utilizing the surface of porous silica, it can be used as a tool that makes use of the large surface area and the adsorbent effect caused by the inclusion of activated carbon for high collection efficiency and for short time and sensitive analysis. In this study, we used MonoTrap DCC18 (with activated carbon) to perform simple enrichment analyses of two fragrance components in different production areas (conditions). It is low-cost per unit and requires no conditioning before use, so multiple samples can be easily collected. The highly inert WAX-column InertCap Pure-WAX is the optimal column for fragrance components analyses. It is recommended to use this medicine in conjunction with MonoTrap.

Protocol



GC/MS Condition

System	: SHIMADZU GC-2010, GCMS-QP2010
Column	: InertCap Pure-WAX (Cat.No.1010-68142) 0.25 mm I.D.×30 m df=0.25 µm
Column Temp	: 50 °C (5 min)→6 °C/min→250 °C (5 min)
Carrier Gas	: He 90 kPa
Injection	: Splitless, 1 µL 250 °C
Detection	: MS Scan (<i>m/z</i> ,35-450)



GL Sciences disclaims any and all responsibility for any injury or damage which may be caused by this data directly or indirectly. We reserve the right to amend this information or data at any time and without any prior announcement.

GL Sciences Inc. Japan

22-1 Nishishinjuku 6-chome
Shinjuku-ku, Tokyo
163-1130, Japan

Phone: +81-3-5323-6620
Fax: +81-3-5323-6621
Email: world@glsc.co.jp
Web: www.glsciences.com

GL Sciences Inc. USA

4733 Torrance Blvd. Suite 255
Torrance, CA 90503
USA

Phone: +1-310-265-4424
Fax: +1-310-265-4425
Email: info@glsciencesinc.com
Web: www.glsciencesinc.com

GL Sciences B.V.

Dillenburgstraat 7C
5652AM, Eindhoven
The Netherlands

Phone: +31-40-254-95.eu
Web: www.glsciences.eu

GL Sciences (Shanghai) Limited

Tower B, Room 2003
Far East International Plaza
No.317 Xianxia Road, Changning District
Shanghai, China 200051

Phone: +86-21-62782272
Email: contact@glsciences.com.cn
Web: www.glsciences.com.cn



International Distributors

Visit our Website at www.glsciences.com/distributors