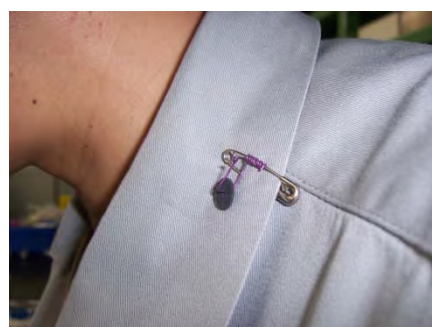
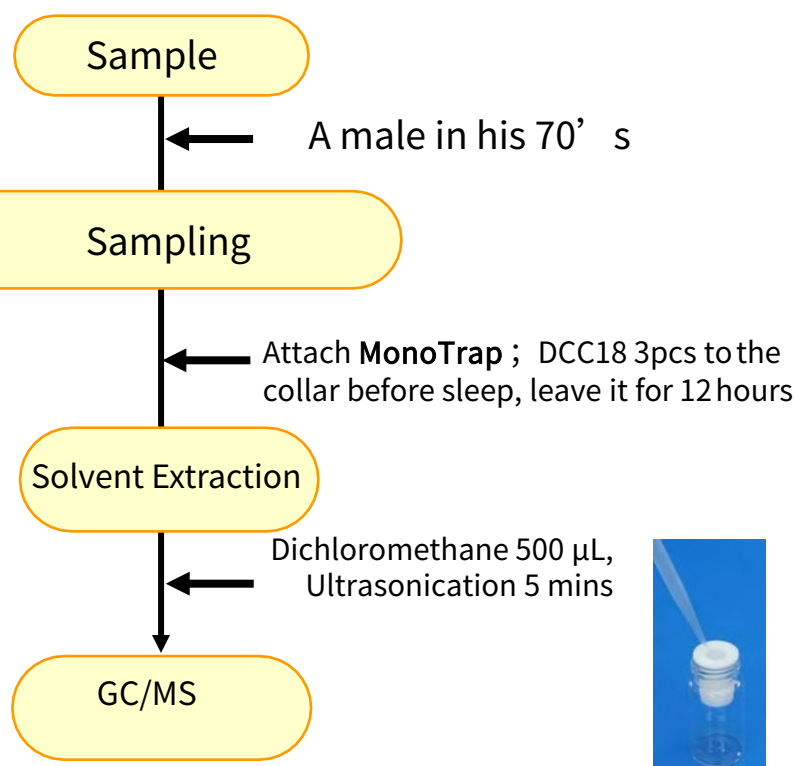


MonoTrap is a hybrid novel adsorbent that combines a large surface area and the properties of silica gel, activated carbon, and ODS. Due to the large surface area of porous silica and the adsorption effect caused by the inclusion of activated carbon, a high collection efficiency is obtained. Therefore, high-sensitivity analysis can be performed in a short time. In this study, we used MonoTrap DCC18 (with activated carbon) to perform simple enrichment analyses of aging odors in men in their 70s. At bedtime, enrichment analysis can be easily performed by simply attaching it to the collar. We were able to identify trans-2-Nonenal, an odorous ingredient of aging. We were also able to confirm that the ingredients of the paint applied by the subjects at bedtime were also collected. Due to the large surface area of MonoTrap, a large amount of information was obtained with high sensitivity, even in solvent-extraction, where sample loading is large and dilutions are of concern. The highly inert WAX-column InertCap Pure-WAX is the optimal column for fragrance components analyses. It is recommended to use this medicine in conjunction with MonoTrap.

Protocol



Ref) How to attach MonoTrap



Ultra inert WAX column **InertCap Pure-WAX** is highly recommended to analyze aromatic compounds together with **MonoTrap**

MonoTrap Series

Cat.No	Description	Shape	Size	Active Carbon	Functional Group
1050-72101	MonoTrap DCC18	Disk	O.D.10mmx thick 1mm	Yes	C18
1050-72201	MonoTrap RCC18	Rod	5mm	Yes	C18
1050-71101	MonoTrap DSC18	Disk	O.D.10mmx thick 1mm	No	C18
1050-71201	MonoTrap RSC18	Rod	5mm	No	C18



DCC18



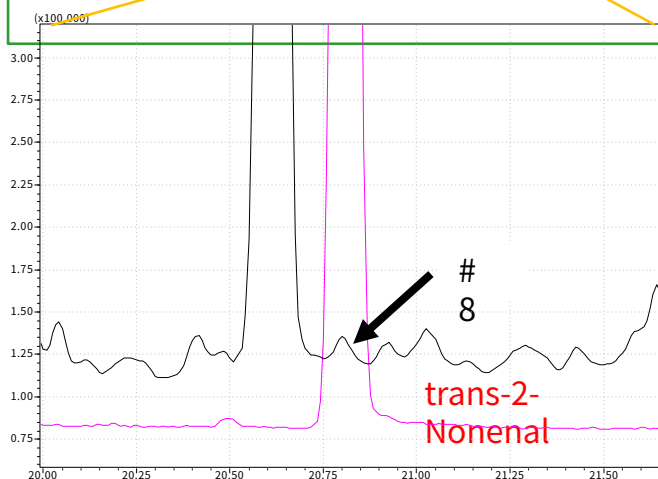
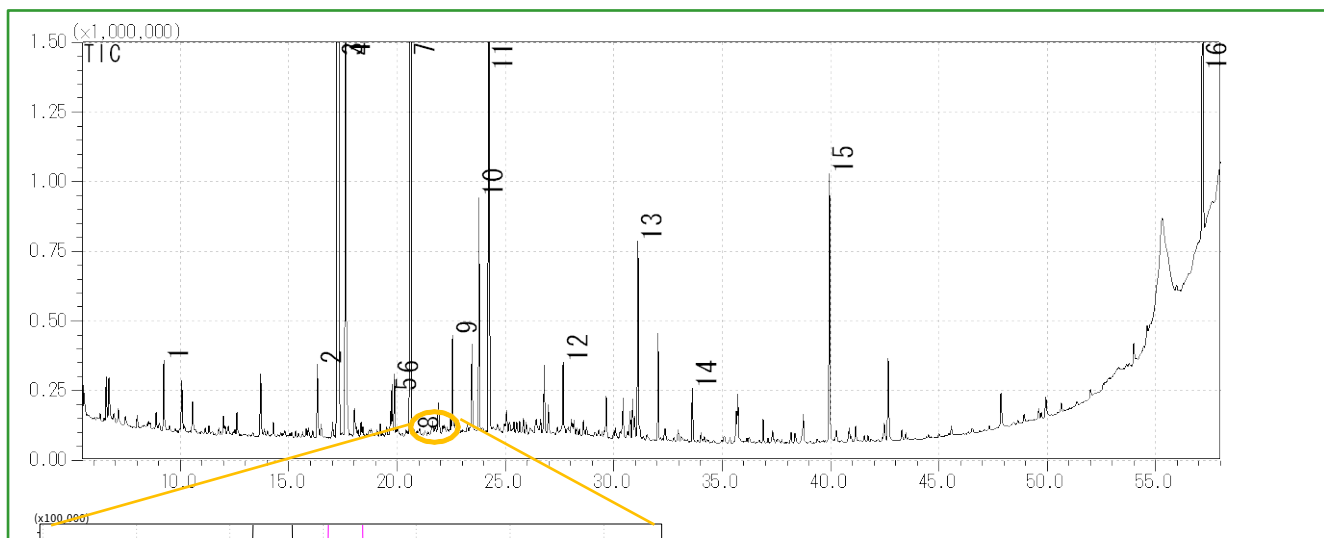
RCC18



DSC18



RSC18



GC Condition S

System : SHIMADZU GC-2010, GCMS-QP2010Plus
Column : InertCap Pure-WAX (Cat.No. 1010-68142)
 0.25 mm I.D. × 30 m df=0.25 μm
Column Temp : 40 °C (5 min) → 4 °C/min → 250 °C (5 min)
Carrier Gas : He 120 kPa
Injection : Splitless, 1 μL
Detection : MS Scan (*m/z*, 20-350)

- | | |
|---------------------|--|
| 1 D-Limonene | 9 Propylene Glycol |
| 2 Nonanal | 10 Heptadecane |
| 3 Tetradecane | 11 Menthol |
| 4 m-Dichlorobenzene | 12 Salicylic acid, methyl ester |
| 5 2-Ethyl-1-hexanol | 13 Ceraphyl 230 ← Emollient Agent |
| 6 Decanal | 14 1-Dodecanol |
| 7 Pentadecane | 15 Crotonol ← Cream that the sample put on his body before sleep |
| 8 trans-2-Nonenal | 16 trans-Squalene |

GL Sciences disclaims any and all responsibility for any injury or damage which may be caused by this data directly or indirectly. We reserve the right to amend this information or data at any time and without any prior announcement.

GL Sciences Inc. Japan

22-1 Nishishinjuku 6-chome
Shinjuku-ku, Tokyo
163-1130, Japan

Phone: +81-3-5323-6620
Fax: +81-3-5323-6621
Email: world@glsciences.com
Web: www.glsciences.com

GL Sciences Inc. USA

4733 Torrance Blvd. Suite 255
Torrance, CA 90503
USA

Phone: +1-310-265-4424
Fax: +1-310-265-4425
Email: info@glsciencesinc.com
Web: www.glsciencesinc.com

GL Sciences B.V.

Dillenburgstraat 7C
5652AM, Eindhoven
The Netherlands

Phone: +31-40-254-9531
Email: info@glsciences.eu
Web: www.glsciences.eu

GL Sciences (Shanghai) Limited

Tower B, Room 2003
Far East International Plaza
No.317 Xianxia Road, Changning District
Shanghai, China 200051

Phone: +86-21-62782272
Email: contact@glsciences.com.cn
Web: www.glsciences.com.cn



International Distributors

Visit our Website at www.glsciences.com/distributors