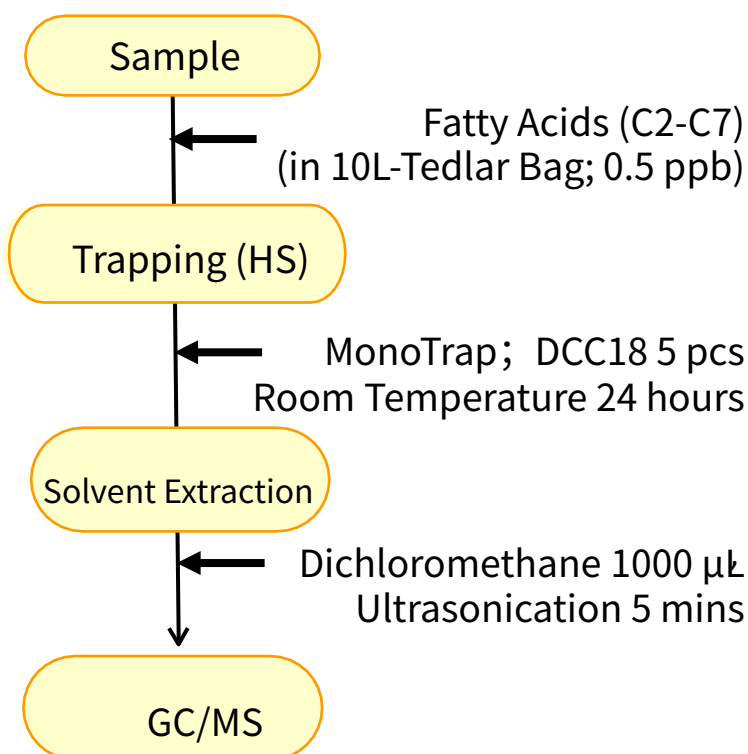


MonoTrap is a hybrid novel adsorbent that combines a large surface area and the properties of silica gel, activated carbon, and ODS. Utilizing the surface of porous silica, it can be used as a tool that makes use of the large surface area and the adsorbent effect caused by the inclusion of activated carbon for high collection efficiency and for short time and sensitive analysis. In this study, we used MonoTrap DCC18 (with activated carbon) to recover and analyze airborne fatty acids. Activated carbon is effective in collecting polar components such as acid, which can efficiently collect low concentrations of fatty acids. The highly inert WAX-column InertCap Pure-WAX is the optimal column for fragrance components analyses. It is recommended to use this medicine in conjunction with MonoTrap.

Column : InertCap Pure-WAX (Cat.No.1010-68142) 0.25 mm I.D. × 30 m df=0.25 μm

## Protocol



### GC Condition

**System** : SHIMADZU GC-2010, GCMS-QP2010

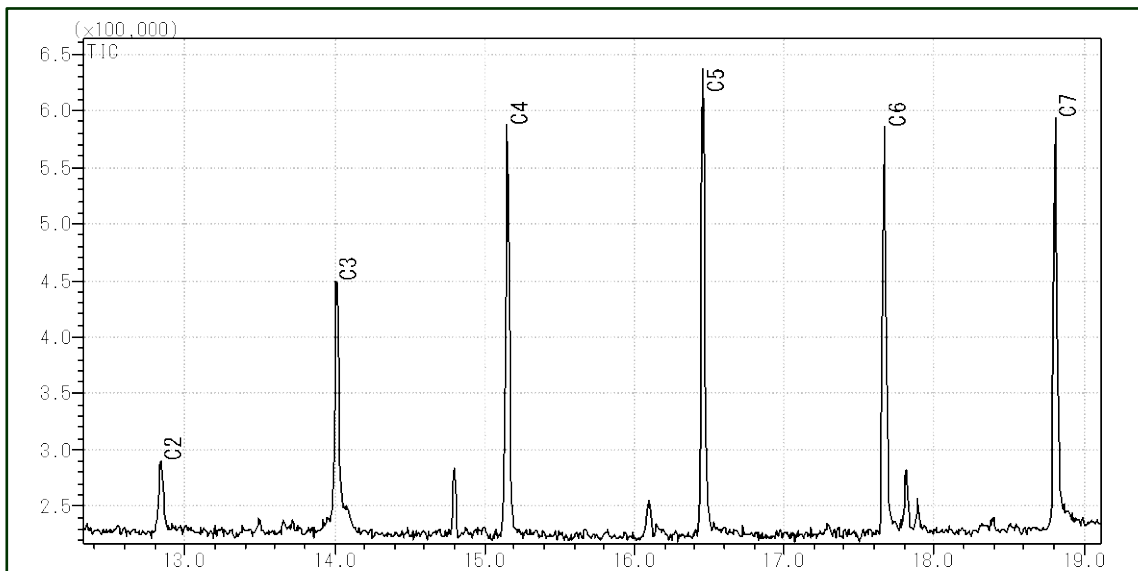
**Column** : InertCap Pure-WAX  
0.25 mm I.D. × 30 m df=0.25 μm

**Column Temp** : 50 °C (5 min) → 6 °C/min → 250 °C

**Carrier Gas** : He 1.15 mL/min

**Injection** : Split 1:5, 1 μL 250 °C

**Detection** : MS Scan ( $m/z$ , 28-450)



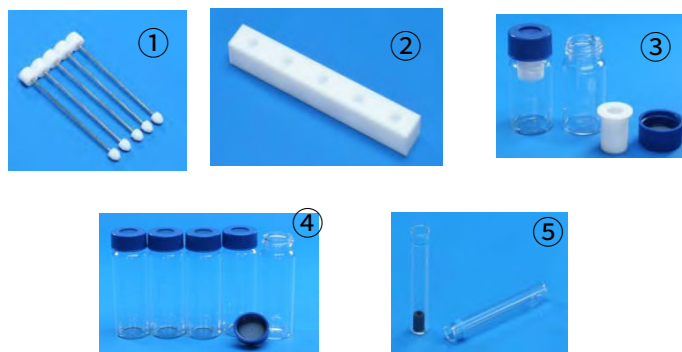
MonoTrap Series

Cat.No	Description	Shape	Size	Active Carbon	Functional Group
1050-72101	MonoTrap DCC18	Disk	O.D.10 mmx thick 1 mm	Yes	C18
1050-72201	MonoTrap RCC18	Rod	5mm	Yes	C18
1050-71101	MonoTrap DSC18	Disk	O.D.10 mmx thick 1 mm	No	C18
1050-71201	MonoTrap RSC18	Rod	5mm	No	C18



MonoTrap Convenient MonoTrap Start-UP-KIT

Description	Qty.
① MT Holder	5
② MT Stand	1
③ MT Extract Cup with Vial (20mL)	5
④ Clean Pin Hole Septum with vial (40mL)	5
⑤ 200µL Glass Insert (FlatBottom)	40
⑥ MonoTrap DCC18	20
⑦ MonoTrap RCC18	20
⑧ MonoTrap DSC18	20
⑨ MonoTrap RSC18	20



GL Sciences disclaims any and all responsibility for any injury or damage which may be caused by this data directly or indirectly. We reserve the right to amend this information or data at any time and without any prior announcement.

**GL Sciences Inc. Japan**

22-1 Nishishinjuku 6-chome  
Shinjuku-ku, Tokyo  
163-1130, Japan

Phone: +81-3-5323-6620  
Fax: +81-3-5323-6621  
Email: [world@glsc.co.jp](mailto:world@glsc.co.jp)  
Web: [www.glsciences.com](http://www.glsciences.com)

**GL Sciences Inc. USA**

4733 Torrance Blvd. Suite 255  
Torrance, CA 90503  
USA

Phone: +1-310-265-4424  
Fax: +1-310-265-4425  
Email: [info@glsciencesinc.com](mailto:info@glsciencesinc.com)  
Web: [www.glsciencesinc.com](http://www.glsciencesinc.com)

**GL Sciences B.V.**

Dillenburgstraat 7C  
5652AM, Eindhoven  
The Netherlands

Phone: +31-40-254-9531  
Email: [info@glsciences.eu](mailto:info@glsciences.eu)  
Web: [www.glsciences.eu](http://www.glsciences.eu)

**GL Sciences (Shanghai) Limited**

Tower B, Room 2003  
Far East International Plaza  
No.317 Xianxia Road, Changning District  
Shanghai, China 200051

Phone: +86-21-62782272  
Email: [contact@glsciences.com.cn](mailto:contact@glsciences.com.cn)  
Web: [www.glsciences.com.cn](http://www.glsciences.com.cn)



International Distributors

Visit our Website at [www.glsciences.com/distributors](http://www.glsciences.com/distributors)