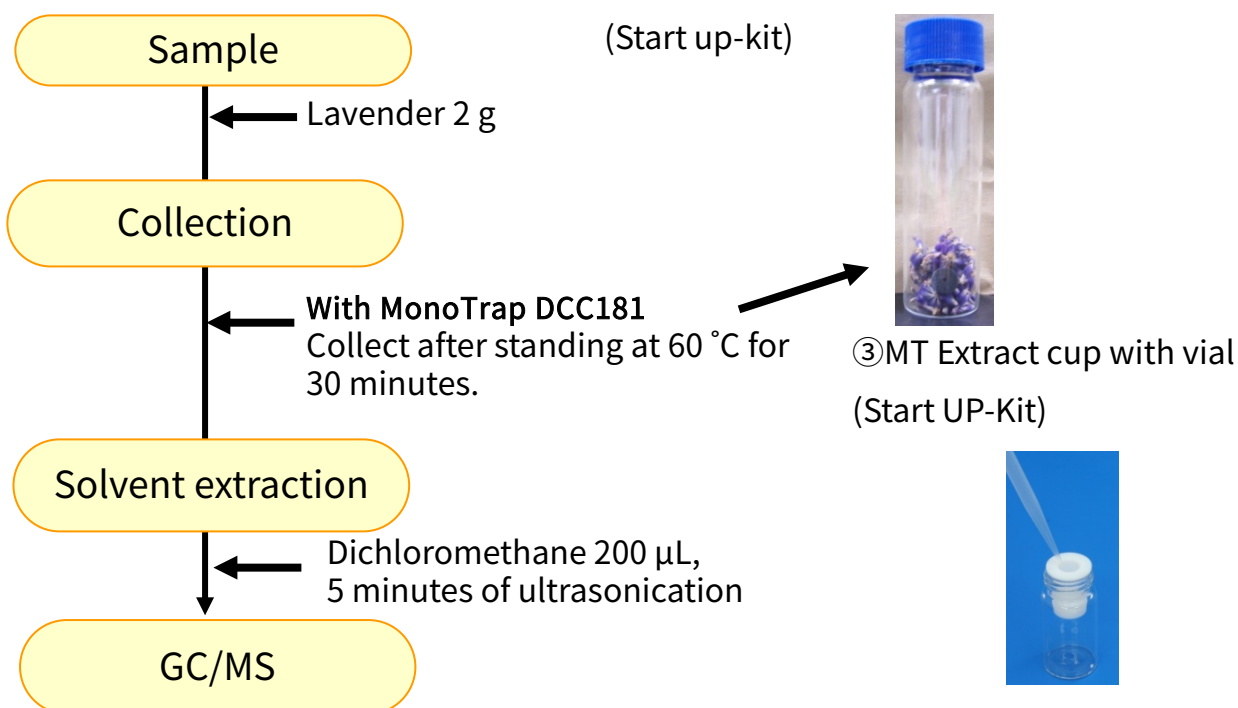


Analysis of Lavender Flavor Components with Simple Concentration - Using sorptive Media MonoTrap

MonoTrap is a novel hybrid adsorbent that combines a large surface area with the properties of silica gel, activated carbon and ODS. High collection efficiency is achieved due to the large surface area of the porous silica and the adsorption effect of activated carbon, this makes it possible to perform high-sensitivity analysis in a short time.

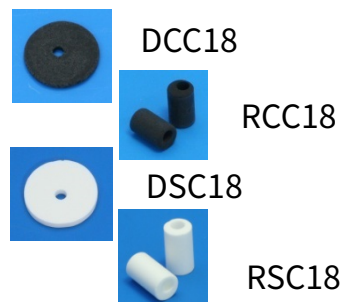
In this application, a simple concentration and analysis was made for the aroma components in lavender using MonoTrap carbon-containing (DCC18). By simply placing samples in the vials it was easy to concentrate, analyze and identify the characteristic flavor components, β -Linalool, etc. Due to the large surface area, considerable information was obtained with high sensitivity even with solvent extraction, even when sample loading was large and dilution was a concern.

Preliminary processing procedure



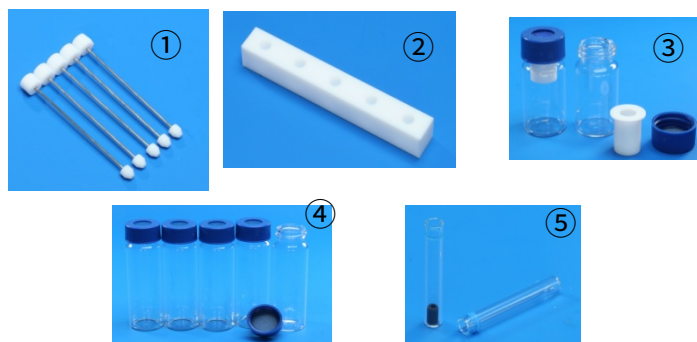
MonoTrap Series

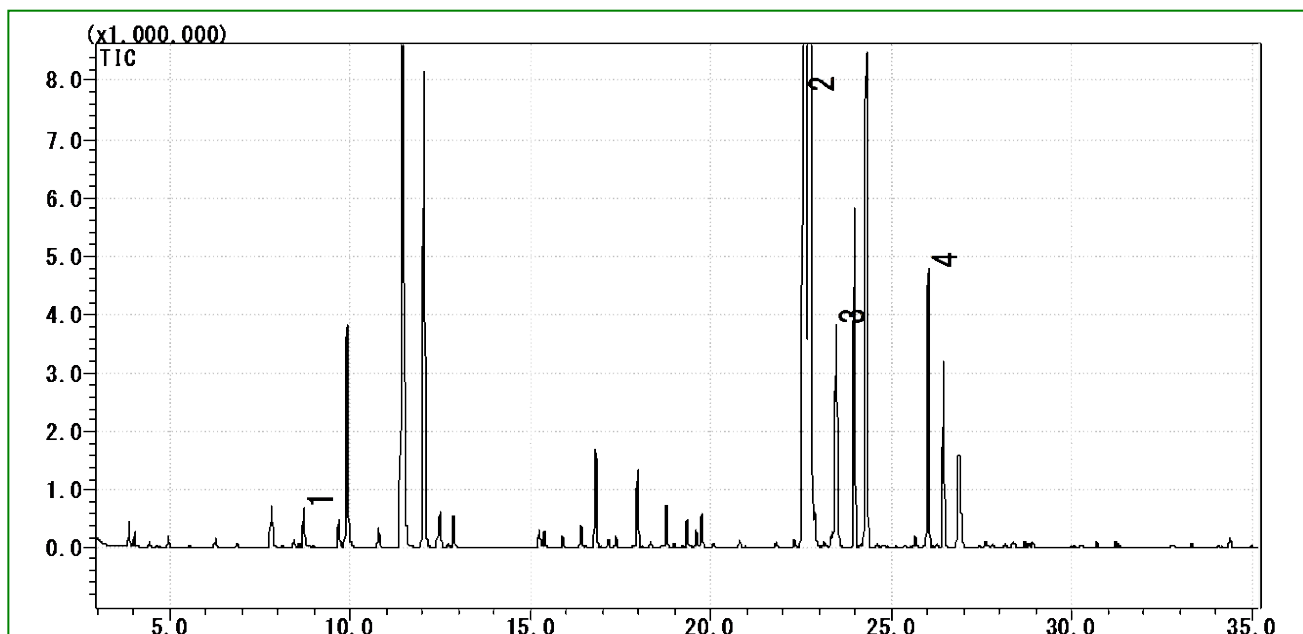
Cat.No	Description	Configuration	Size	Activated Carbon	Functional Group
1050-72101	MonoTrap DCC18	Disk	O.D.10mmx thick 1mm	Yes	C18
1050-72201	MonoTrap RCC18	Rod	O.D.2.9 mmxL.D.1mm xH i g h t	Yes	C18
1050-71101	MonoTrap DSC18	Disk	O.D.10mmx thick 1mm	No	
1050-71201	MonoTrap RSC18	Rod	O.D.2.9 mmxL.D.1mm xH i g h t	No	C18



Introduction of the convenient MonoTrap start up-kit -

Description	Qty.
① MT Holder	5
② MT Stand	1
③ MT Extract Cup with Vial(20 ml)	5
④ Clean Pin Hole Septum with vial(40 ml)	5
⑤ 200 μ L glass insert (flat bottom)	40
⑥ MonoTrap DCC18	20
⑦ MonoTrap RCC18	20
⑧ MonoTrap DSC18	20
⑨ MonoTrap RSC18	20





- 1 β -Myrcene
- 2 β -Linalool
- 3 Caryophyllene
- 4 β -Farnesene

*Results of identification with standard samples

GC Conditions

System :SHIMADZU GC-2010, GCMS-QP2010

Column :InertCap Pure-WAX(Cat.1010-68142)
0.25 mm I.D. x 30 m df=0.25 μ m

Column Temp :40 °C (5 min)→4 °C/min→180 °C→20 °C/min→250 °C (5 min)

Carrier Gas :He 120 kPa

Injection :Split 1: 10, 1 μ L

Detection :MS Scan (m/z , 40-350)

InertCap Pure-WAX is the best highly inert wax column for flavor analysis.
It is recommended that it is used in conjunction with MonoTrap.

GL Sciences disclaims any and all responsibility for any injury or damage which may be caused by this data directly or indirectly. We reserve the right to amend this information or data at any time and without any prior announcement.

GL Sciences Inc. Japan

22-1 Nishishinjuku 6-chome
Shinjuku-ku, Tokyo
163-1130, Japan

Phone: +81-3-5323-6620
Fax: +81-3-5323-6621
Email: world@glsc.co.jp
Web: www.glsciences.com

GL Sciences Inc. USA

4733 Torrance Blvd. Suite 255
Torrance, CA 90503
USA

Phone: +1-310-265-4424
Fax: +1-310-265-4425
Email: info@glsciencesinc.com
Web: www.glsciencesinc.com

GL Sciences B.V.

Dillenburgstraat 7C
5652AM, Eindhoven
The Netherlands

Phone: +31-40-254-9531
Email: info@glsciences.eu
Web: www.glsciences.eu

GL Sciences (Shanghai) Limited

Tower B, Room 2003
Far East International Plaza
No.317 Xianxia Road, Changning District
Shanghai, China 200051

Phone: +86-21-62782272
Email: contact@glsciences.com.cn
Web: www.glsciences.com.cn



International Distributors

Visit our Website at www.glsciences.com/distributors