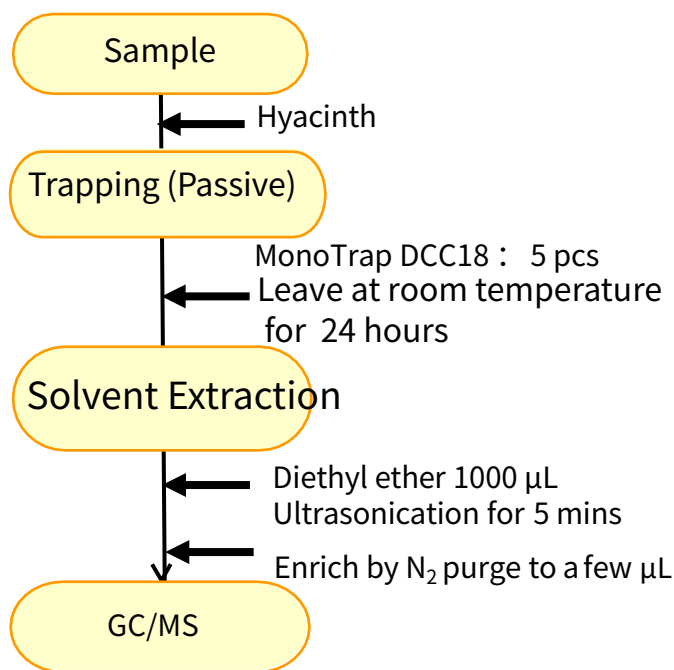


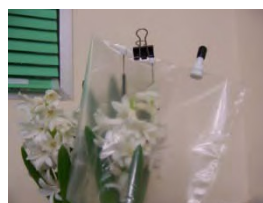
MonoTrap is a hybrid novel adsorbent that combines a large surface area and the properties of silica gel, activated carbon, and ODS. The large surface area of porous silica and the adsorbent effect due to the inclusion of activated carbon result in high collection efficiency. Therefore, high-sensitivity analysis can be performed in a short time. In this study, MonoTrap DCC18 (containing activated carbon) was used to concentrate the flavor components of hyacinth in a simple manner. Multiple MonoTrap were placed for passive sampling.

Protocol

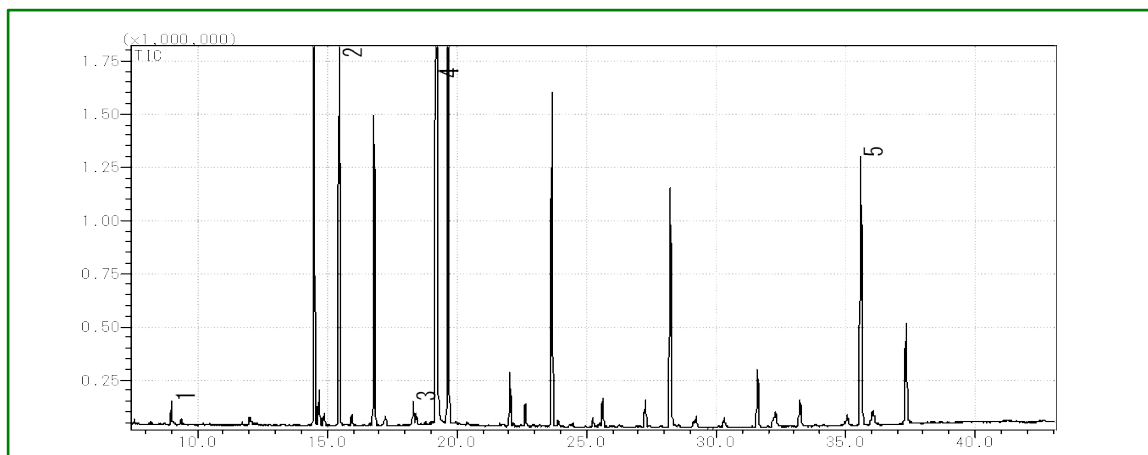


Conditions

System	: GC/MS SHIMADZU GC-2010, GCMS-QP2010
Column	: InertCap Pure-WAX 0.25 mm I.D. x 30 m df = 0.25 µm
Column Temp.	: 70 °C - 4 °C/min - 220 °C
Carrier Gas	: He 90 kPa
Injection	: Split 1:10 250 °C
Detection	: MS Scan (<i>m/z</i> 50-450)
Sample Size	: 1 µL



- 1 Benzaldehyde
- 2 α -Farnesene
- 3 Benzyl Alcohol
- 4 Phenylethyl Alcohol
- 5 Benzyl Benzoate



GL Sciences disclaims any and all responsibility for any injury or damage which may be caused by this data directly or indirectly. We reserve the right to amend this information or data at any time and without any prior announcement.

GL Sciences Inc. Japan

22-1 Nishishinjuku 6-chome
Shinjuku-ku, Tokyo
163-1130, Japan

Phone: +81-3-5323-6620
Fax: +81-3-5323-6621
Email: world@glsc.co.jp
Web: www.glsciences.com

GL Sciences Inc. USA

4733 Torrance Blvd. Suite 255
Torrance, CA 90503
USA

Phone: +1-310-265-4424
Fax: +1-310-265-4425
Email: info@glsciencesinc.com
Web: www.glsciencesinc.com

GL Sciences B.V.

Dillenburgstraat 7C
5652AM, Eindhoven
The Netherlands

Phone: +31-40-254-95.eu
Web: www.glsciences.eu

GL Sciences (Shanghai) Limited

Tower B, Room 2003
Far East International Plaza
No.317 Xianxia Road, Changning District
Shanghai, China 200051

Phone: +86-21-62782272
Email: contact@glsciences.com.cn
Web: www.glsciences.com.cn



International Distributors

Visit our Website at www.glsciences.com/distributors