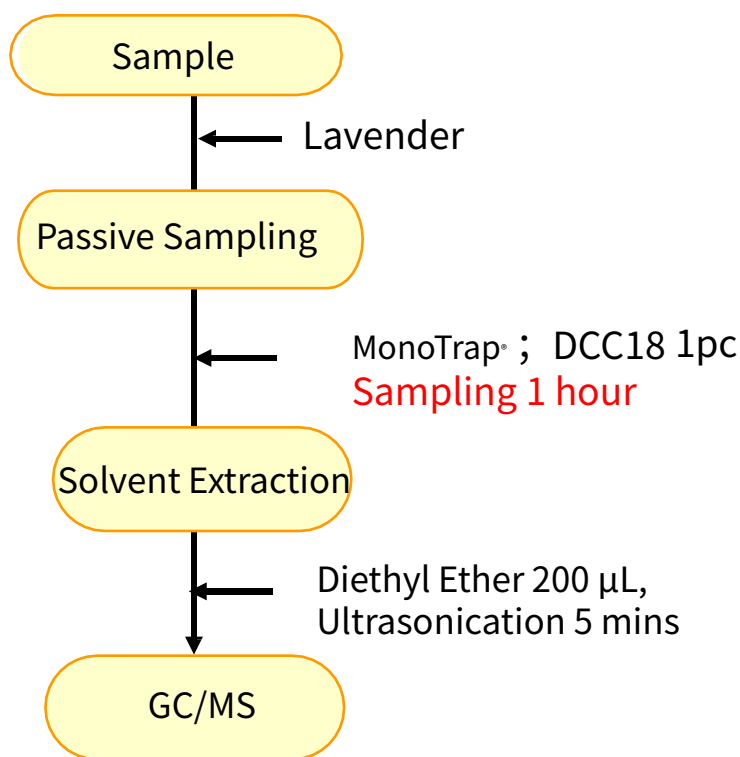


# Quick Passive Sampling of Lavender Fragrance with MonoTrap

MonoTrap is a hybrid novel adsorbent that combines a large surface area and the properties of silica gel, activated carbon, and ODS. Due to the large surface area of porous silica and the adsorption effect caused by the inclusion of activated carbon, a high collection efficiency is obtained. Therefore, high-sensitivity analysis can be performed in a short time. In this study, we used MonoTrapDCC18 (with activated carbon) to perform simple enrichment analyses of flavor components in lavenders. A single DCC18 was placed inside a sac-like teddleback for passive sampling. (For dedicated teddlebacks, please contact us separately.) With only 1 hour of collection, we were able to perform sensitive analysis without reconcentration of the extraction solvent. The highly inert WAX-column InertCap Pure-WAX is the optimal column for fragrance components analyses. It is recommended to use this medicine in conjunction with MonoTrap.

Column : InertCap Pure-WAX(Cat.1010-68142) 0.25mmI.D.×30m df=0.25µm

## Protocol

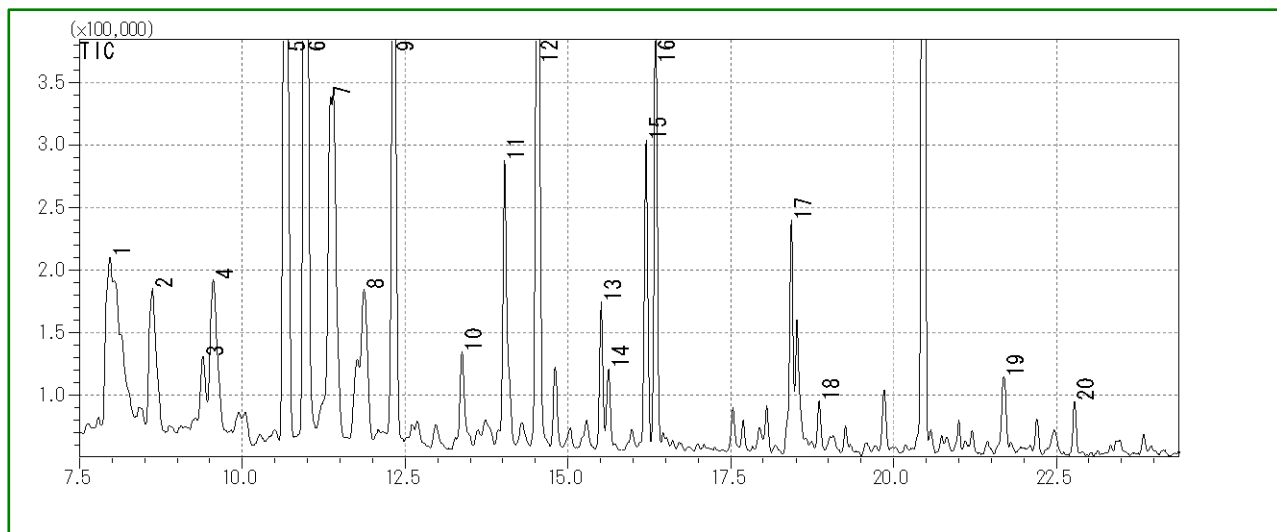


③MT Extract Cup with Vial  
(Start UP-Kit)

### GC Condition

- System** : SHIMADZU GC-2010, GCMS-QP2010  
**Column** : **InertCap Pure-WAX** (Cat.No. 1010-68142)  
 0.25 mm I.D. × 30 m df=0.25 µm  
**Column Temp** : 70 °C→4 °C/min→220 °C  
**Carrier Gas** : He 75 kPa  
**Injection** : Split /Splitless, 1 µL  
 250 °C  
**Detection** : MS Scan (*m/z*: 35-450)

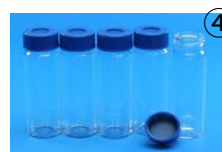
Ultra inert WAX column **InertCap Pure-WAX** is highly recommended to analyze aromatic compounds together with **MonoTrap**



- |    |  |    |                     |
|----|--|----|---------------------|
| 1  | $\alpha$ -Methyl- $\alpha$ -[4-methyl-3-pentenyl]oxiranemethanol | 11 | $\beta$ -Farnesene  |
| 2  | Linalool oxide trans   | 12 | Borneol             |
| 3  | Decanal  | 13 | Nerol acetate       |
| 4  | Alcanfor   | 14 | Epoxylinolol        |
| 5  | $\beta$ -Linalool  | 15 | $\gamma$ -Cadinene  |
| 6  | Linalool acetate   | 16 | Geraniol acetate    |
| 7  | $\alpha$ -Santalene  | 17 | p-Cymen-8-ol        |
| 8  | Caryophyllene  | 18 | Geranyl Acetone     |
| 9  | 2-Isopropenyl-5-methyl-4-hexenylacetate                          | 19 | Caryophyllene oxide |
| 10 | Teresantalol   | 20 | Teresantalol        |

**MonoTrap Convenient MonoTrap Start-UP-KIT**

	Description	Qty.
①	MT Holder	5
②	MT Stand	1
③	MT Extract Cup with Vial (20 mL)	5
④	Clean Pin Hole Septum with vial (40 mL)	5
⑤	200 $\mu$ L Glass Insert (Flat Bottom)	40
⑥	MonoTrap DCC18	20
⑦	MonoTrap RCC18	20
⑧	MonoTrap DSC18	20
⑨	MonoTrap RSC18	20



GL Sciences disclaims any and all responsibility for any injury or damage which may be caused by this data directly or indirectly. We reserve the right to amend this information or data at any time and without any prior announcement.

**GL Sciences Inc. Japan**

22-1 Nishishinjuku 6-chome  
Shinjuku-ku, Tokyo  
163-1130, Japan

Phone: +81-3-5323-6620  
Fax: +81-3-5323-6621  
Email: [world@glsc.co.jp](mailto:world@glsc.co.jp)  
Web: [www.glsciences.com](http://www.glsciences.com)

**GL Sciences Inc. USA**

4733 Torrance Blvd. Suite 255  
Torrance, CA 90503  
USA

Phone: +1-310-265-4424  
Fax: +1-310-265-4425  
Email: [info@glsciencesinc.com](mailto:info@glsciencesinc.com)  
Web: [www.glsciencesinc.com](http://www.glsciencesinc.com)

**GL Sciences B.V.**

Dillenburgstraat 7C  
5652AM, Eindhoven  
The Netherlands

Phone: +31-40-254-9531  
Email: [info@glsciences.eu](mailto:info@glsciences.eu)  
Web: [www.glsciences.eu](http://www.glsciences.eu)

**GL Sciences (Shanghai) Limited**

Tower B, Room 2003  
Far East International Plaza  
No.317 Xianxia Road, Changning District  
Shanghai, China 200051

Phone: +86-21-62782272  
Email: [contact@glsciences.com.cn](mailto:contact@glsciences.com.cn)  
Web: [www.glsciences.com.cn](http://www.glsciences.com.cn)



**International Distributors**

Visit our Website at [www.glsciences.com/distributors](http://www.glsciences.com/distributors)