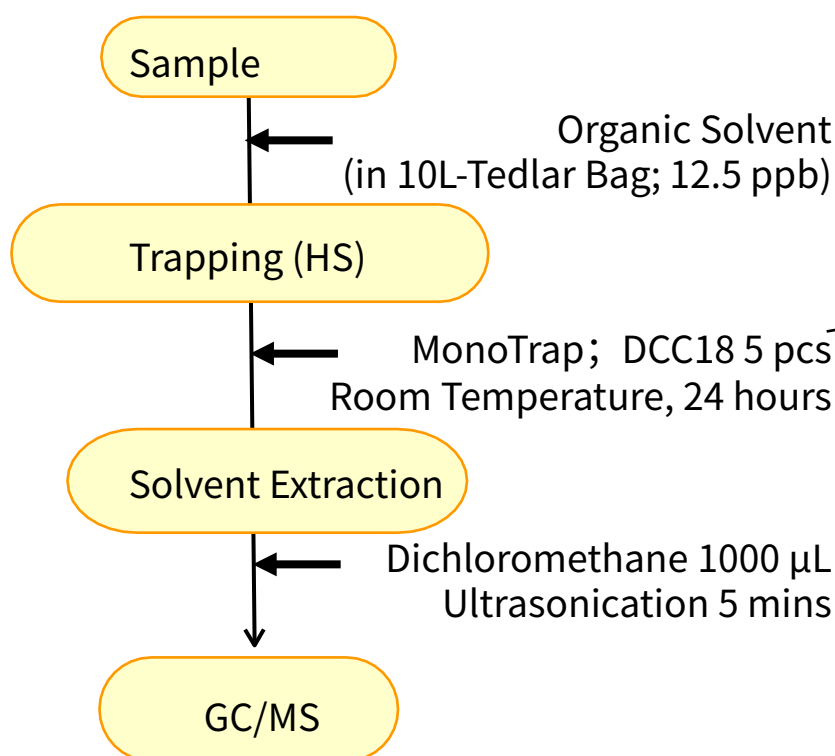


MonoTrap is a hybrid novel adsorbent that combines a large surface area and the properties of silica gel, activated carbon, and ODS. Utilizing the surface of porous silica, it can be used as a tool that makes use of the large surface area and the adsorbent effect caused by the inclusion of activated carbon for high collection efficiency and for short time and sensitive analysis. This time, we used MonoTrap DCC18 (with activated carbon) to recover aerial organic solvents. The effects of activated carbon allow efficient capture of aromatic hydrocarbons such as Xylene and Styrene. The highly inert WAX-column InertCap Pure-WAX is the optimal column for fragrance components analyses. It is recommended to use this medicine in conjunction with MonoTrap.

Protocol



GC Condition

System : SHIMADZU GC-2010, GCMS-QP2010

Column : InertCap Pure-WAX
0.25 mm I.D. \times 30m df=0.25 μ m

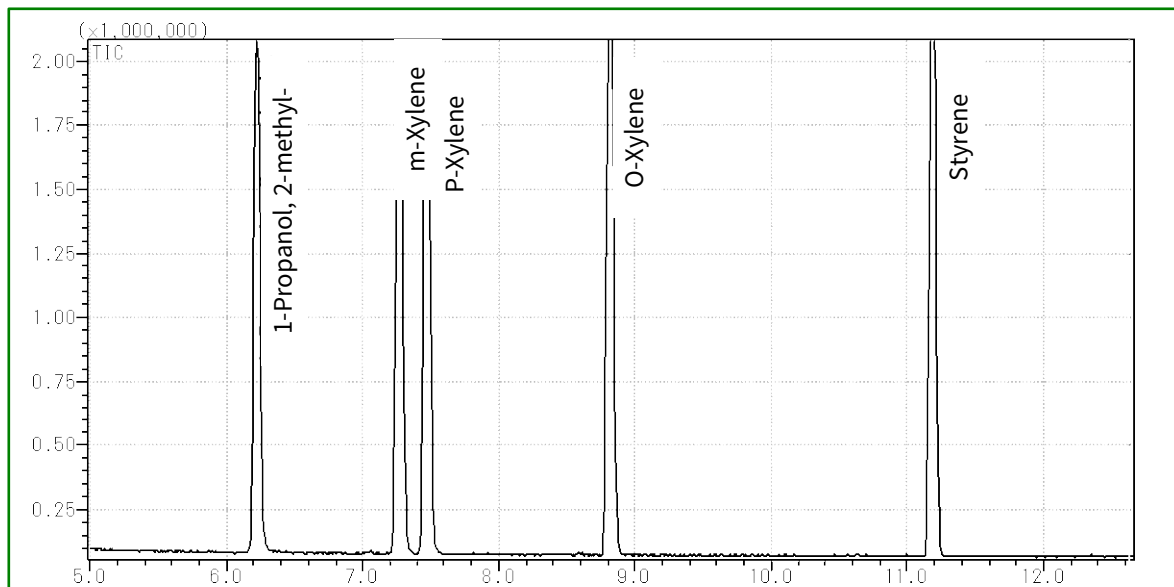
Column Temp : 40 $^{\circ}$ C (5min) \rightarrow 5 $^{\circ}$ C/min \rightarrow 120 $^{\circ}$ C \rightarrow 20 $^{\circ}$ C/min \rightarrow 250 $^{\circ}$ C

Carrier Gas : He 1.15mL/min

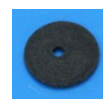
Injection : Split 1:100, 1 μ L 250 $^{\circ}$ C

Detection : MS Scan (m/z ;25-450)

Ultra inert WAX column **InertCap Pure-WAX** is highly recommended to analyze aromatic compounds together with **MonoTrap**



MonoTrap Series



DCC18



RCC18



DSC18

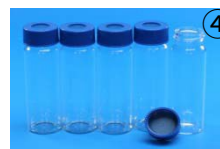


RSC18

Cat.No	Description	Shape	Size	Active Carbon	Functional Group
1050-72101	MonoTrap DCC18	Disk	O.D.10 mm x thick 1 mm	Yes	C18
1050-72201	MonoTrap RCC18	Rod	5 mm	Yes	C18
1050-71101	MonoTrap DSC18	Disk	O.D. 10 mm x thick 1 mm	No	C18
1050-71201	MonoTrap RSC18	Rod	5 mm	No	C18

MonoTrap Convenient MonoTrap Start-UP-KIT

Description	Qty.
① MT Holder	5
② MT Stand	1
③ MT Extract Cup with Vial (20 mL)	5
④ Clean Pin Hole Septum with vial (40 mL)	5
⑤ 200µL Glass Insert (FlatBottom)	40
⑥ MonoTrap DCC18	20
⑦ MonoTrap RCC18	20
⑧ MonoTrap DSC18	20
⑨ MonoTrap RSC18	20



GL Sciences disclaims any and all responsibility for any injury or damage which may be caused by this data directly or indirectly. We reserve the right to amend this information or data at any time and without any prior announcement.

GL Sciences Inc. Japan

22-1 Nishishinjuku 6-chome
Shinjuku-ku, Tokyo
163-1130, Japan

Phone: +81-3-5323-6620
Fax: +81-3-5323-6621
Email: world@glsc.co.jp
Web: www.glsciences.com

GL Sciences Inc. USA

4733 Torrance Blvd. Suite 255
Torrance, CA 90503
USA

Phone: +1-310-265-4424
Fax: +1-310-265-4425
Email: info@glsciencesinc.com
Web: www.glsciencesinc.com

GL Sciences B.V.

Dillenburgstraat 7C
5652AM, Eindhoven
The Netherlands

Phone: +31-40-254-9531
Email: info@glsciences.eu
Web: www.glsciences.eu

GL Sciences (Shanghai) Limited

Tower B, Room 2003
Far East International Plaza
No.317 Xianxia Road, Changning District
Shanghai, China 200051

Phone: +86-21-62782272
Email: contact@glsciences.com.cn
Web: www.glsciences.com.cn



International Distributors

Visit our Website at www.glsciences.com/distributors