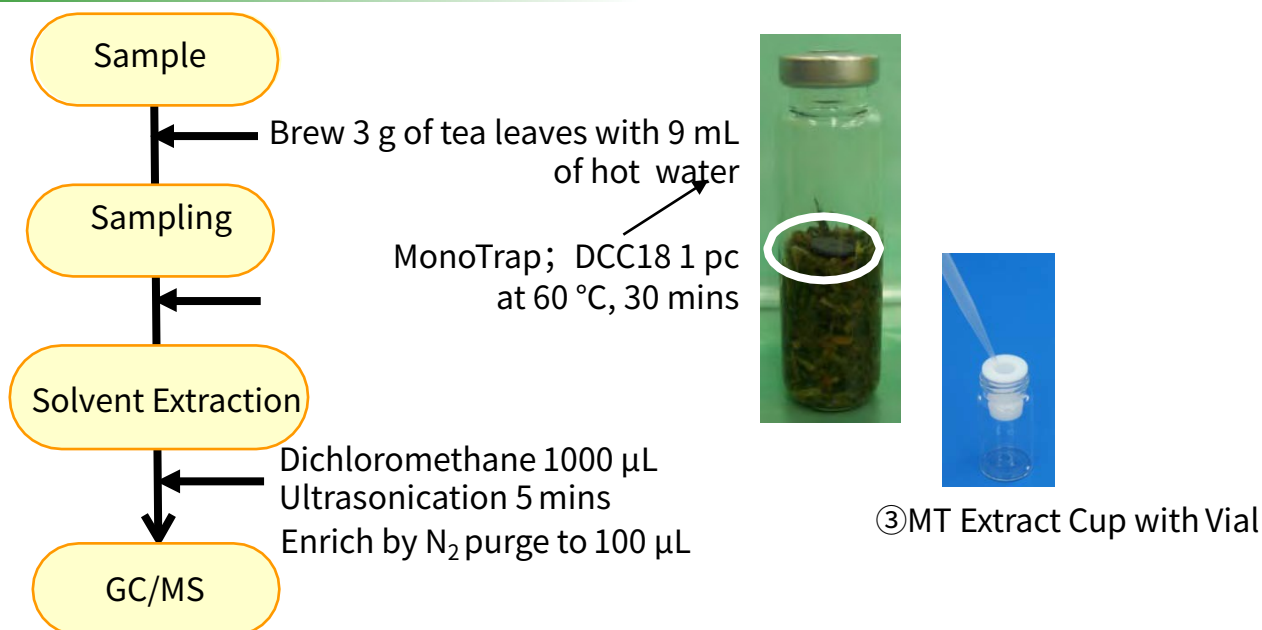


Easy Enrichment of Tea Fragrance Compounds with MonoTrap

MonoTrap is a hybrid novel adsorbent that combines a large surface area and the properties of silica gel, activated carbon, and ODS. Due to the large surface area of porous silica and the adsorption effect caused by the inclusion of activated carbon, a high collection efficiency is obtained. Therefore, high-sensitivity analysis can be performed in a short time. In this study, we used MonoTrap DCC18 (with activated carbon) to perform simple enrichment analyses of the aroma components of tea. The tea leaves were collected by placing MonoTrap directly on them with hot water. The highly inert WAX-column InertCap Pure-WAX is the optimal column for fragrance components analyses.

Column : InertCap Pure-WAX (Cat.No. 1010-68142) 0.25 mm I.D. × 30 m df=0.25 μm

Protocol

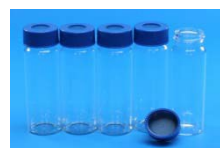


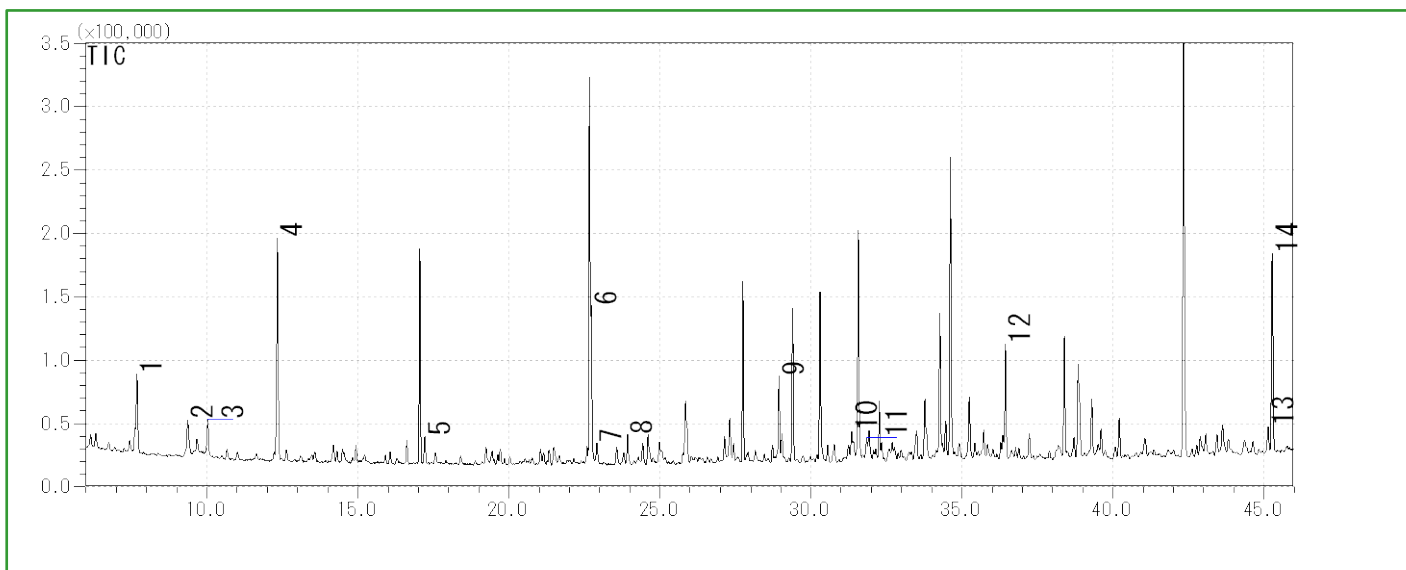
GC Condition

System : SHIMADZU GC-2010, GCMS-QP2010Plus
Column : **InertCap Pure-WAX** (Cat.No. 1010-68142)
 0.25 mm I.D. × 30 m df=0.25 μm
Column Temp : 40 °C (5 min) → 4 °C/min → 250 °C
Carrier Gas : He 120 kPa
Injection : Splitless, 1 μL 250 °C
Detection : MS Scan (*m/z*, 40-350)

Mono Trap Convenient MonoTrap Start-UP Kit

Description	Qty.
① MT Holder	5
② MT Stand	1
③ MT Extract Cup with Vial (20 mL)	5
④ Clean Pin Hole Septum with vial (40 mL)	5
⑤ 200 μL Glass Insert (Flat Bottom)	40
⑥ MonoTrap DCC18	20
⑦ MonoTrap RCC18	20
⑧ MonoTrap DSC18	20
⑨ MonoTrap RSC18	20





- | | |
|----------------------------|-------------------------------------|
| 1 Isobutenyl methyl ketone | 8 1-Ethyl-1H-pyrrole-2-carbaldehyde |
| 2 3-Penten-2-ol | 9 Epoxylnalol |
| 3 D-Limonene | 10 trans-Geraniol |
| 4 1-Pentanol | 11 Benzyl alcohol |
| 5 Nonanal | 12 trans-Nerolidol |
| 6 Dimethyl sulfoxide | 13 Coumarine |
| 7 1-Octanol | 14 Indole |

Red . . . [Food] Fragrance Encyclopedia by Japan Perfumery & Flavoring Association

Ultra inert WAX column **InertCap Pure-WAX** is highly recommended to analyze aromatic compounds together with **MonoTrap**

GL Sciences disclaims any and all responsibility for any injury or damage which may be caused by this data directly or indirectly. We reserve the right to amend this information or data at any time and without any prior announcement.

GL Sciences Inc. Japan

22-1 Nishishinjuku 6-chome
Shinjuku-ku, Tokyo
163-1130, Japan

Phone: +81-3-5323-6620
Fax: +81-3-5323-6621
Email: world@glsc.co.jp
Web: www.glsciences.com

GL Sciences Inc. USA

4733 Torrance Blvd. Suite 255
Torrance, CA 90503
USA

Phone: +1-310-265-4424
Fax: +1-310-265-4425
Email: info@glsciencesinc.com
Web: www.glsciencesinc.com

GL Sciences B.V.

Dillenburgstraat 7C
5652AM, Eindhoven
The Netherlands

Phone: +31-40-254-9531
Email: info@glsciences.eu
Web: www.glsciences.eu

GL Sciences (Shanghai) Limited

Tower B, Room 2003
Far East International Plaza
No.317 Xianxia Road, Changning District
Shanghai, China 200051

Phone: +86-21-62782272
Email: contact@glsciences.com.cn
Web: www.glsciences.com.cn



International Distributors

Visit our Website at www.glsciences.com/distributors