

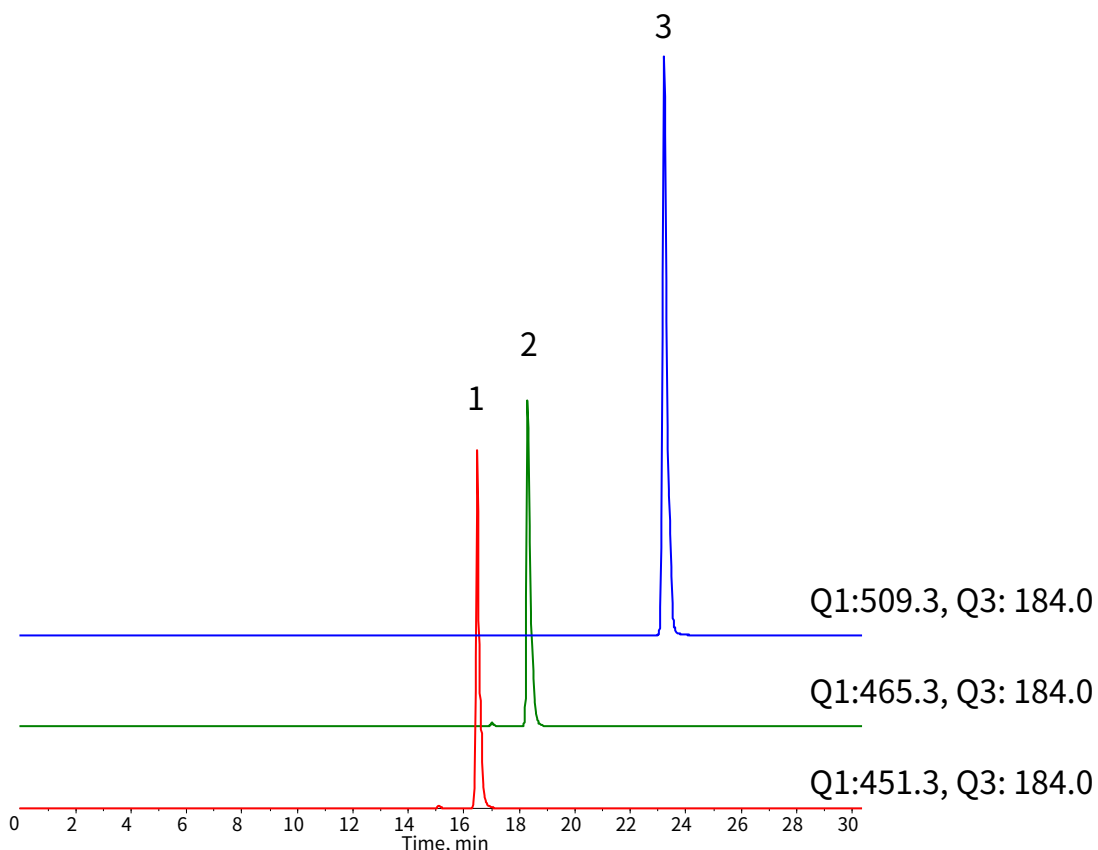
InertSearch™ for LC

Inertsil® Applications

Analysis of Phospholipids

Data No. LL033-0000

The chromatograms were provided by Masamitsu Maekawa and Nariyasu Mano, Department of Pharmaceutical Sciences, Tohoku University Hospital, 1-1 Seiryomachi, Aoba-ku, Sendai, Miyagi, 980-8574, Japan



Conditions

Column : InertSustain C18
(2 μm, 150 x 2.1 mm I.D., Metal-free hardware)

Column Cat. No. : 5020-87402

Eluent : A) CH₃CN/Acetone/HCOOH = 50/50/0.1, v/v/v
B) 0.1% HCOOH in H₂O

Time(min)	A (vol%)	B (vol%)
0	25	75
30	70	30

Flow rate : 0.4 mL/min

Col. Temp. : 40 °C

Detection : MS/MS (ESI, Positive, MRM)

Injection Vol. : 1 μL

Sample : Standard (1000 ng/mL each)

Analyte:

1. Lysosphingomyelin (d17:1)
(*Nor*-Sphingosylphosphorylcholine)
2. Lysosphingomyelin (d18:1)
(Sphingosylphosphorylcholine)
3. *N*-Palmitoyl-*O*-phosphocholine-serine