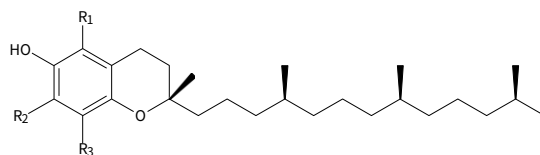


This is an application data of analyzing Vitamin E in food by HPLC. Vitamin E is a fat-soluble vitamin, which exists tocopherol and tocotrienol. Vitamine E were used as antioxidant.

Detection was made by Fluorescence detector and confirmed a good peak shape.

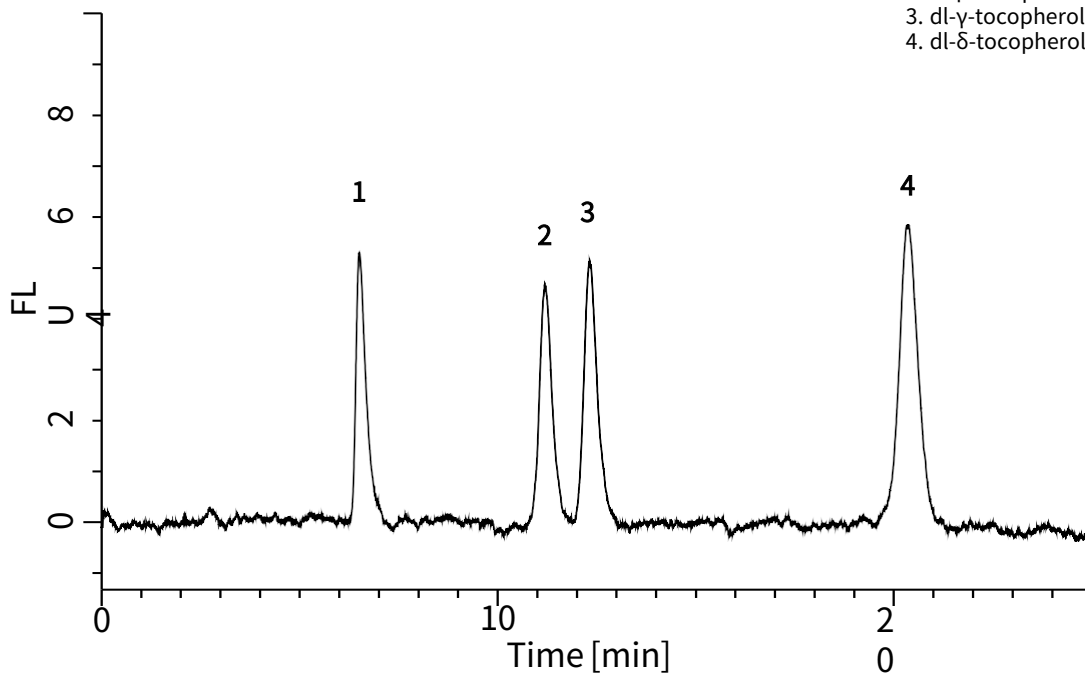
(K. Suzuki)

Chemical Structures



V.E.	R1	R2	R3
α -tocopherol	CH ₃	CH ₃	CH ₃
β -tocopherol	CH ₃	H	CH ₃
γ -tocopherol	H	CH ₃	CH ₃
δ -tocopherol	H	H	CH ₃

Analysis of Standard Solution

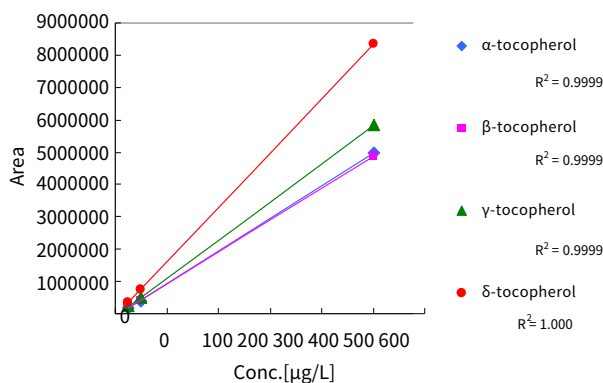


1. dl- α -tocopherol (25 μ g/L)
2. dl- β -tocopherol (25 μ g/L)
3. dl- γ -tocopherol (25 μ g/L)
4. dl- δ -tocopherol (25 μ g/L)

HPLC

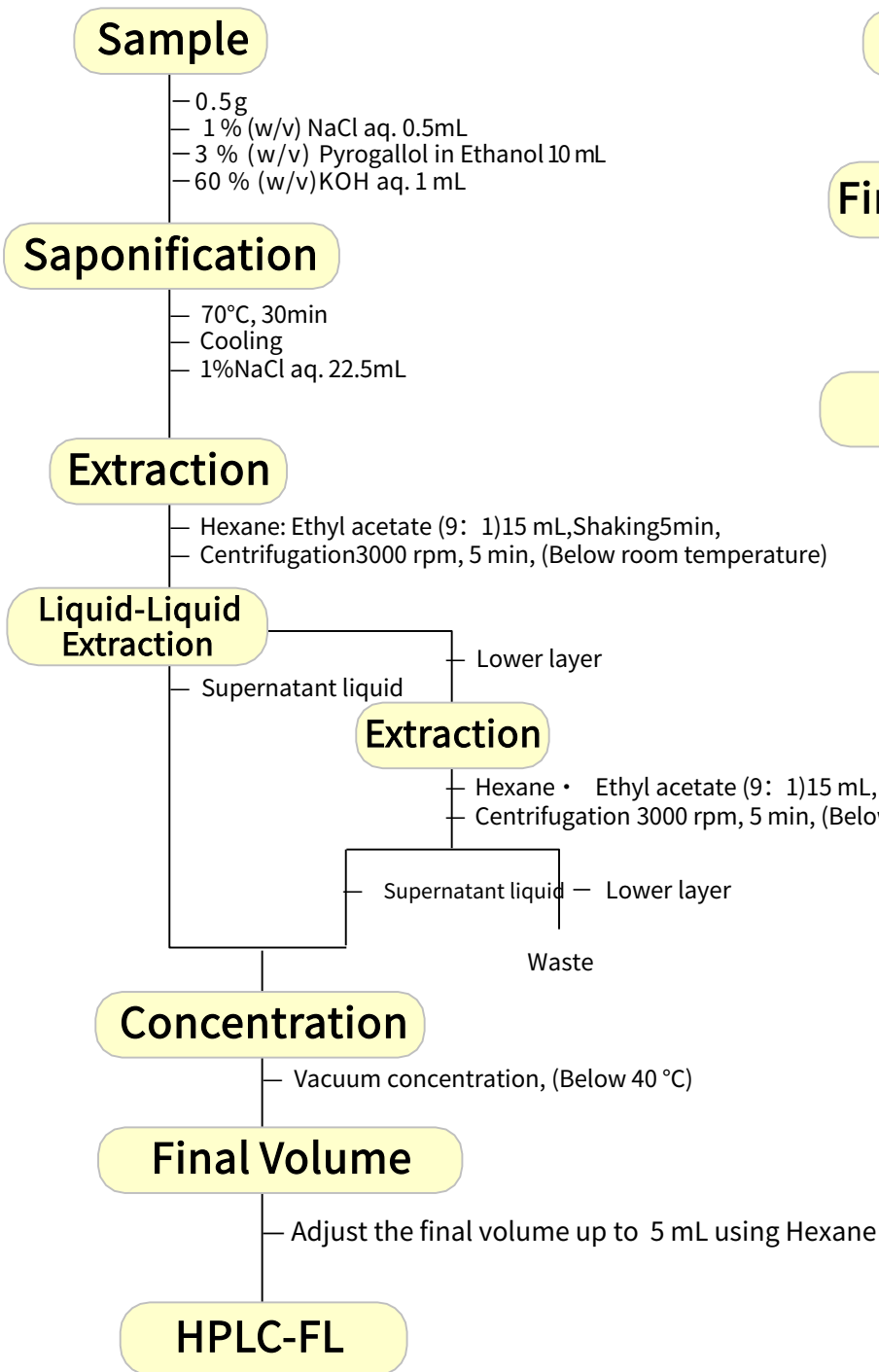
Conditions

Column : Inertsil NH2
 (5 μ m, 250 x 4.6 mm I.D.)
Col. Temp. : 40°C
Detection : FL Ex 298 nm Em 330 nm
Eluent : A) CH₃COOH
 B) 2-Propanol
 C) Hexane
 A/B/C = 5/6/1000, v/v
Flow Rate : 1.2 mL/min
Injection Vol. : 20 μ L

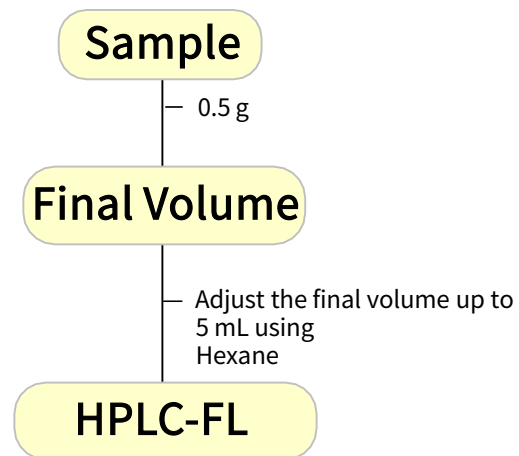


Calibration Curve

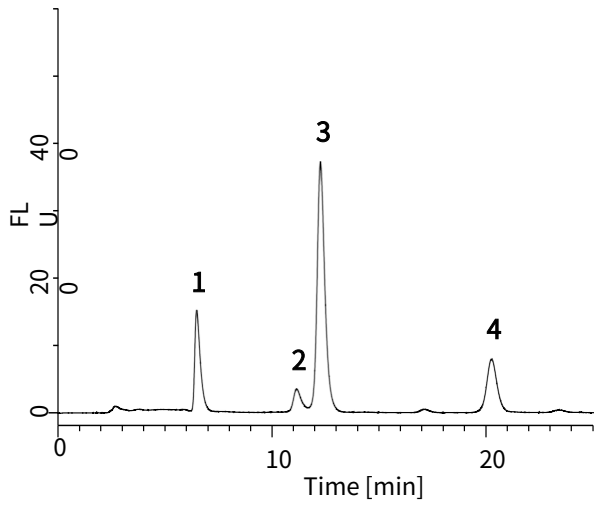
General Foods



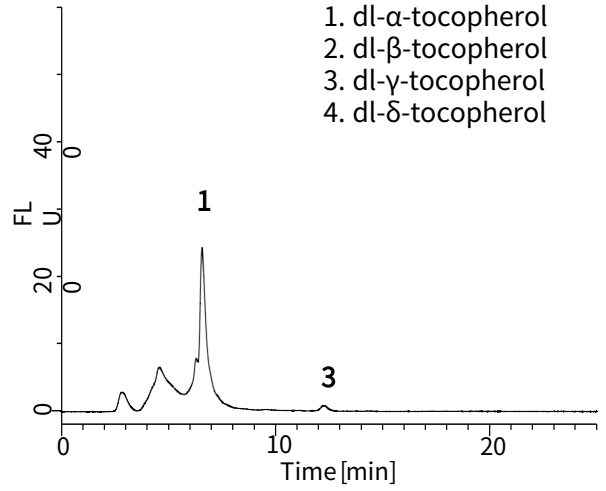
Fat



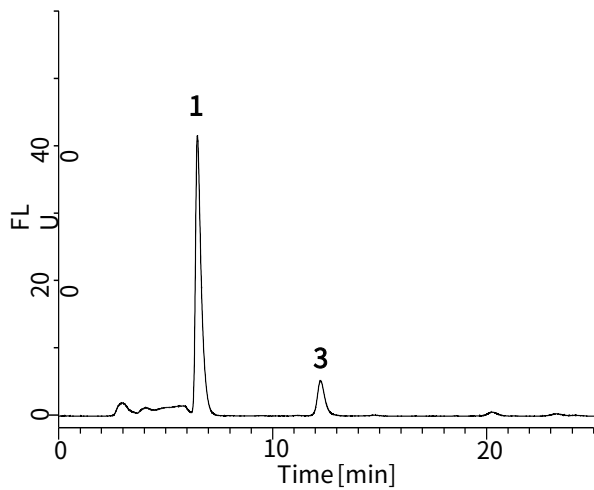
Analysis of Foods



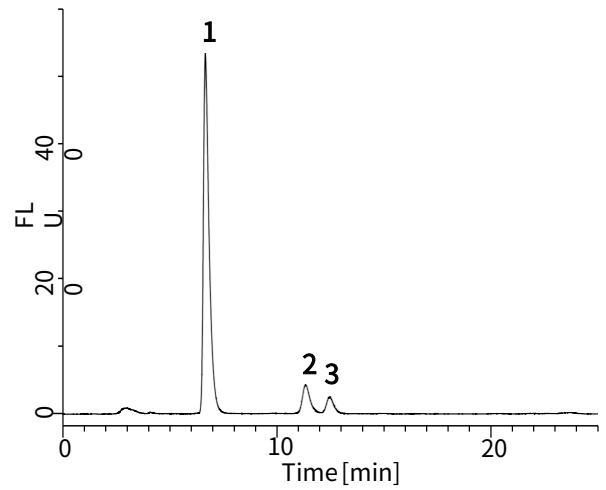
Cooking oil (a 10 times dilution)



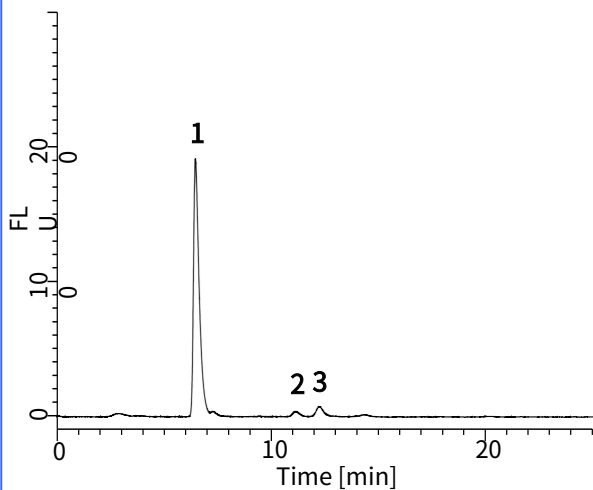
Butter



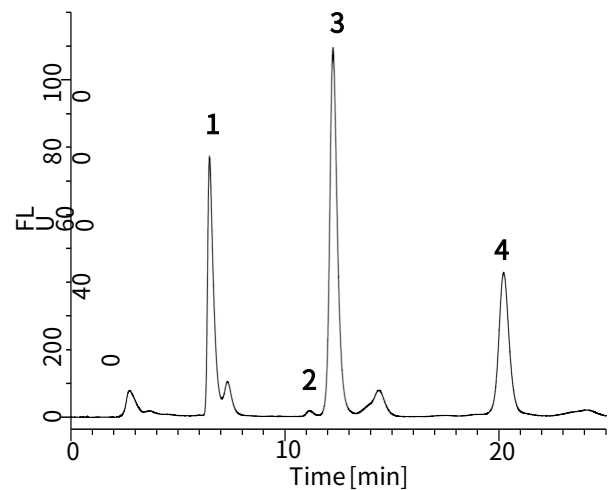
Broiled eel



Mulukhiya



Almond (a 10 times dilution)



Baby formula

GL Sciences disclaims any and all responsibility for any injury or damage which may be caused by this data directly or indirectly. We reserve the right to amend this information or data at any time and without any prior announcement.

GL Sciences Inc. Japan

22-1 Nishishinjuku 6-chome
Shinjuku-ku, Tokyo
163-1130, Japan

Phone: +81-3-5323-6620
Fax: +81-3-5323-6621
Email: world@glsc.co.jp
Web: www.glsciences.com

GL Sciences Inc. USA

4733 Torrance Blvd. Suite 255
Torrance, CA 90503
USA

Phone: +1-310-265-4424
Fax: +1-310-265-4425
Email: info@glsciencesinc.com
Web: www.glsciencesinc.com

GL Sciences B.V.

Dillenburgstraat 7C
5652AM, Eindhoven
The Netherlands

Phone: +31-40-254-9531
Email: info@glsciences.eu
Web: www.glsciences.eu

GL Sciences (Shanghai) Limited

Tower B, Room 2003
Far East International Plaza
No.317 Xianxia Road, Changning District
Shanghai, China 200051

Phone: +86-21-62782272
Email: contact@glsciences.com.cn
Web: www.glsciences.com.cn



International Distributors

Visit our Website at www.glsciences.com/distributors