

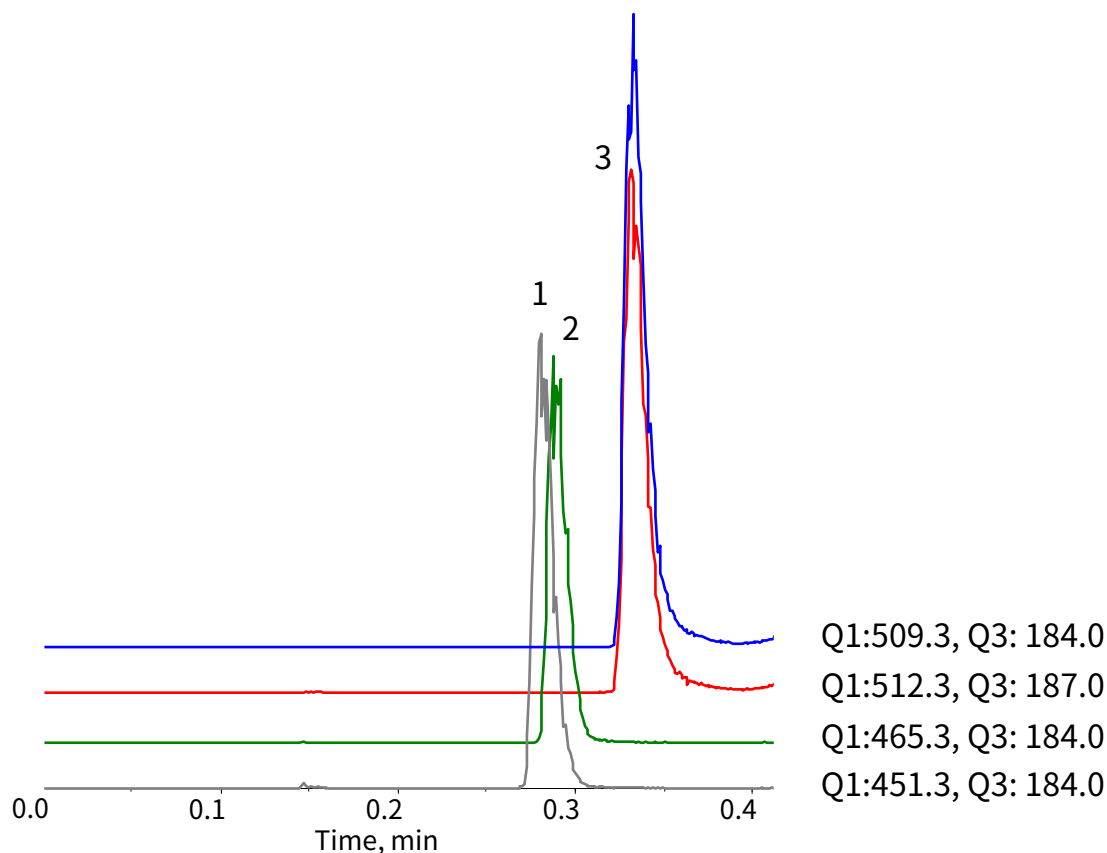
InertSearch™ for LC

Inertsil® Applications

Analysis of Phospholipids

Data No. LL035-0000

The chromatograms were provided by Anna Iwahori, Masamitsu Maekawa, and Nariyasu Mano, Department of Pharmaceutical Sciences, Tohoku University Hospital, 1-1 Seiryō-machi, Aoba-ku, Sendai, Miyagi, 980-8574, Japan



Conditions

Column : MonoSelect C18 for HTS (10 x 2.1 mm I.D.)
Column Cat. No. : 5020-10810
Eluent : A) CH₃CN/Acetone/HCOOH = 50/50/0.1, v/v/v
B) 0.1% HCOOH in H₂O

Time(min)	A (vol%)	B (vol%)
0.0	5	95
0.2	100	0
0.4	100	0

Flow rate : 1.0 mL/min
Col. Temp. : 40 °C
Detection : MS/MS (ESI, Positive, MRM)
Injection Vol. : 1 µL
Sample : Standard (100 ng/mL each)

Analyte:

1. Lysosphingomyelin (d17:1) (Nor-Sphingosylphosphorylcholine)
2. Lysosphingomyelin (d18:1) (Sphingosylphosphorylcholine)
3. *N*-Palmitoyl-*O*-phosphocholine-serine-²H₃
4. *N*-Palmitoyl-*O*-phosphocholine-serine