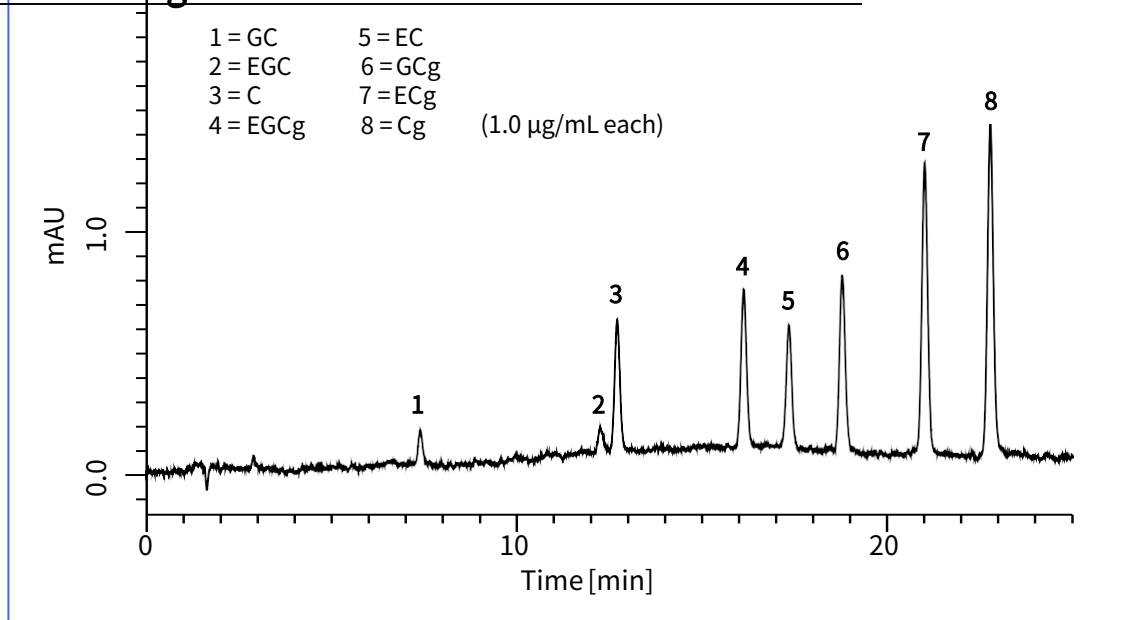


Catechins are antioxidant plant metabolites, which are a type of flavonoid. Recently, many studies reported that catechins provide several health benefits, such as antioxidant effect, reduction in atherosclerotic plaque, and cancer prevention.

This note describes a determination method for catechins. To achieve the separation of eight major catechins (catechin (C), catechin gallate (Cg), epicatechin (EC), epicatechin gallate (ECg), gallic catechin (GC), gallic catechin gallate (GCg), epigallocatechin (EGC), epigallocatechin gallate (EGCg)), 4  $\mu\text{m}$  particle column which offers high separation efficiency

was used. As a result, the catechins in soft drink were successfully separated and determined.

### A chromatogram obtained from standard solution



#### Conditions

· Column	Inertsil ODS-3 (4 $\mu\text{m}$ , 150 x 4.6 mm I.D.) Cat.No. 5020-04645	· Eluent	A) $\text{CH}_3\text{OH}$ B) 10 mM $\text{NaH}_2\text{PO}_4$ (A/B) = (10/90) - 30 min - (50/50), v/v
· Col. Temp.	40 $^\circ\text{C}$	· Flow rate	1.0 mL/min
· Detection	UV 280 nm	· Inj. Vol.	10 $\mu\text{L}$

### The features of Inertsil ODS-3 4 $\mu\text{m}$

- ◆ **Low pressure** : Compared with 3  $\mu\text{m}$  particles, the column pressure is nearly half.
- ◆ **High theoretical plate number**  
: The number of theoretical plates increased by 15% when comparing from a 5  $\mu\text{m}$  column. (100,000 per meter is guaranteed)
- ◆ **Economical** : The column lifetime is long having nearly the same price of 5  $\mu\text{m}$  columns.

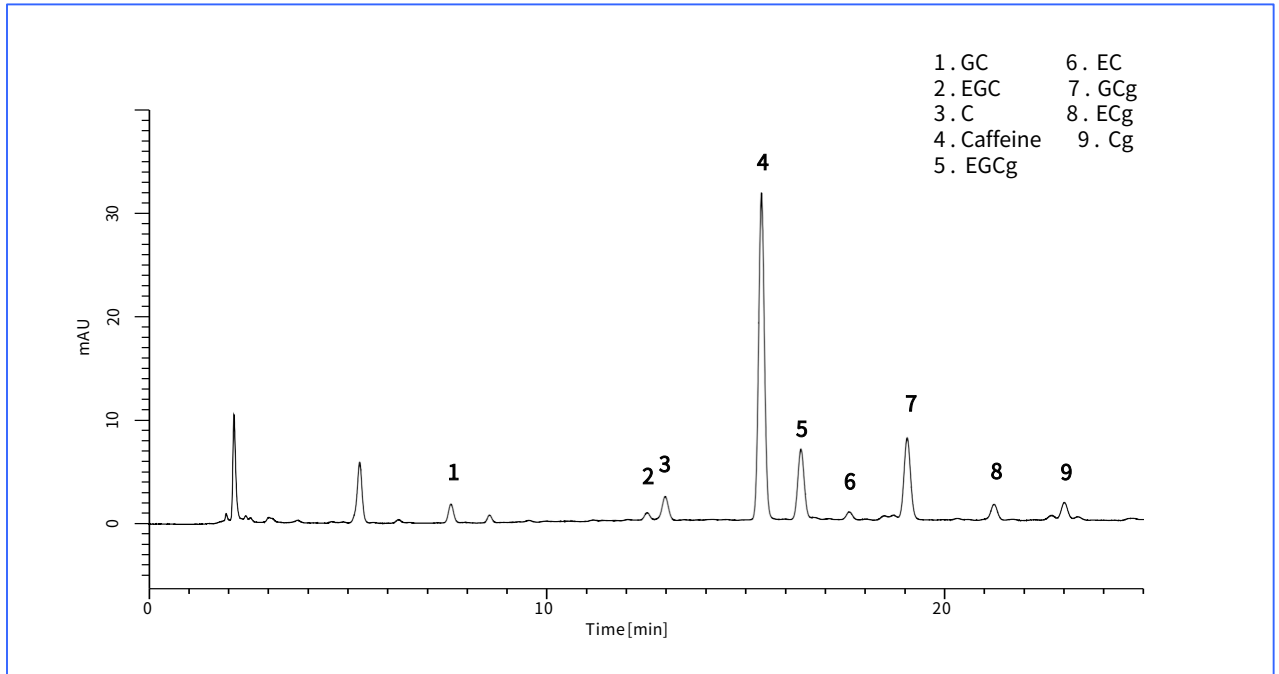
**The 4  $\mu\text{m}$  column offers high separation efficiency with low pressure !!**

# Analyses of catechins and caffeine in soft drink samples

## Green tea in PET bottle

<Sample pretreatment>

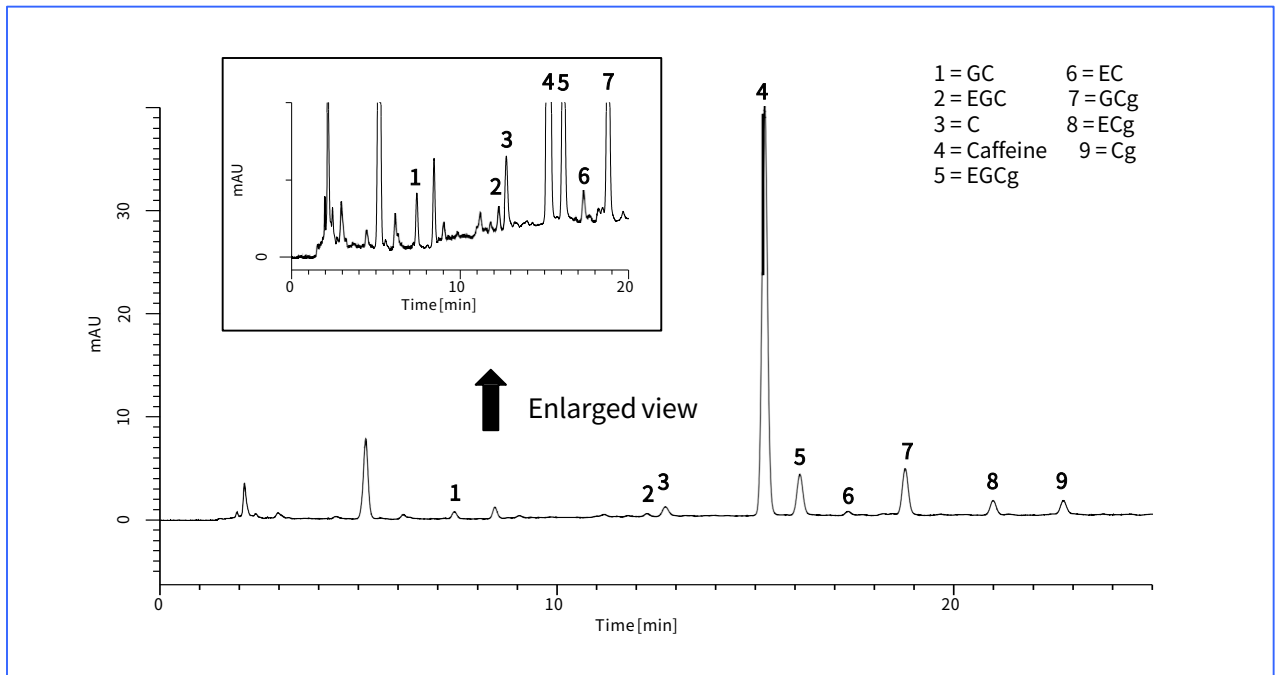
The sample was filtrated with 0.45 μm membrane filter (GL CHROMATO DISK) and 10-fold diluted with water.



## Oolong tea in PET bottle

<Sample pretreatment>

The sample was filtrated with 0.45 μm membrane filter (GL CHROMATO DISK) and 10-fold diluted with water.

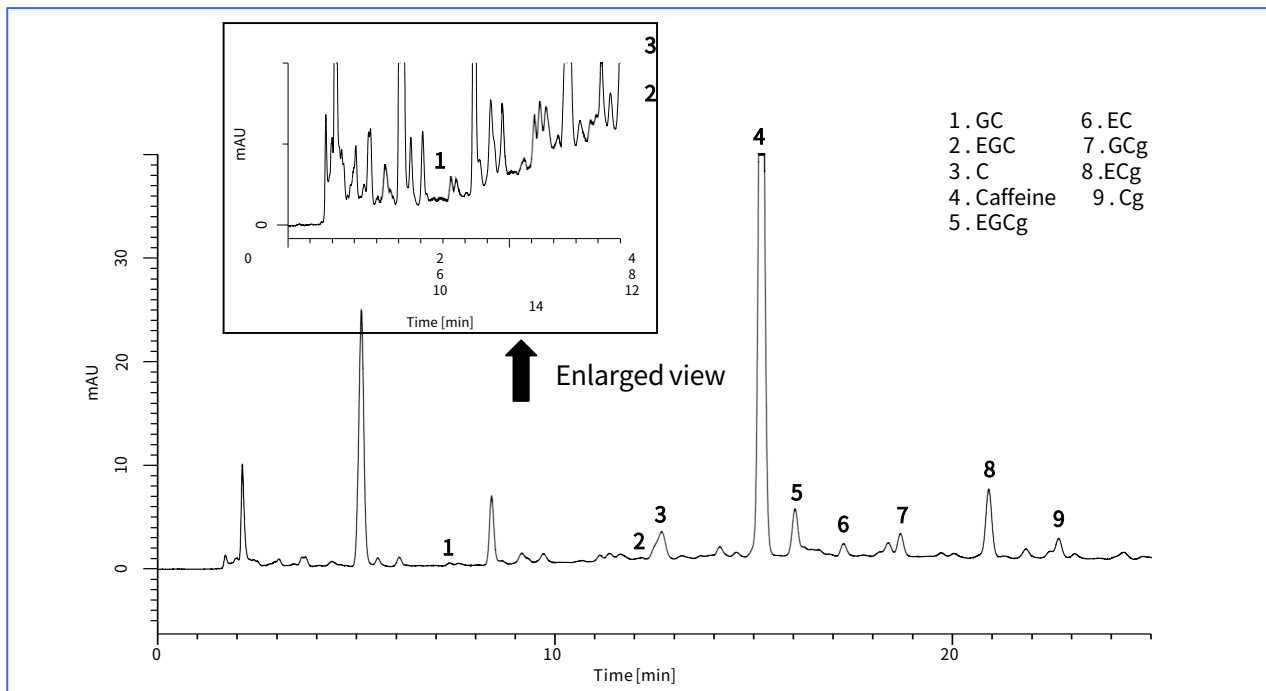


# Analyses of catechins and caffeine in soft drink samples

## Black tea (straight) in PET bottle

<Sample pretreatment>

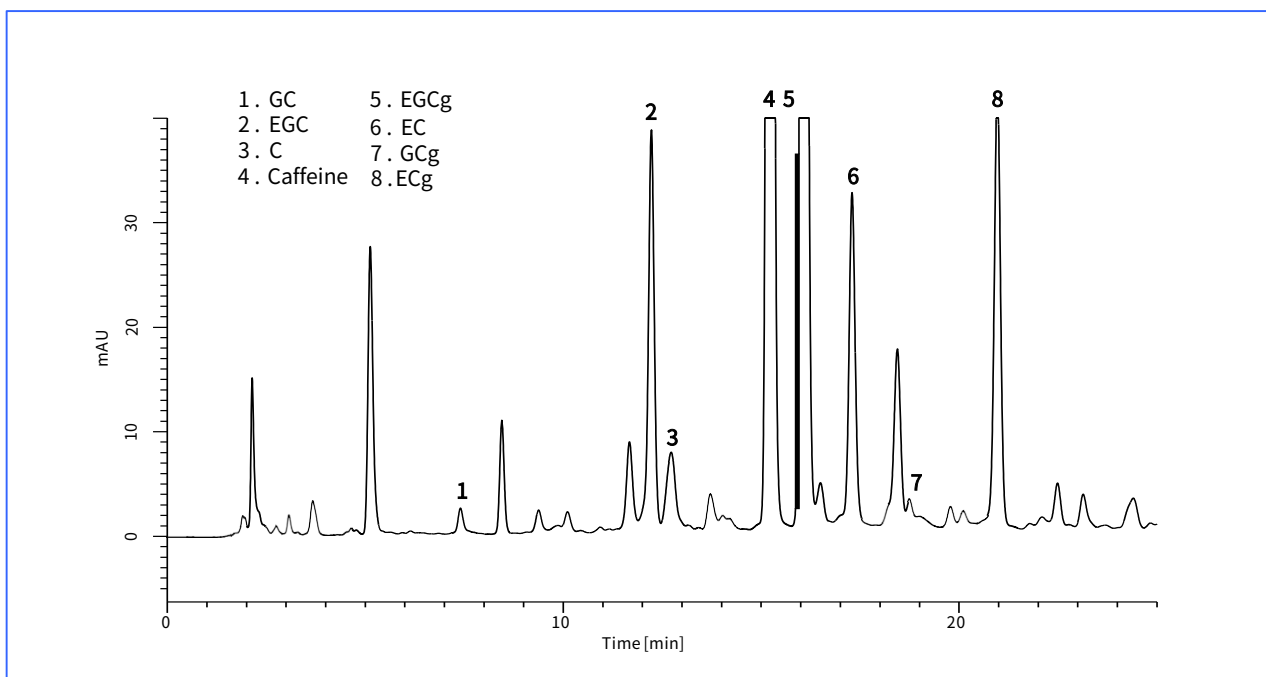
The sample was filtrated with 0.45 µm membrane filter (GL CHROMATO DISK) and 5-fold diluted with water.



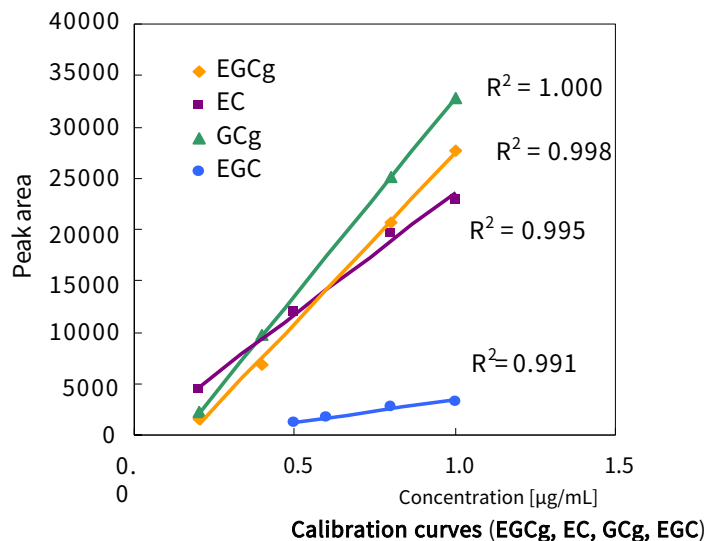
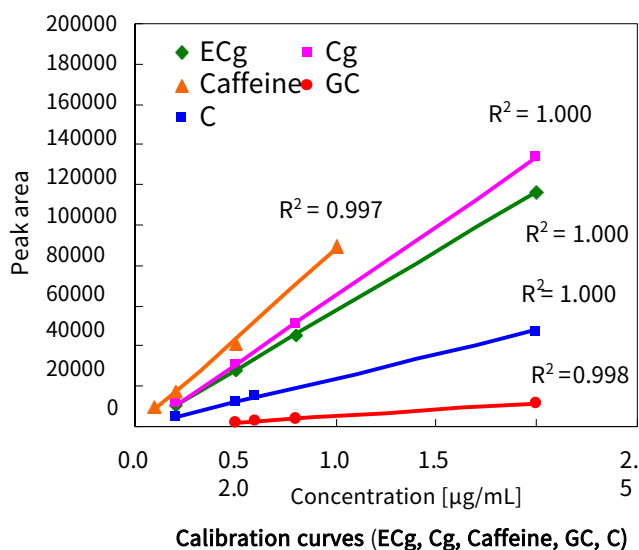
## Extract from tea leaves

<Sample pretreatment>

To 5.0 g of tea leaves, 50 mL of boiled water was added. After waiting for 5.0 min, the solution was filtrated with 0.45 µm membrane filter (GL CHROMATO DISK) and 10-fold diluted with water.



## Calibration curves (8 catechins and caffeine)



GL Sciences disclaims any and all responsibility for any injury or damage which may be caused by this data directly or indirectly. We reserve the right to amend this information or data at any time and without any prior announcement.

### GL Sciences Inc. Japan

22-1 Nishishinjuku 6-chome  
Shinjuku-ku, Tokyo  
163-1130, Japan

Phone: +81-3-5323-6620  
Fax: +81-3-5323-6621  
Email: [world@glsc.co.jp](mailto:world@glsc.co.jp)  
Web: [www.glsciences.com](http://www.glsciences.com)

### GL Sciences Inc. USA

4733 Torrance Blvd. Suite 255  
Torrance, CA 90503  
USA

Phone: +1-310-265-4424  
Fax: +1-310-265-4425  
Email: [info@glsciencesinc.com](mailto:info@glsciencesinc.com)  
Web: [www.glsciencesinc.com](http://www.glsciencesinc.com)

### GL Sciences B.V.

Dillenburgstraat 7C  
5652AM, Eindhoven  
The Netherlands

Phone: +31-40-254-9531  
Email: [info@glsciences.eu](mailto:info@glsciences.eu)  
Web: [www.glsciences.eu](http://www.glsciences.eu)

### GL Sciences (Shanghai) Limited

Tower B, Room 2003  
Far East International Plaza  
No.317 Xianxia Road, Changning District  
Shanghai, China 200051

Phone: +86-21-62782272  
Email: [contact@glsciences.com.cn](mailto:contact@glsciences.com.cn)  
Web: [www.glsciences.com.cn](http://www.glsciences.com.cn)



International Distributors

Visit our Website at [www.glsciences.com/distributors](http://www.glsciences.com/distributors)