

1. Analysis of total vitamin B2

There are riboflavin and riboflavin phosphate esters as components with vitamin B2 activity in food. Here, in accordance with the Guidelines Food Hygiene Inspection, we introduce a method to convert a component having B2 activity into riboflavin by enzymatic degradation and measure it as riboflavin..

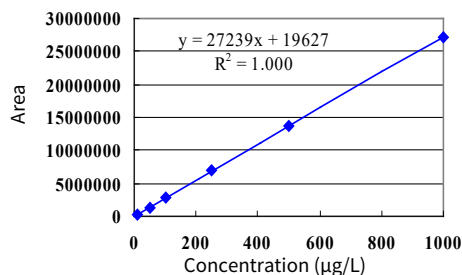
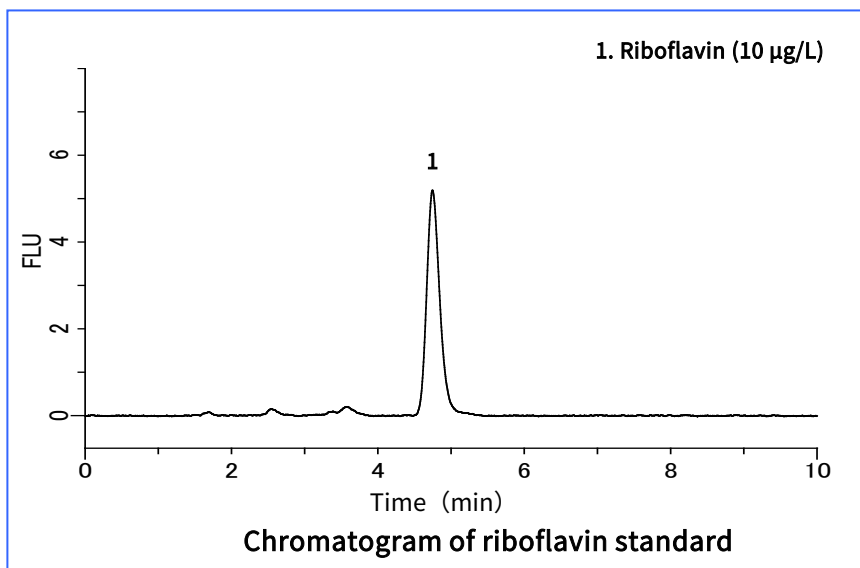


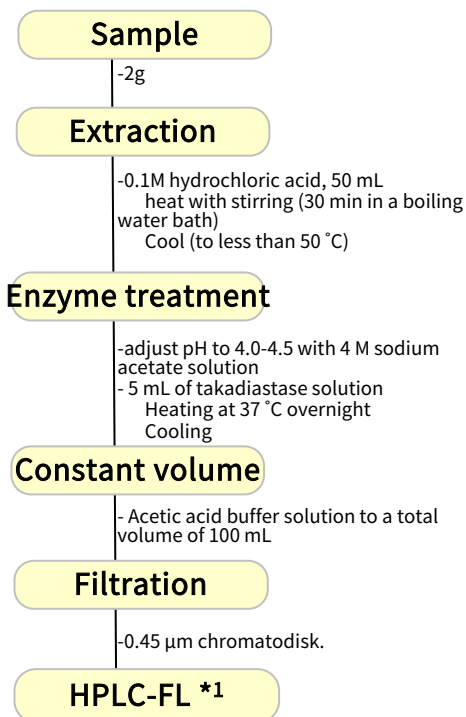
Fig. Riboflavin calibration curve

HPLC conditions

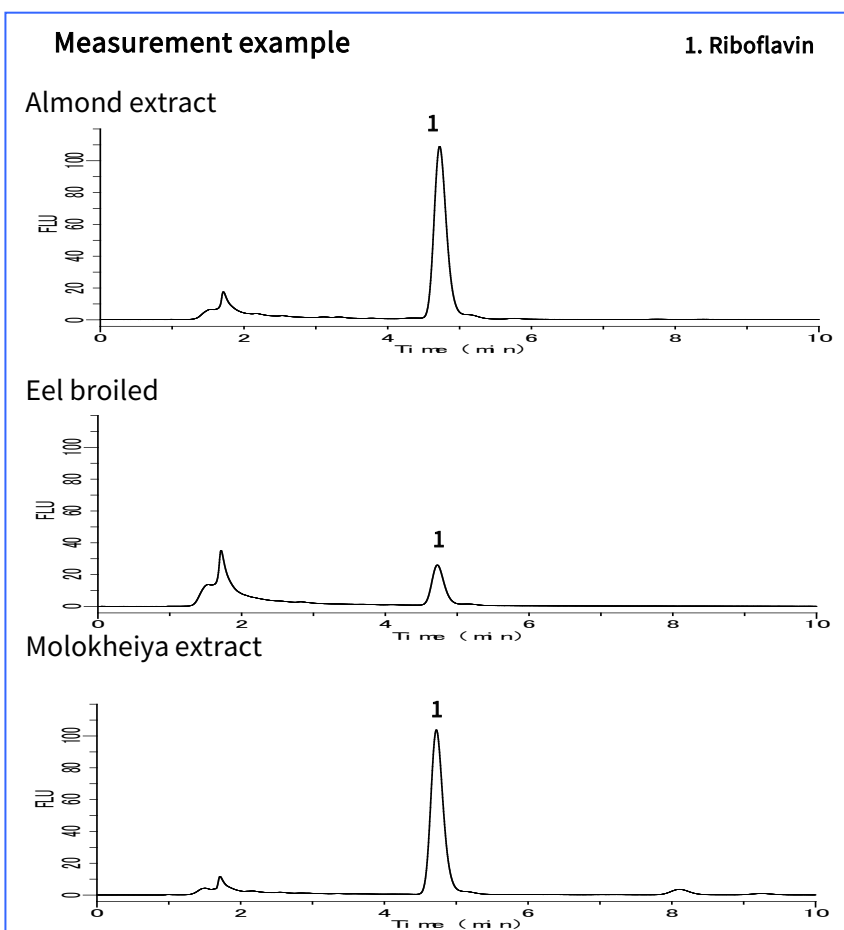
Column :Inertsil ODS-3
(5 µm, 150 x 4.6 mm I.D.)
Temperature :40 °C
Detector :FL Ex 445 nm Em 530 nm
Injection volume :20 µL
Eluent : A) CH₃OH B) Acetic Acid Buffer
A/B = 35/65, v/v
Flow rate : 1.0 mL/min
Acetic Acid Buffer :

Mix 40 mL of 4 M sodium acetate solution and 20 mL of 50% acetic acid solution. Dissolve in 2 L of ultrapure water (pH 4.5)

Example of pretreatment



*1 Because vitamin B2 is present at trace levels in common foods, Sensitive analysis with a fluorescence detector is required.



2. Simultaneous Analysis of Riboflavin and Riboflavin Phosphate Esters

Riboflavin (RF) binds to phosphate and ATP in cells to form flavin adenine dinucleotide (FAD) and flavin mononucleotide (FMN). Photodegradation also results in lumiflavin (LF). Here, a simultaneous analysis of the four vitamin B2 components (including riboflavin) was made.

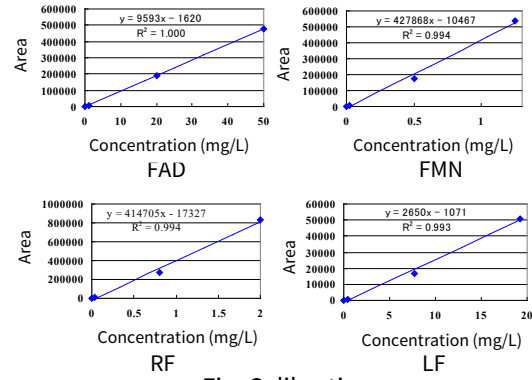
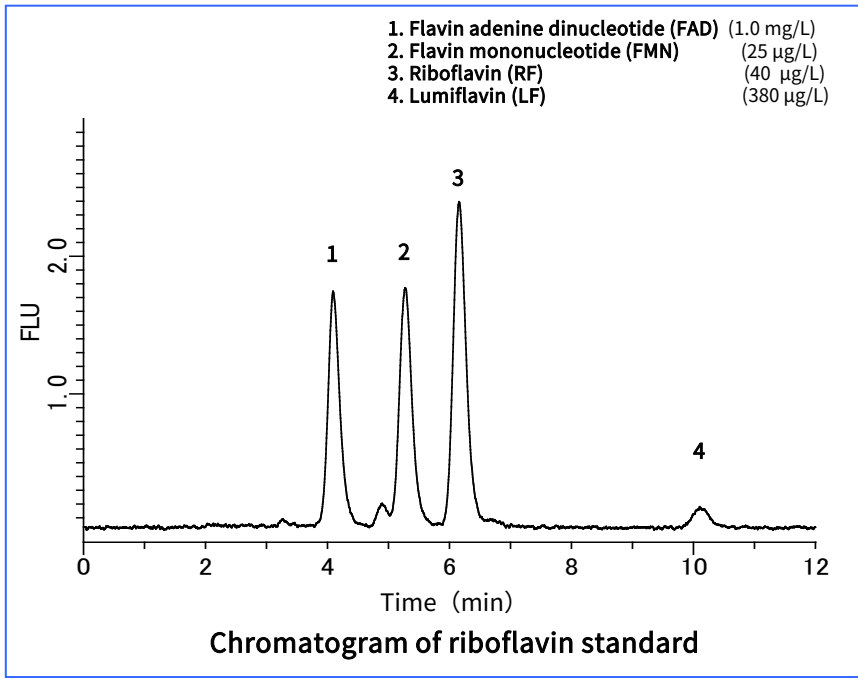
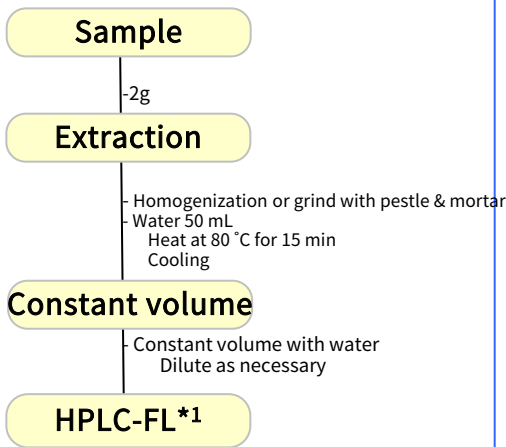


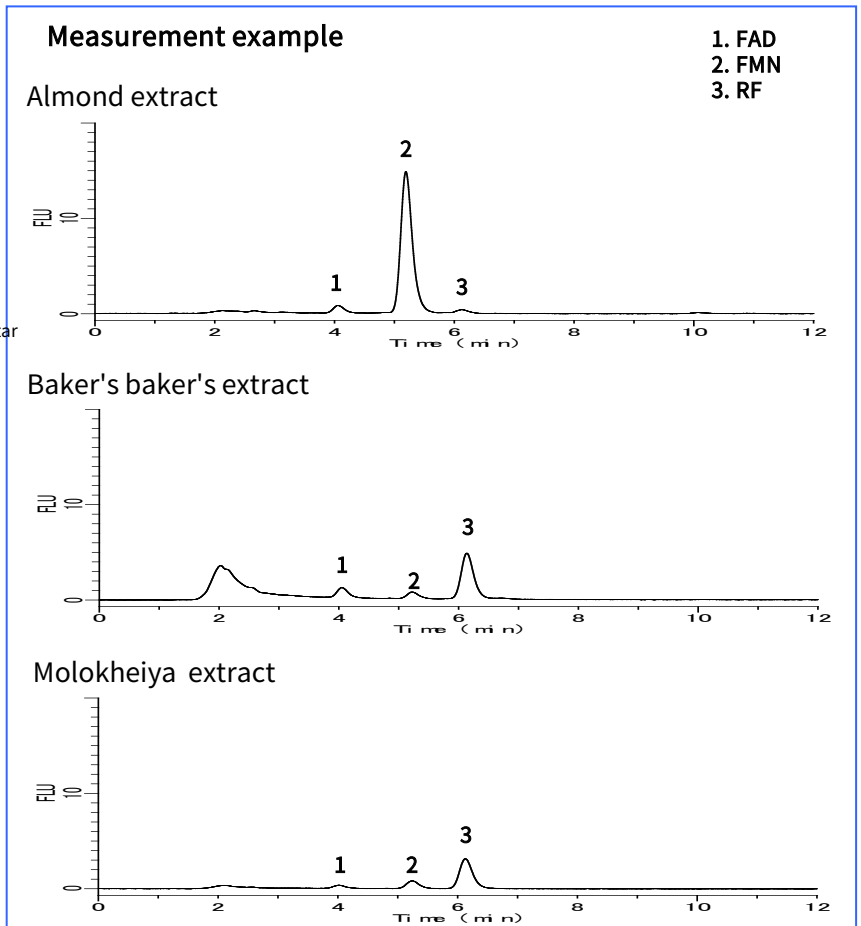
Fig. Calibration curves

HPLC conditions
Column : Inertsil ODS-3 (5 µm, 150 x 4.6 mm I.D.)
Temperature : 40 °C
Detector : FL Ex 445 nm Em 530 nm
Injection volume : 20 µL
Eluent : A) CH₃OH B) 0.01M NaH₂PO₄ (pH 5.5) A/B = 35/65, v/v
Flow rate : 0.8 mL/min
 (Reference: New Food Analytical Procedure P. 392 ISBN 4-7712-9604-9)

Example of pretreatment



*1 Because vitamin B2 is present at trace levels in common foods, Sensitive analysis with a fluorescence detector is required.



3. Analysis of riboflavin butyrate

Riboflavin tetrabutryate that is Riboflavin Butyrate is a fat-soluble vitamin B2 and is added to supplements and nutritional drinks to improve cholesterol.

In this section Riboflavin tetrabutryate was analyzed according to the reference method in the Guidelines Food Hygiene Inspection.

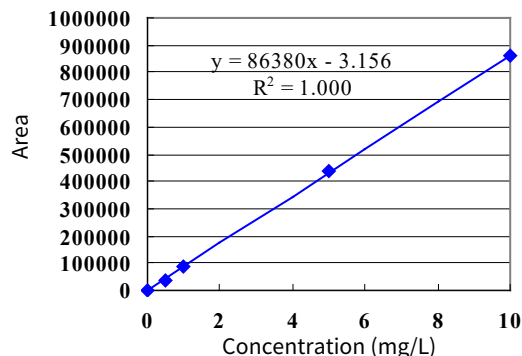
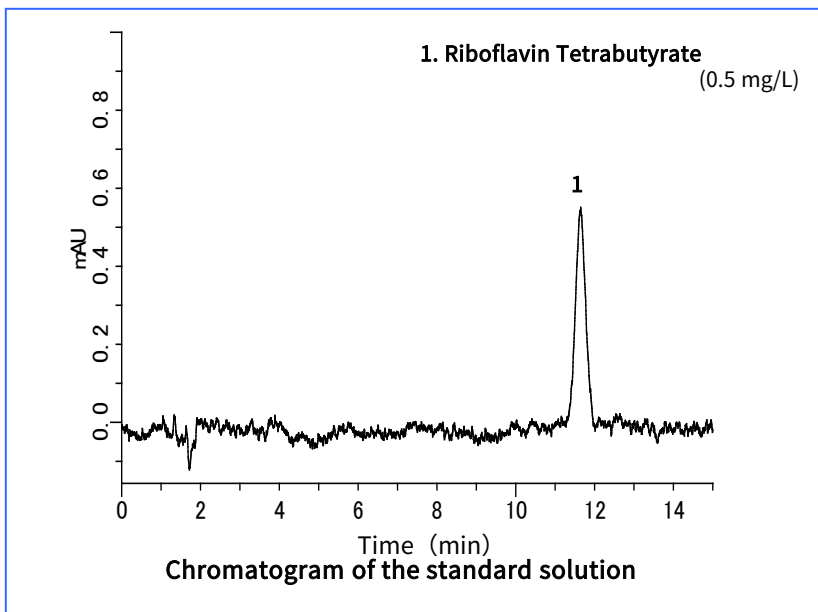


Fig. Riboflavin tetrabutryate calibration curve

HPLC conditions

Column : Inertsil ODS-3
(5 μ m, 150 x 4.6 mm I.D.)

Temperature : 40 °C

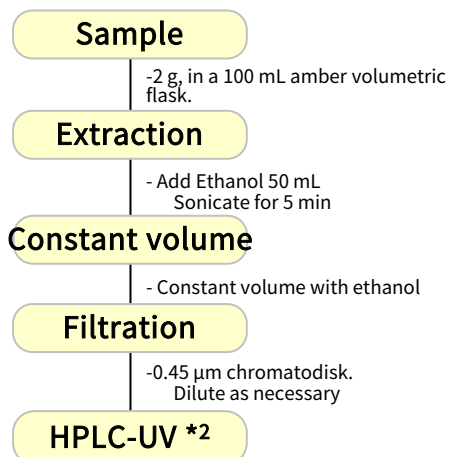
Detector : UV 445 nm

Injection volume : 20 μ L

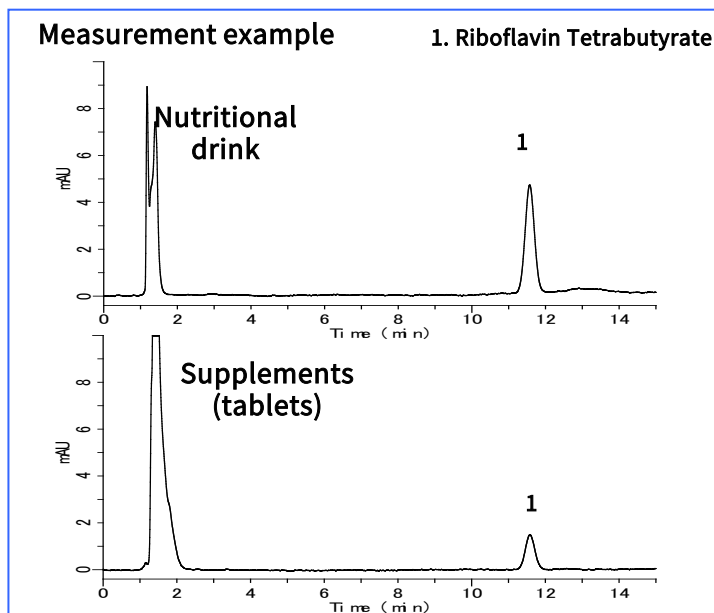
Eluent : A) CH₃CN B) H₂O
A/B = 3/2, v/v

Flow rate : 1.0 mL/min

Example of pretreatment



*2 Riboflavin butyrate is often added in high concentrations to supplements, Assay with UV detector is possible.



GL Sciences disclaims any and all responsibility for any injury or damage which may be caused by this data directly or indirectly. We reserve the right to amend this information or data at any time and without any prior announcement.

GL Sciences Inc. Japan

22-1 Nishishinjuku 6-chome
Shinjuku-ku, Tokyo
163-1130, Japan

Phone: +81-3-5323-6620
Fax: +81-3-5323-6621
Email: world@glsc.co.jp
Web: www.glsciences.com

GL Sciences Inc. USA

4733 Torrance Blvd. Suite 255
Torrance, CA 90503
USA

Phone: +1-310-265-4424
Fax: +1-310-265-4425
Email: info@glsciencesinc.com
Web: www.glsciencesinc.com

GL Sciences B.V.

Dillenburgstraat 7C
5652AM, Eindhoven
The Netherlands

Phone: +31-40-254-9531
Email: info@glsciences.eu
Web: www.glsciences.eu

GL Sciences (Shanghai) Limited

Tower B, Room 2003
Far East International Plaza
No.317 Xianxia Road, Changning District
Shanghai, China 200051

Phone: +86-21-62782272
Email: contact@glsciences.com.cn
Web: www.glsciences.com.cn



International Distributors

Visit our Website at www.glsciences.com/distributors