

This note describes a determination method for water-soluble vitamins using an electrochemical detector (ECD).

Analysis of water-soluble vitamins are generally performed using UV detection coupled with reversed-phase HPLC.

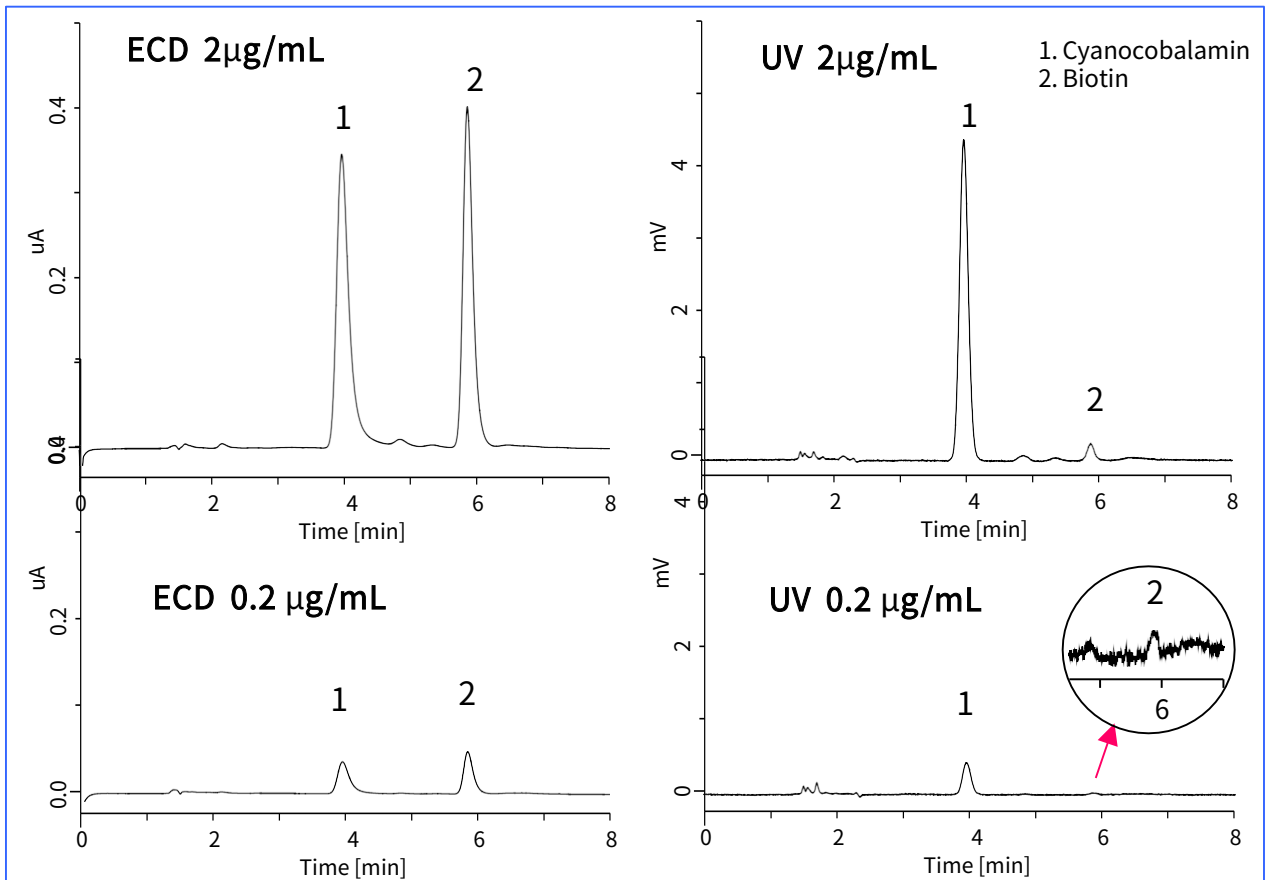
However, sensitive determination of some vitamins [e.g. biotin (Vitamin B₇)] with HPLC-UV system is difficult, because their response to UV detector is very weak. In such case, ECD is a powerful alternative to UV detector. Biotin can be detected

with high sensitivity as well as cyanocobalamin because both are electrochemically reactive species.

ED703 pulse is an ECD equipped with boron-doped diamond electrode. The diamond working electrode offers stable response, low background current and wide potential window. ED703 pulse is very useful to quantify various compounds.

(T.Tamura)

Comparison of the sensitivity: ECD vs. UV detector



Conditions

Column : Inertsil ODS-SP
(5µm, 150 x 4.6 mm I.D.)
Cat.No. 5020-02745

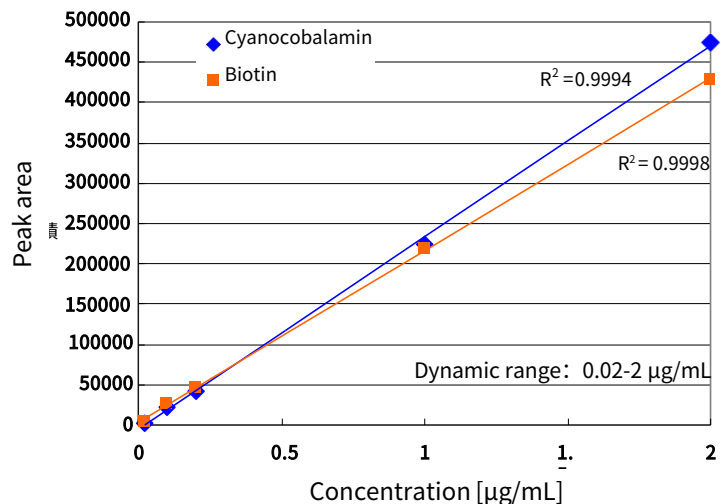
Eluent : A) CH₃CN
B) H₂O(0.1 % H₃PO₄)
A/B = 18/82, v/v
(gradient mixer)

Flow rate : 1.0 mL/min

Col. Temp. : 40 °C

Detection : ECD 1600 mV vs. Ag/AgCl
(Boron-doped diamond electrode) UV 220 nm

Inj. Vol. : 10 µL

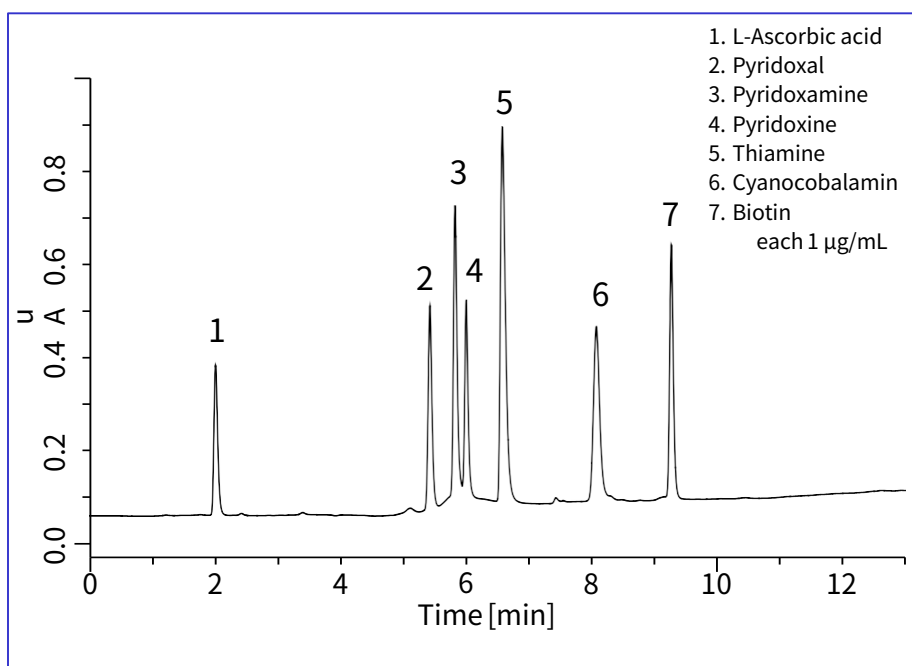


An analysis of water-soluble vitamins with gradient elution

Conditions

Column : Inertsil ODS-3
(5 μm , 150 x 4.6 mm I.D.)
Cat.No. 5020-01731

Eluent : A) CH_3CN (0.1% H_3PO_4)
+ 5 mM IPCC-05* B) H_2O (0.1%
 H_3PO_4)
+ 5 mM IPCC-05
A/B = 5/95 – (12 min) – 40/60
* IPCC-05: $\text{C}_5\text{H}_{11}\text{SO}_3\text{Na}$
Flow rate : 1.0 mL/min
Column Temperature
: 40 $^\circ\text{C}$
Detection : ECD 1600 mV vs.
Ag/AgCl (Boron-doped
diamond electrode)
Inj. Vol. : 10 μL



GL Sciences disclaims any and all responsibility for any injury or damage which may be caused by this data directly or indirectly. We reserve the right to amend this information or data at any time and without any prior announcement.

GL Sciences Inc. Japan

22-1 Nishishinjuku 6-chome
Shinjuku-ku, Tokyo
163-1130, Japan

Phone: +81-3-5323-6620
Fax: +81-3-5323-6621
Email: world@glsc.co.jp
Web: www.glsciences.com

GL Sciences Inc. USA

4733 Torrance Blvd. Suite 255
Torrance, CA 90503
USA

Phone: +1-310-265-4424
Fax: +1-310-265-4425
Email: info@glsciencesinc.com
Web: www.glsciencesinc.com

GL Sciences B.V.

Dillenburgstraat 7C
5652AM, Eindhoven
The Netherlands

Phone: +31-40-254-9531
Email: info@glsciences.eu
Web: www.glsciences.eu

GL Sciences (Shanghai) Limited

Tower B, Room 2003
Far East International Plaza
No.317 Xianxia Road, Changning District
Shanghai, China 200051

Phone: +86-21-62782272
Email: contact@glsciences.com.cn
Web: www.glsciences.com.cn



International Distributors

Visit our Website at www.glsciences.com/distributors