

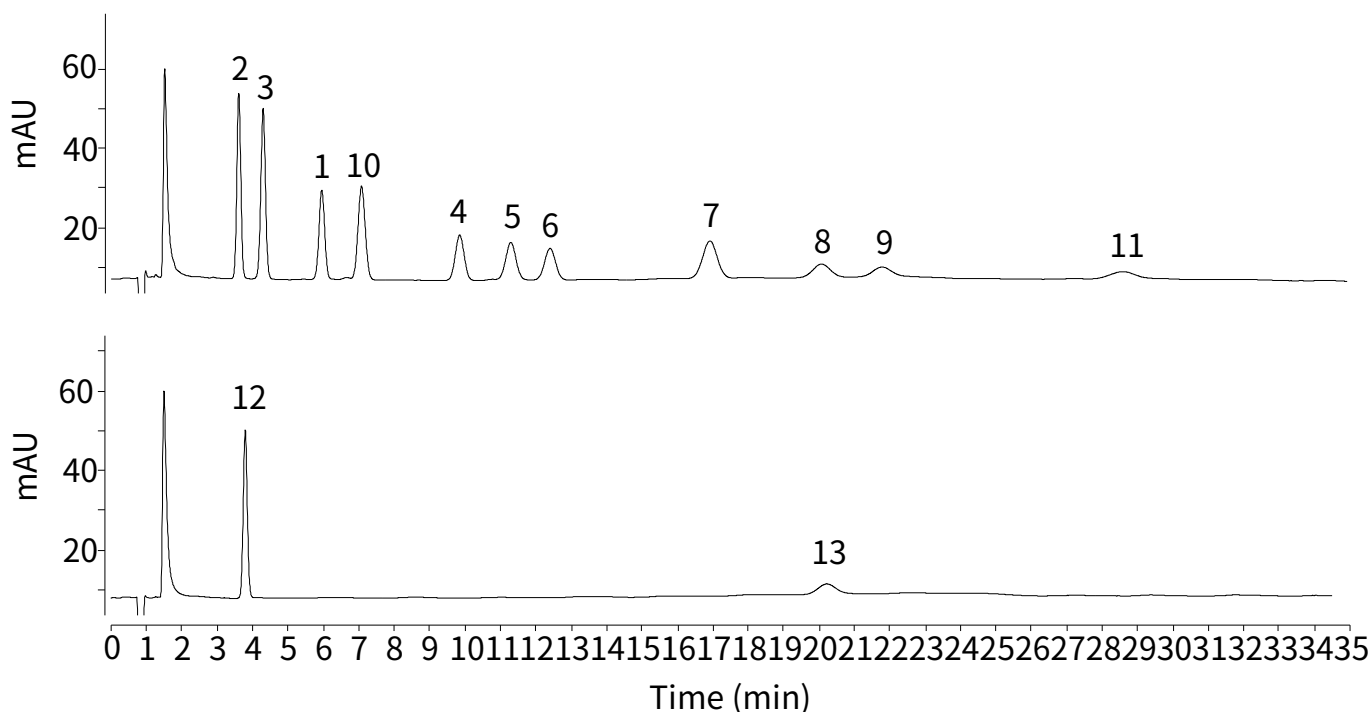
InertSearch™ for LC

Inertsil® Applications

Analysis of Cannabinoids

Data No. LL040-0000

*The chromatogram was provided by Prof. Akira Namera,
Department of Forensic Medicine, Graduate School of Biomedical and Health Sciences,
Hiroshima University,
Kasumi 1-2-3 Minami-ku, Hiroshima, 734-8551, Japan*



Conditions

Column : InertSustain Phenylhexyl (GL Sciences Inc.)
(3 μ m, 100 x 2.1 mm I.D.)

Column Cat. No. : 5020-89127

Eluent : A) CH₃OH
: B) 10 mM HCOONH₄ in H₂O (pH 6.3)
: A/B = 70/30, v/v

Flow rate : 0.3 mL/min

Col. Temp. : 40 °C

Detection : UV 220 nm

Injection Vol. : 5 μ L

Sample : Standard

Analyte:

1. Cannabidiol (CBDV)
2. Cannabidiolic acid (CBDA)
3. Cannabigerolic acid (CBGA)
4. Cannabigerol (CBG)
5. Cannabidiol (CBD)
6. Tetrahydrocannabivarin (THCV)
7. Cannabinol (CBN)
8. *Delta*-9-Tetrahydrocannabinol (Δ^9 -THC)
9. *Delta*-8-Tetrahydrocannabinol (Δ^8 -THC)
10. Tetrahydrocannabinolic acid (THCA)
11. Cannabichromene (CBC)
12. Tetrahydrocannabivarinic acid (THCVA)
13. Cannabicyclol (CBL)
(1 μ g/mL each)