

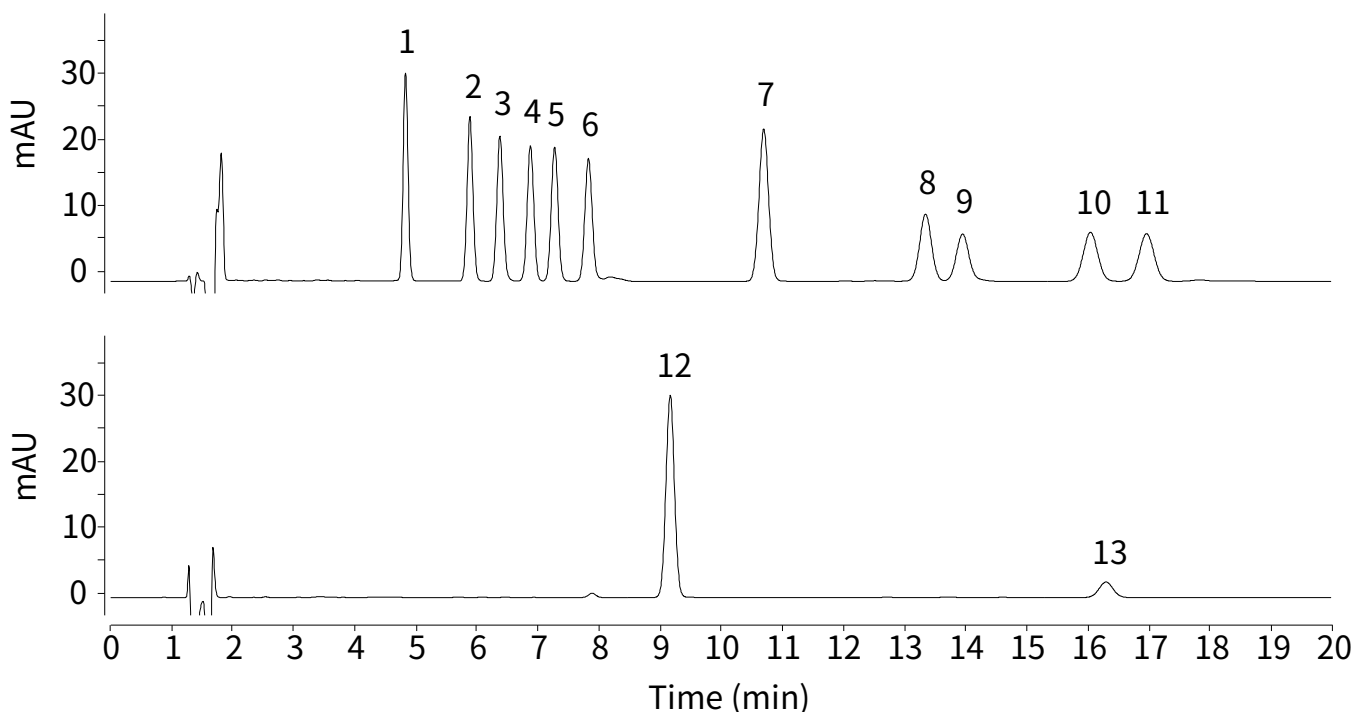
InertSearch™ for LC

Inertsil® Applications

Analysis of Cannabinoids

Data No. LL037-0000

*The chromatogram was provided by Prof. Akira Namera,
Department of Forensic Medicine, Graduate School of Biomedical and Health Sciences,
Hiroshima University,
Kasumi 1-2-3 Minami-ku, Hiroshima, 734-8551, Japan*



Conditions

Column : InertSustain C18 (GL Sciences Inc.)
(3 μ m, 150 x 2.1 mm I.D.)
Column Cat. No. : 5020-07415
Eluent : A) 0.1 % HCOOH in CH₃CN
: B) (10 mM HCOONH₄ + 0.1 % HCOOH) in H₂O (pH 3.3)
: A/B = 75/25, v/v
Flow rate : 0.2 mL/min
Col. Temp. : 40 °C
Detection : UV 220 nm
Injection Vol. : 5 μ L
Sample : Standard

Analyte:

1. Cannabidivarin (CBDV)
2. Cannabidiolic acid (CBDA)
3. Cannabigerolic acid (CBGA)
4. Cannabigerol (CBG)
5. Cannabidiol (CBD)
6. Tetrahydrocannabinavarin (THCV)
7. Cannabinol (CBN)
8. *Delta*-9-Tetrahydrocannabinol (Δ^9 -THC)
9. *Delta*-8-Tetrahydrocannabinol (Δ^8 -THC)
10. Tetrahydrocannabinolic acid (THCA)
11. Cannabichromene (CBC)
12. Tetrahydrocannabivarinic acid (THCVA)
13. Cannabicyclol (CBL)

(1 μ g/mL each)