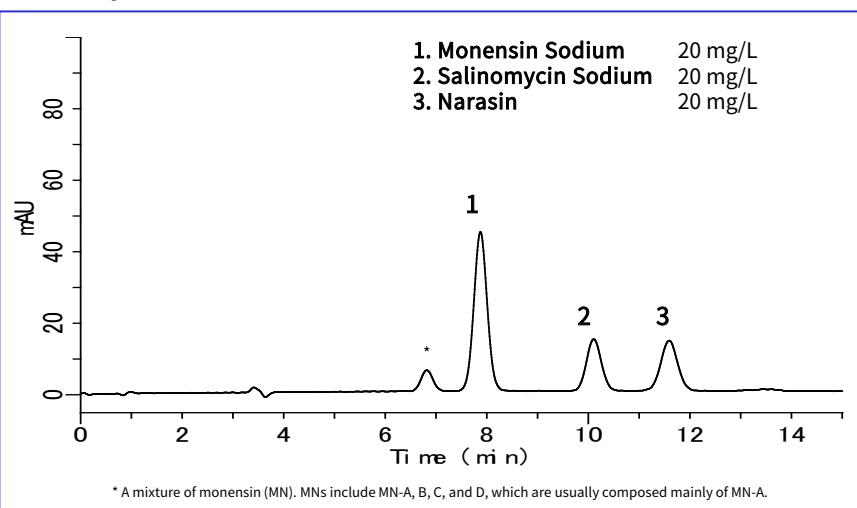


In accordance with the provisions of the Law for Ensuring the Safety of Feed and Improving the Quality of Feed for Animals, the Feed Inspection Method is compiled into Feed Inspection Practice. The test used in this protocol is stipulated in the “Feed Analysis Standards”. The present analysis was made for monensin sodium, salinomycin sodium, and narasin using a post-column HPLC method with visible detection, in accordance with the feed analytical standards.

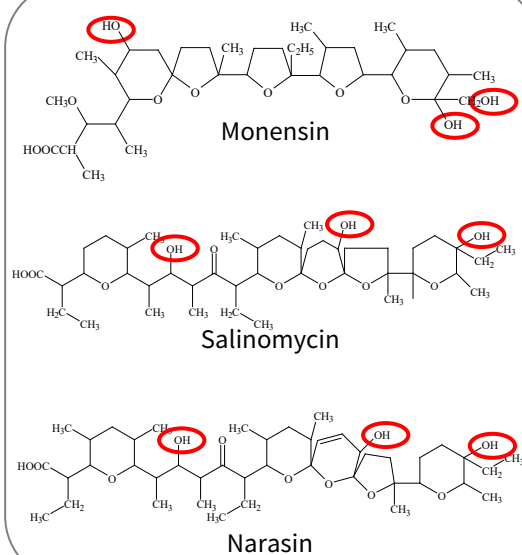
The use of a post-column HPLC enables selective detection with excellent results. It also allows simultaneous analysis of a similar polyether antibiotic, centuramycin sodium.

(K. Suzuki)

Example: Measurement of standard

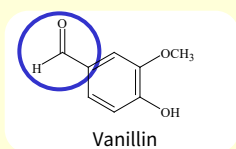


Structural formula

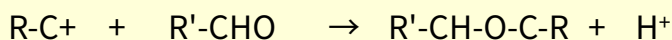
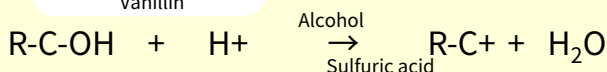


Postcolumn reaction

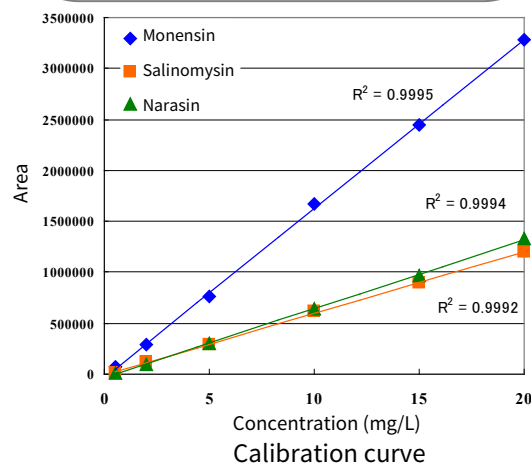
In this post-column reaction, the aldehyde group of vanillin reacts with a hydroxyl group in the component of interest. An Aldol condensation produces derivatives with maximum absorption in the region of 520 nm.



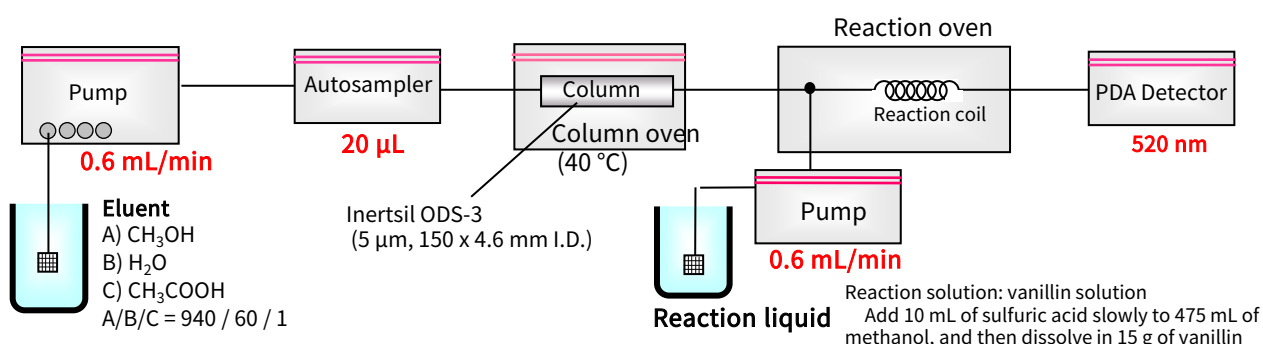
(Komarowsky response).



Structures are created using Chemistry 4-D Draw which is provided by ChemInnovation Software, Inc.



Flow diagram and HPLC conditions



Measurement example

Example of pretreatment

Feed

- 5.0 g
- Grind

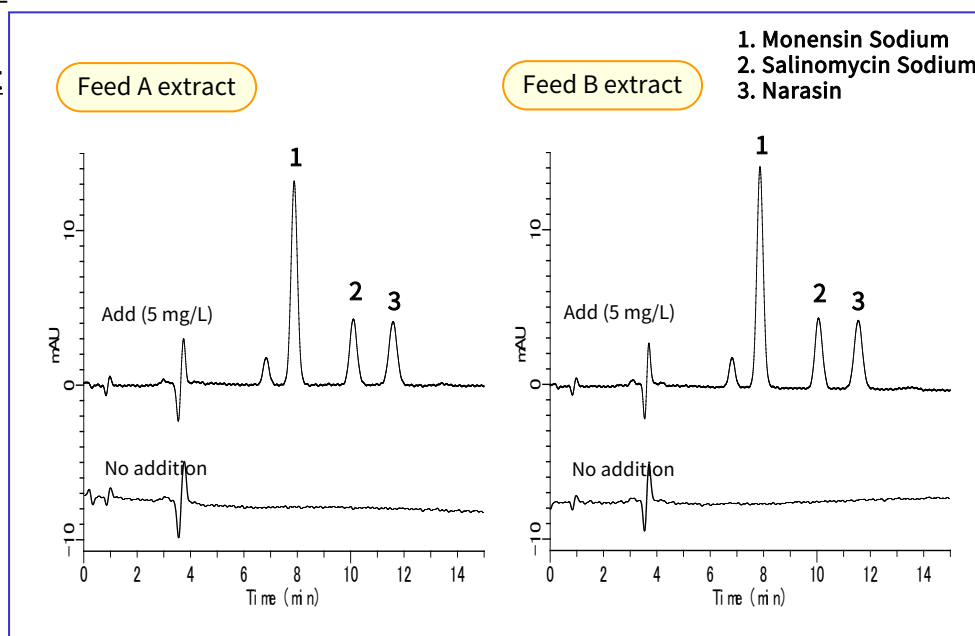
Extraction

- Methanol/Water (9:1) 100 mL
- Stir for 20 min.

Filtration

- Filtration
- Dilute the filtrate to 100 mL.
- Filter through 0.45 µm chromatography disk.

HPLC



GL Sciences disclaims any and all responsibility for any injury or damage which may be caused by this data directly or indirectly. We reserve the right to amend this information or data at any time and without any prior announcement.

GL Sciences Inc. Japan

22-1 Nishishinjuku 6-chome
 Shinjuku-ku, Tokyo
 163-1130, Japan

Phone: +81-3-5323-6620
 Fax: +81-3-5323-6621
 Email: world@glsc.co.jp
 Web: www.glsciences.com

GL Sciences Inc. USA

4733 Torrance Blvd. Suite 255
 Torrance, CA 90503
 USA

Phone: +1-310-265-4424
 Fax: +1-310-265-4425
 Email: info@glsciencesinc.com
 Web: www.glsciencesinc.com

GL Sciences B.V.

Dillenburgstraat 7C
 5652AM, Eindhoven
 The Netherlands

Phone: +31-40-254-9531
 Email: info@glsciences.eu
 Web: www.glsciences.eu

GL Sciences (Shanghai) Limited

Tower B, Room 2003
 Far East International Plaza
 No.317 Xianxia Road, Changning District
 Shanghai, China 200051

Phone: +86-21-62782272
 Email: contact@glsciences.com.cn
 Web: www.glsciences.com.cn



International Distributors

Visit our Website at www.glsciences.com/distributors