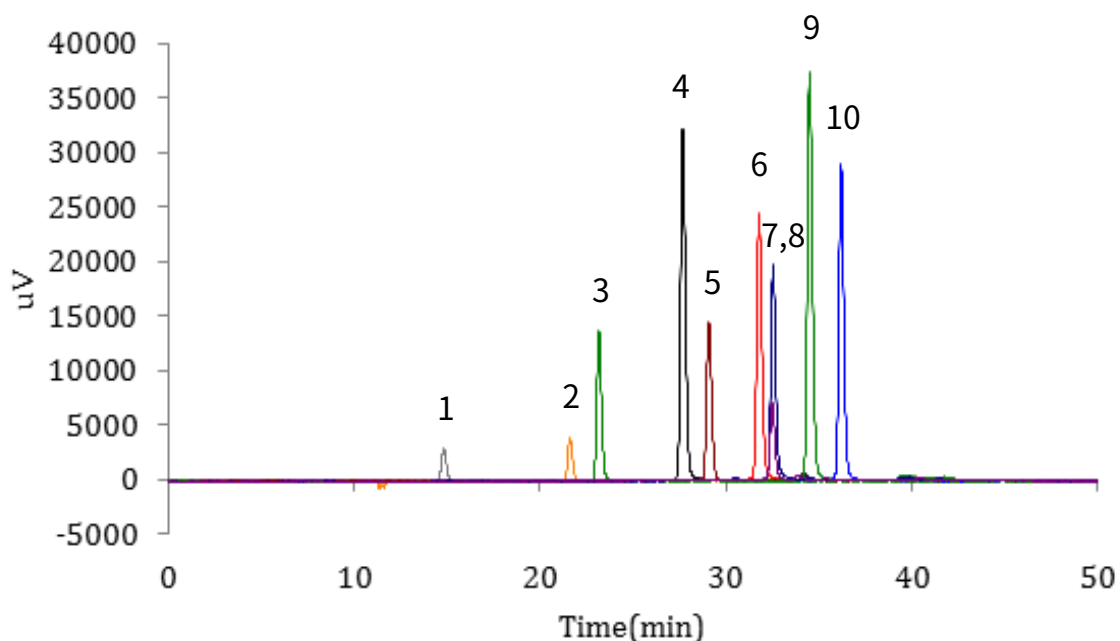


## Analysis of Catechins

Data No. LL022-0000

*The chromatogram was provided by Assoc. prof. Shigeki Yoshida,  
Faculty of Life and Environmental Sciences, University of Tsukuba,  
1-1-1 Tennodai, Tsukuba, Ibaraki 305-8572, Japan*



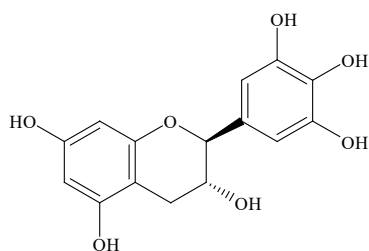
### Conditions

**Column** : InertSustain C18  
(5  $\mu$ m, 250 x 4.6 mm I.D.)  
**Column Cat. No.** : 5020-07346  
**Eluent** : A) CH<sub>3</sub>OH  
B) H<sub>2</sub>O  
A/B = 10/90 - 40 min - 50/50, v/v  
**Flow rate** : 0.8 mL/min  
**Col. Temp.** : 25 °C  
**Detection** : UV 280 nm  
**Injection Vol.** : 10  $\mu$ L  
**Sample** : Standard

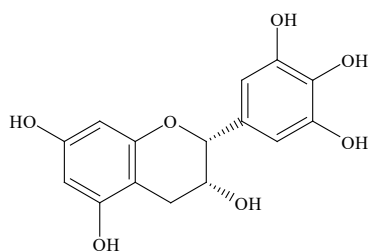
### Analyte:

1. Gallocatechin (GC)  
2. Epigallocatechin (EGC)  
3. Catechin (C)  
4. Epigallocatechin gallate (EGCG)  
5. Epicatechin (EC)  
6. Gallocatechin gallate (GCG)  
7. Epigallocatechin-3-O-(4'' -O-methyl)gallate (EGCG4'' Me)  
8. Epigallocatechin-3-O-(3'' -O-methyl)gallate (EGCG3'' Me)  
9. Epicatechin gallate (ECG)  
10. Catechin gallate (CG)  
(10 mg/mL each)

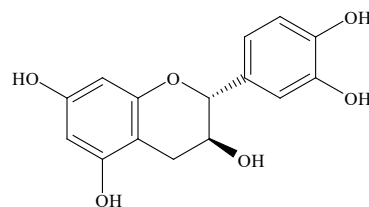
## Analysis of Catechins



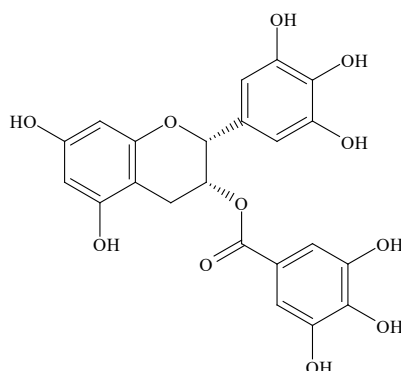
1. Galocatechin (GC)



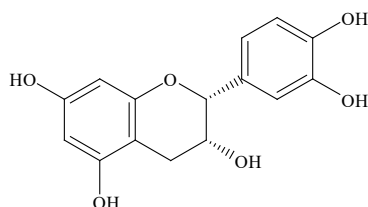
2. Epigallocatechin (EGC)



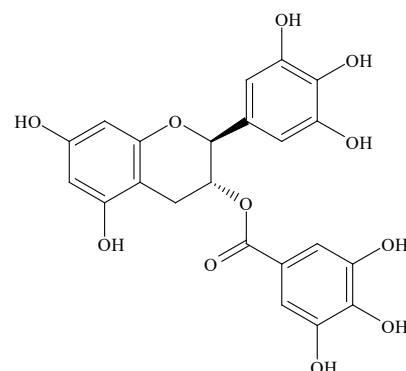
3. Catechin (C)



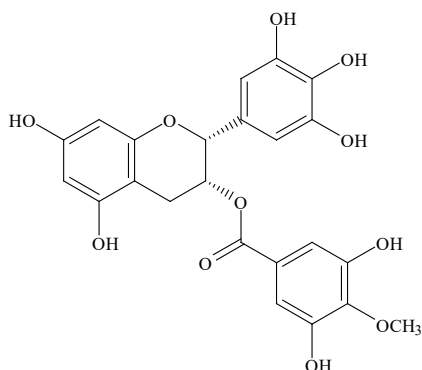
4. Epigallocatechin gallate (EGCG)



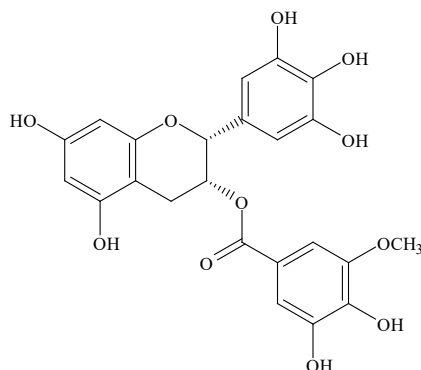
5. Epicatechin (EC)



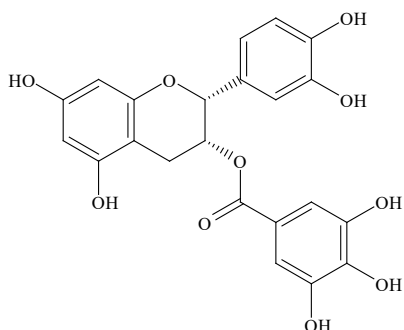
6. Galocatechin gallate (GCG)



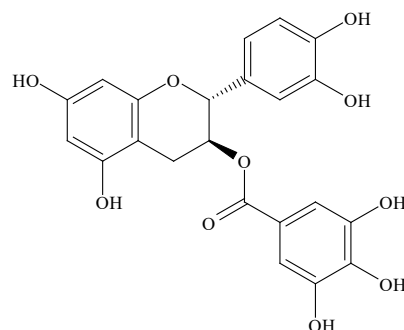
7. Epigallocatechin-3-O-(4''-O-methyl)gallate (EGCG4'' Me)



8. Epigallocatechin-3-O-(3''-O-methyl)gallate (EGCG3'' Me)



9. Epicatechin gallate (ECG)



10. Catechin gallate (CG)