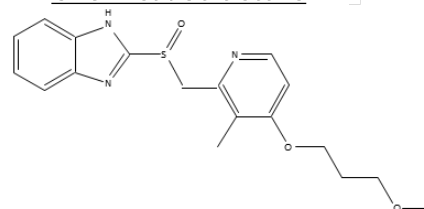


Rabeprazole is a type of proton pump inhibitors. It reduces gastric acid production and is used as an antiulcer drug.

In general, basic functional groups often cause peak tailing in HPLC analysis. However, good peak shape was obtained by using InertSustain C18 because of its inertness although rabeprazole has several basic groups.

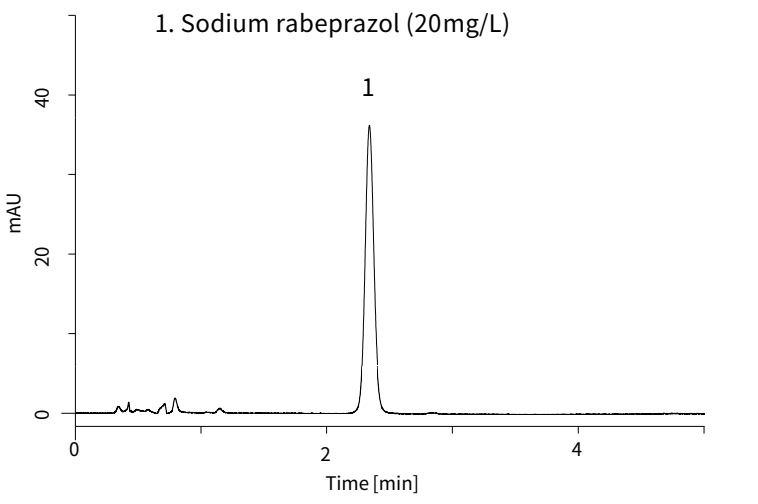
Chemical Structure



Structures are created using Chemistry 4-D Draw which is provided by ChemInnovation Software, Inc.

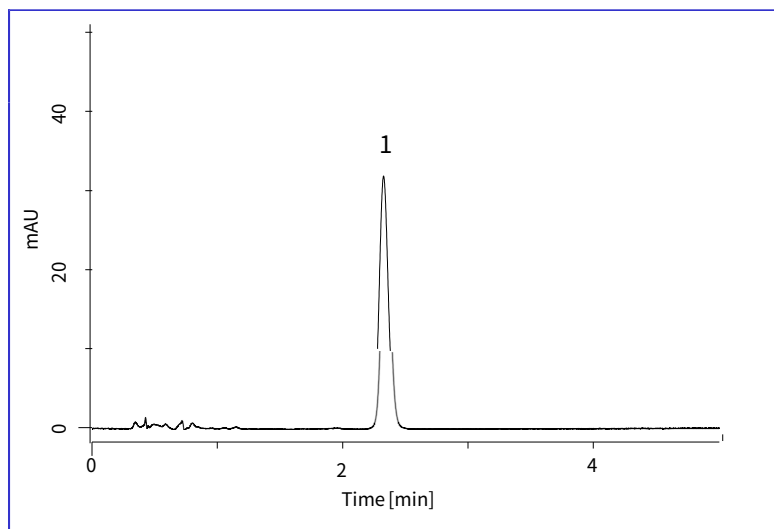
Standard Solution

1. Sodium rabeprazol (20mg/L)



Tablet Sample

The sample concentration was adjusted to 20 mg/L as rabeprazole sodium.



Conditions

Column	: InertSustain C18 HP (3 μm, 50 x 4.6 mm I.D.)
Column Cat. No. :	5020-14442
Eluent	: A) CH ₃ CN B) Buffer*
	A/B = 32/68, v/v
Flow rate	: 1.0 mL/min
Column temp.	: 30 °C
Detection	: UV 280 nm
Injection vol.	: 9 μL

* Buffer: Sodium dihydrogenphosphate (0.725 mg) and di- sodium hydrogen phosphate (4.472 g) was dissolved in 300 mL of purified water. The solution was made up to 1000 mL with purified water. After 4-fold dilution of this solution with purified water, its pH value was adjusted to 7.6 by adding phosphoric acid.

An example of pretreatment method for tablet sample

Sample

Grind tablet into powder
Weigh the powder equivalent to 20 mg of rabeprazole sodium.

Extraction

Add 80 mL of diluent** Sonication extraction for 5 min
Make up to 100 mL with diluent

Filtration

0.45 μm membrane filter

Dilution

10-fold dilution with diluent

HPLC

GL Sciences disclaims any and all responsibility for any injury or damage which may be caused by this data directly or indirectly. We reserve the right to amend this information or data at any time and without any prior announcement.

GL Sciences Inc. Japan

22-1 Nishishinjuku 6-chome
Shinjuku-ku, Tokyo
163-1130, Japan

Phone: +81-3-5323-6620
Fax: +81-3-5323-6621
Email: world@glsc.co.jp
Web: www.glsciences.com

GL Sciences Inc. USA

4733 Torrance Blvd. Suite 255
Torrance, CA 90503
USA

Phone: +1-310-265-4424
Fax: +1-310-265-4425
Email: info@glsciencesinc.com
Web: www.glsciencesinc.com

GL Sciences B.V.

Dillenburgstraat 7C
5652AM, Eindhoven
The Netherlands

Phone: +31-40-254-9531
Email: info@glsciences.eu
Web: www.glsciences.eu

GL Sciences (Shanghai) Limited

Tower B, Room 2003
Far East International Plaza
No.317 Xianxia Road, Changning District
Shanghai, China 200051

Phone: +86-21-62782272
Email: contact@glsciences.com.cn
Web: www.glsciences.com.cn



International Distributors

Visit our Website at www.glsciences.com/distributors