

Analysis of Synthetic Sweeteners in Foods -Acesulfame Potassium, Saccharin Sodium, Aspartame-

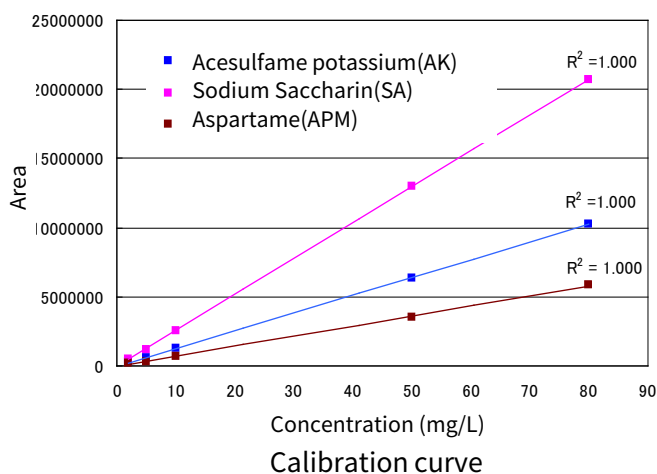
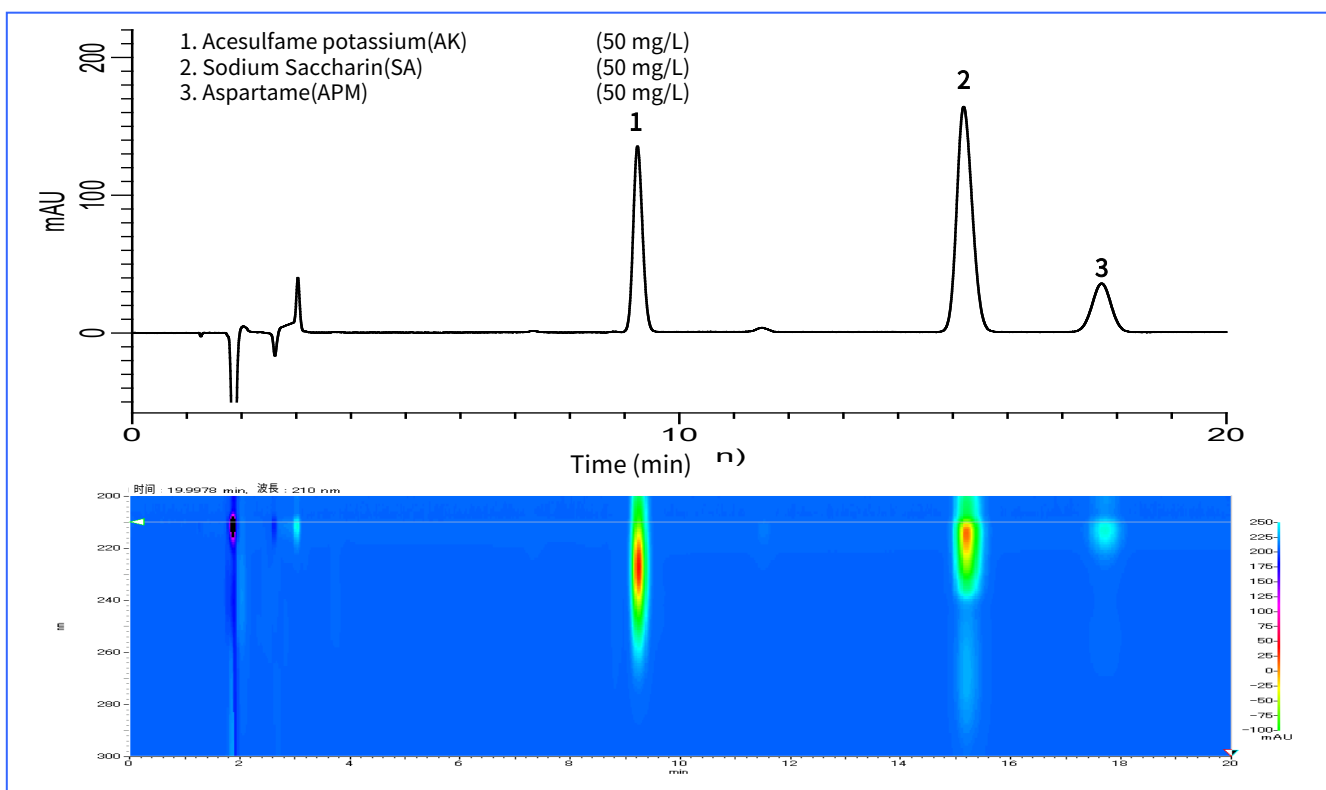
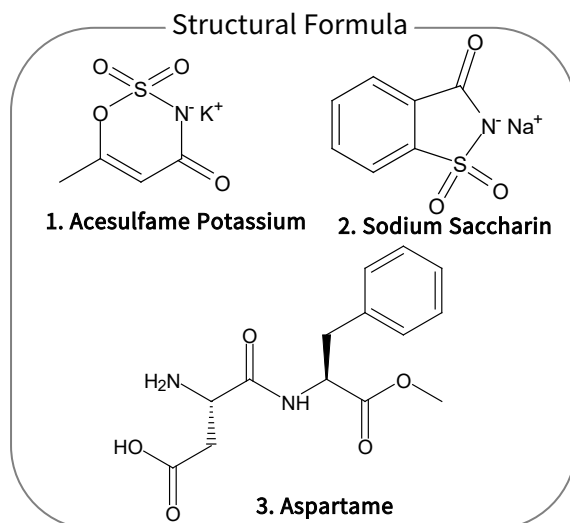
This application describes the analysis of the synthetic sweeteners, acesulfame potassium, saccharin, and aspartame.

These synthetic sweeteners have a level of sweetness several hundred times that of sugar and are used in beverages and foods.

In the Hygiene Test Method 2005, InertSil ODS-2 was introduced as an analytical column, but excellent results were obtained with an InertSil ODS-4.

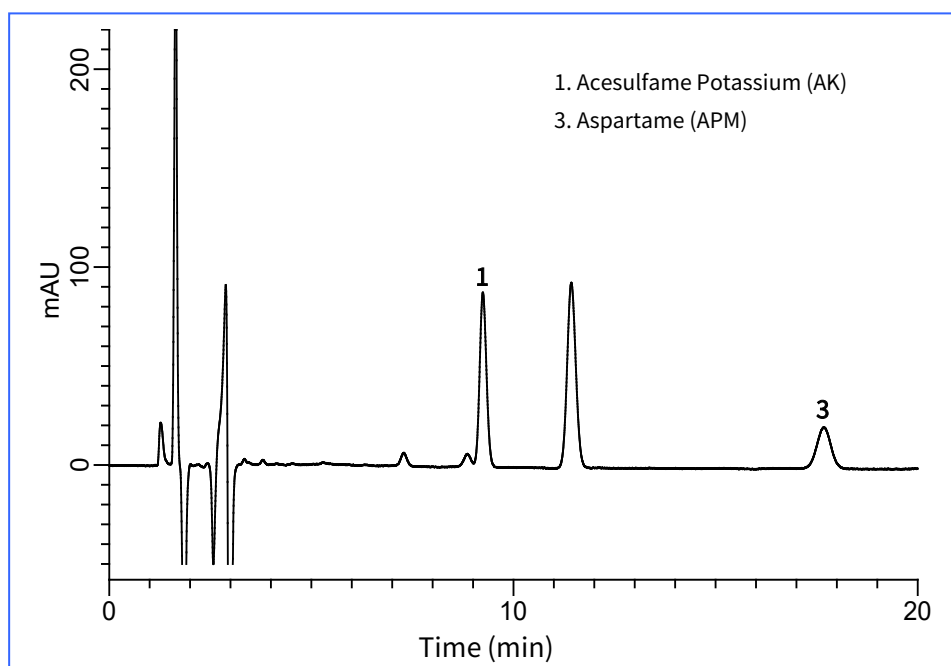
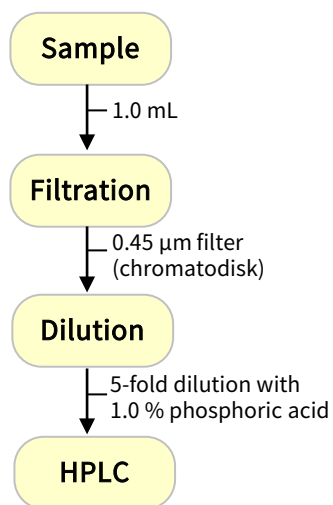
(K. Kanno)

Example: Measurement of standards



Examples of analysis of commercial beverages

Noncaloric carbonated drinks available on the market



GL Sciences disclaims any and all responsibility for any injury or damage which may be caused by this data directly or indirectly. We reserve the right to amend this information or data at any time and without any prior announcement.

GL Sciences Inc. Japan

22-1 Nishishinjuku 6-chome
Shinjuku-ku, Tokyo
163-1130, Japan

Phone: +81-3-5323-6620
Fax: +81-3-5323-6621
Email: world@glsc.co.jp
Web: www.glsciences.com

GL Sciences Inc. USA

4733 Torrance Blvd. Suite 255
Torrance, CA 90503
USA

Phone: +1-310-265-4424
Fax: +1-310-265-4425
Email: info@glsciencesinc.com
Web: www.glsciencesinc.com

GL Sciences B.V.

Dillenburgstraat 7C
5652AM, Eindhoven
The Netherlands

Phone: +31-40-254-9531
Email: info@glsciences.eu
Web: www.glsciences.eu

GL Sciences (Shanghai) Limited

Tower B, Room 2003
Far East International Plaza
No.317 Xianxia Road, Changning District
Shanghai, China 200051

Phone: +86-21-62782272
Email: contact@glsciences.com.cn
Web: www.glsciences.com.cn



International Distributors

Visit our Website at www.glsciences.com/distributors