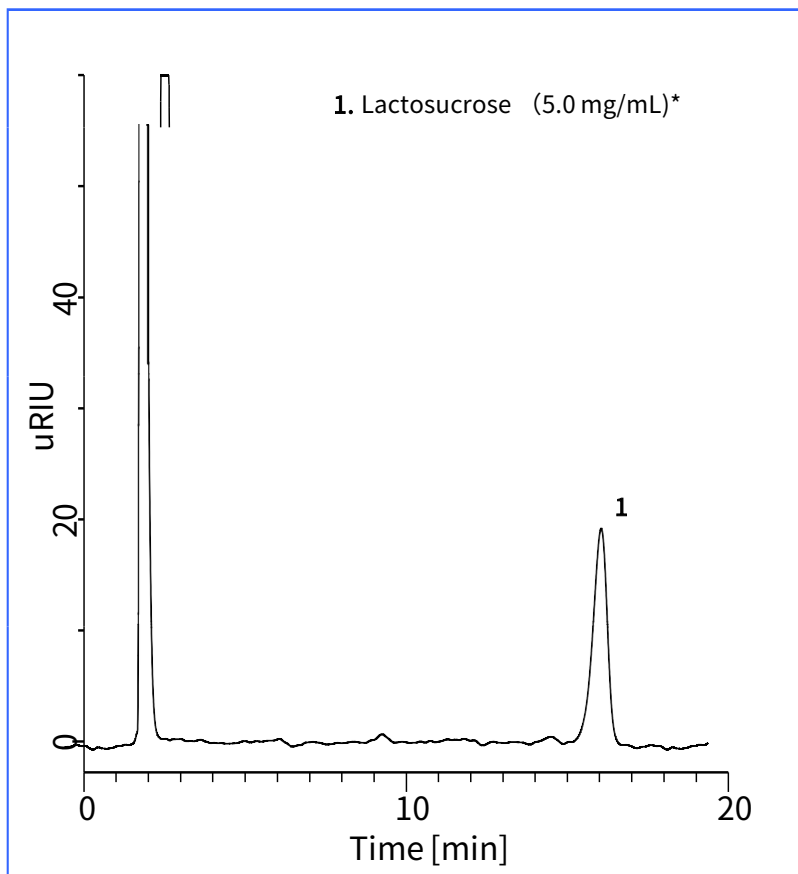


Lactosucrose has a sweet taste similar to sugar and regulates the functions of the intestines. In Japan, food products that contain appropriate amount of lactosucrose can be approved and labeled as foods for specified health uses (FOSHU). In the standard regulation system of FOSHU, HPLC method using silica gel chemically bonded with carbamoyl groups is described as the determination method for lactosucrose.

In this note, Inertsil Amide was used as a separation column for the analysis. Concentration of lactosucrose in commercially available beverage was successfully determined.

(K. Kanno)

### A Chromatogram Obtained from Standard Solution

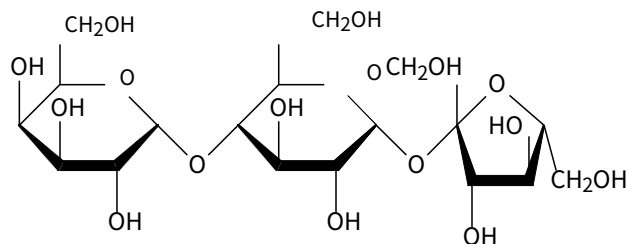


#### HPLC conditions

<b>Column</b>	: Inertsil Amide (5 $\mu$ m, 250 x 4.6 mm I.D.)
<b>Eluent</b>	: A) CH <sub>3</sub> CN B) H <sub>2</sub> O A/B = 71/29, v/v
<b>Flow rate</b>	: 1.2 mL/min
<b>Col. Temp.</b>	: 35 °C
<b>Detected</b>	: RI
<b>Inj. Vol.</b>	: 20 $\mu$ L

\* Aqueous solution of lactosucrose (10 mg/mL) was 2-fold diluted with acetonitrile.

#### Chemical Structure



Structures are created using Chemistry 4-D Draw which is provided by ChemInnovation Software, Inc.

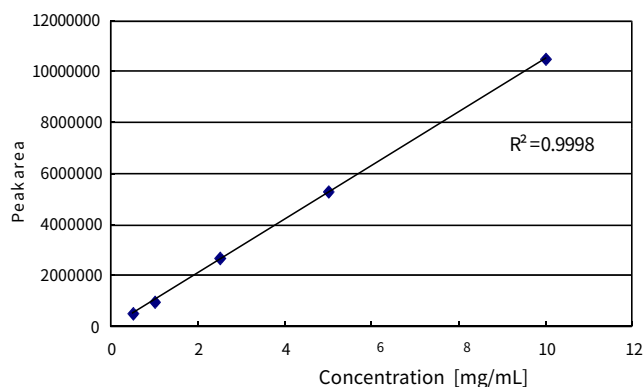
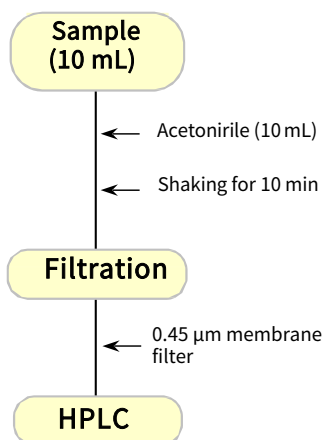
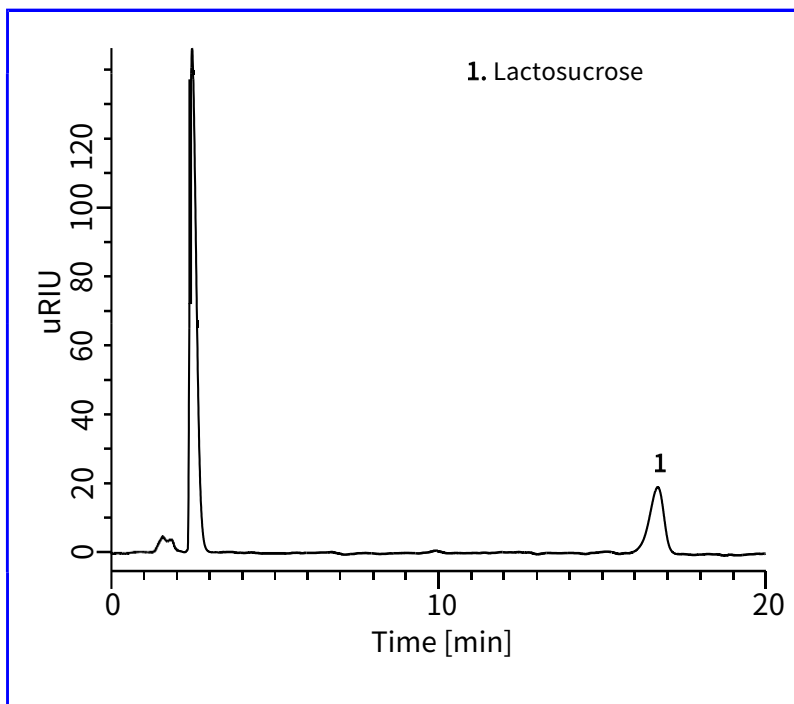


Figure 1. Calibration curve for lactosucrose

**An Example of Pretreatment  
(for liquid sample)**



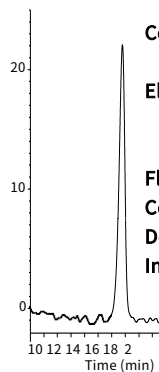
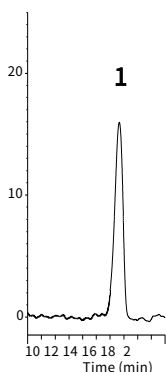
**A Chromatogram Obtained from a Beverage Containing Lactosucrose**



A know-how for using amide column ③

(A) water 100 % (B) water/acetonitrile = 50/50

When using amide column, it is preferable that sample is dissolved in acetonitrile. In general, peak shape is improved as acetonitrile concentration of sample solvent is increased. Chromatograms shown right are obtained from lactosucrose solution dissolved in water 100% (A) or water/acetonitrile = 50/50 (B).



**1**

**Column** : Inertsil Amide  
(5μm, 250 x 4.6 mm I.D.)

**Eluent** : A) CH<sub>3</sub>CN  
B) H<sub>2</sub>O  
A/B = 71/29, v/v

**Flow rate** : 1.2mL/min

**Col. Temp.** : 35 °C

**Detected** : RI

**Inj. Vol.** : 20 μL

GL Sciences disclaims any and all responsibility for any injury or damage which may be caused by this data directly or indirectly. We reserve the right to amend this information or data at any time and without any prior announcement.

**GL Sciences Inc. Japan**

22-1 Nishishinjuku 6-chome  
Shinjuku-ku, Tokyo  
163-1130, Japan

Phone: +81-3-5323-6620  
Fax: +81-3-5323-6621  
Email: [world@glsc.co.jp](mailto:world@glsc.co.jp)  
Web: [www.glsciences.com](http://www.glsciences.com)

**GL Sciences Inc. USA**

4733 Torrance Blvd. Suite 255  
Torrance, CA 90503  
USA

Phone: +1-310-265-4424  
Fax: +1-310-265-4425  
Email: [info@glsciencesinc.com](mailto:info@glsciencesinc.com)  
Web: [www.glsciencesinc.com](http://www.glsciencesinc.com)

**GL Sciences B.V.**

Dillenburgstraat 7C  
5652AM, Eindhoven  
The Netherlands

Phone: +31-40-254-9531  
Email: [info@glsciences.eu](mailto:info@glsciences.eu)  
Web: [www.glsciences.eu](http://www.glsciences.eu)

**GL Sciences (Shanghai) Limited**

Tower B, Room 2003  
Far East International Plaza  
No.317 Xianxia Road, Changning District  
Shanghai, China 200051

Phone: +86-21-62782272  
Email: [contact@glsciences.com.cn](mailto:contact@glsciences.com.cn)  
Web: [www.glsciences.com.cn](http://www.glsciences.com.cn)



**International Distributors**

Visit our Website at [www.glsciences.com/distributors](http://www.glsciences.com/distributors)